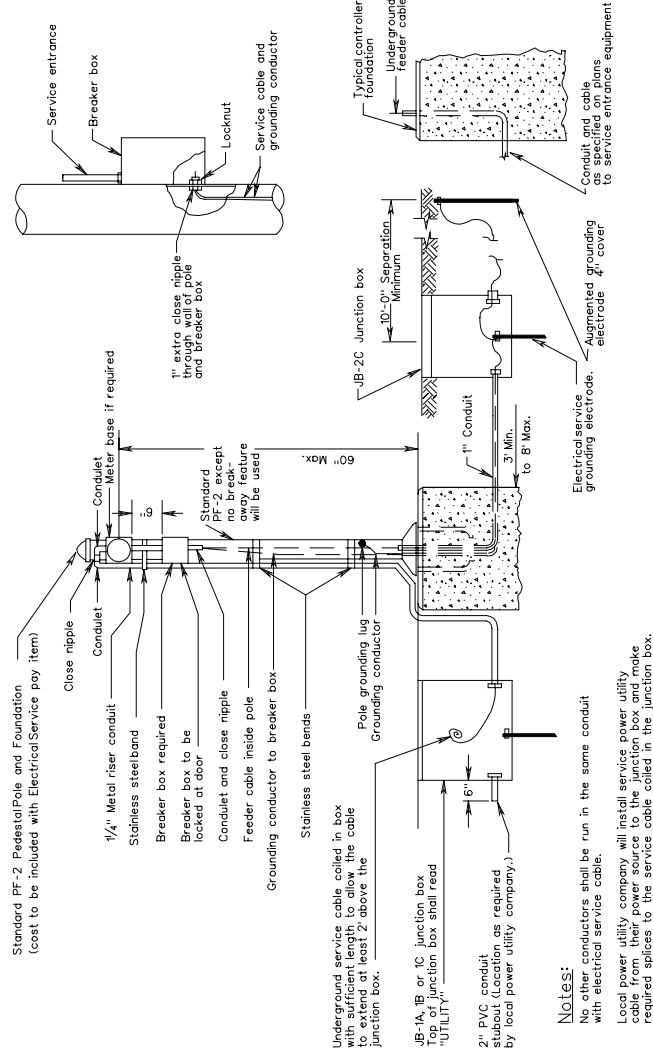


| | | | |
|-----------|------------|----|------|
| PLAN NO. | DATE | BY | CHK. |
| NOTE BOOK | 10/20/2023 | WJ | WJ |
| NO. | 1 | | |

SUPERVISED BY: _____
 DESIGNED BY: _____
 CHECKED BY: _____
 REVISED BY: _____

SE-5

ALTERNATE METHOD OF SERVICE CABLE AND GROUNDING CONDUCTOR ENTERING BREAKER BOX



NOTES:

No other conductors shall be run in the same conduit with electrical service cable.
 Local power utility company will install service power utility cable from their power source to the junction box and make required splices to the service cable coiled in the junction box.

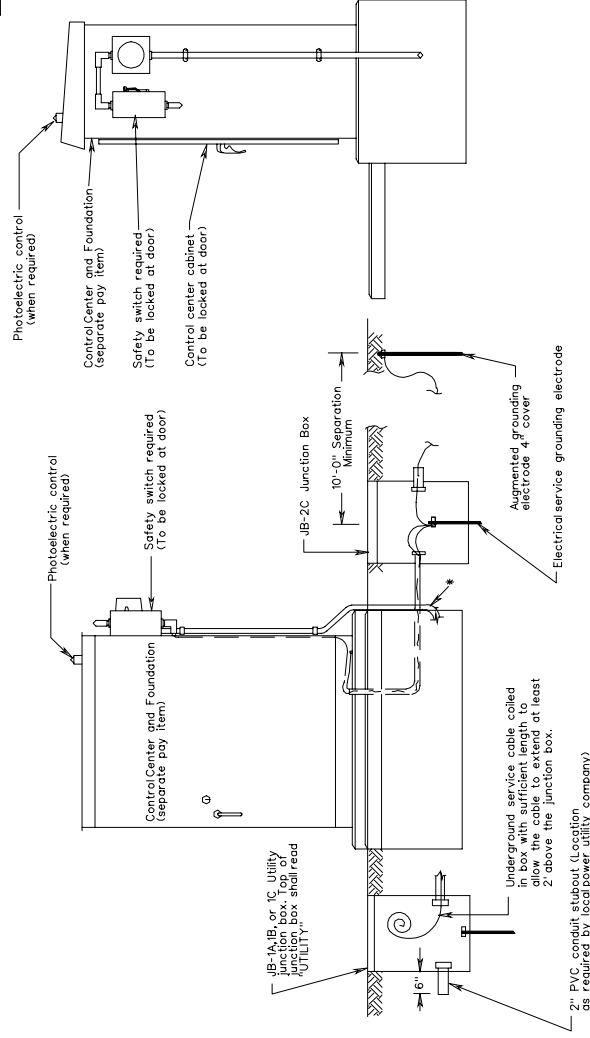
PEDESTAL POLE WITH GROUND MOUNTED CABINET

ELECTRICAL SERVICE DETAILS SIGNAL INSTALLATION

REV. 2/06
 1301.36

VIRGINIA DEPARTMENT OF TRANSPORTATION

SE-6



Notes:

* The conduit and service cable shall extend from the cabinet to the utility junction box.
 The control center cabinet at the inside and outside foundation joints shall be sealed with a silicone sealant.
 For alternate method of service cable entering safety switch see Standard SE-5.
 When 200 amp or greater service is required, service shall enter meter base at right bottom.
 No other conductors shall be run in the same conduit with electrical service cable.
 Local power utility company will install service power utility cable from their power source to the junction box and make required splices to the service cable coiled in the junction box.
 This standard is applicable for all electrical services other than 480Y/277V. For 480Y/277V service, see Standard SE-9.

NEW 2/06
 SPECIAL DESIGN SECTION
 DRAWING NO. A - 175

DESIGN FEATURES RELATING TO CONSTRUCTION OR TO REGULATION AND CONTROL OF TRAFFIC MAY BE SUBJECT TO CHANGE AS DEEMED NECESSARY BY THE DEPARTMENT

| REVISED | FHWA REGION | STATE | FEDERAL AID PROJECT | ROUTE | STATE PROJECT | SHEET NO. |
|---------|-------------|-------|---------------------|-------|---------------|-----------|
| | 3 | VA. | | | | 1301.37 |

ELECTRICAL SERVICE DETAILS SIGN AND LIGHTING INSTALLATIONS

VIRGINIA DEPARTMENT OF TRANSPORTATION

REV. 2/06
 1301.37