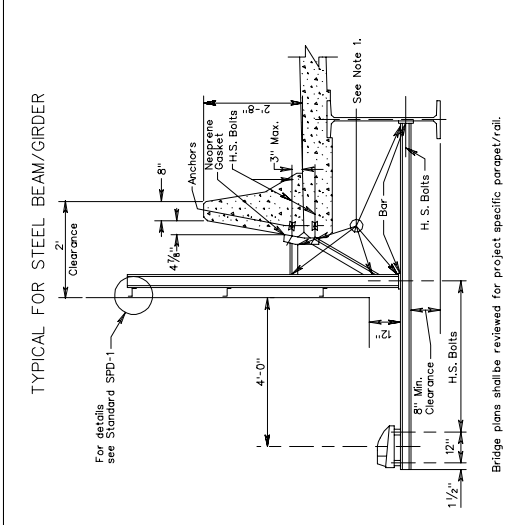
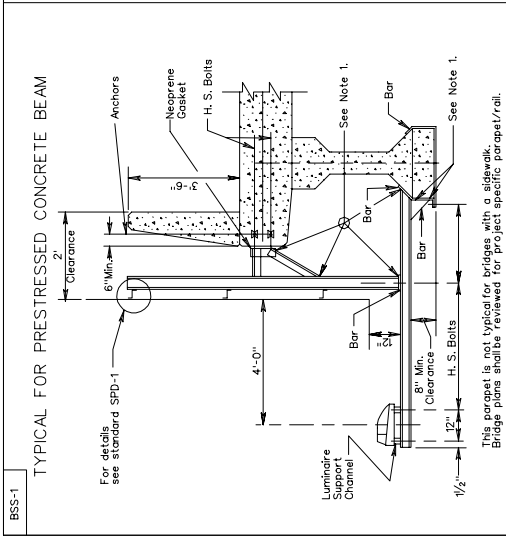


DESIGN FEATURES RELATING TO CONSTRUCTION OR TO REGULATION AND CONTROL OF TRAFFIC MAY BE SUBJECT TO CHANGE AS DEEMED NECESSARY BY THE DEPARTMENT

REVISED	STATE	FEDERAL AID PROJECT	ROUTE	STATE PROJECT	SHEET NO.
	VA.				



- NOTES:**
- The size of members and weld size(s) shall be designed by the contractor for the sign to be supported. Minimum size fillet weld shall be 1/4".
 - Minimum clearances are as specified by AASHTO or approved by the Virginia Department of Transportation.
 - For attachment to concrete superstructures or to painted or galvanized steel structures, attachments supporting and retaining steel superstructures, the supporting frames shall be with weathering steel.
 - The spacing of zeos and supports shall be as shown on the plans.
 - Sign supports shall be braced for lateral forces.
 - Bolts shall be High-Strength ASTM A325, galvanized except when attachment is to steel. Washers and nuts shall be galvanized steel. Washers shall be A325 Type 3.
 - Anchors shall be cast-in-place thru-bolting, may also be used for attachments to parapets. When cast-in-place anchors are used, they shall develop the strength of the bolts. When thru-bolting is used, anchorage on the traffic side of the parapet shall be flush with the parapet face.
 - Welds shall be placed on the high side of the parapet above top or deck slab. Adhesive anchors with epoxy or non-epoxy grout shall not be allowed.

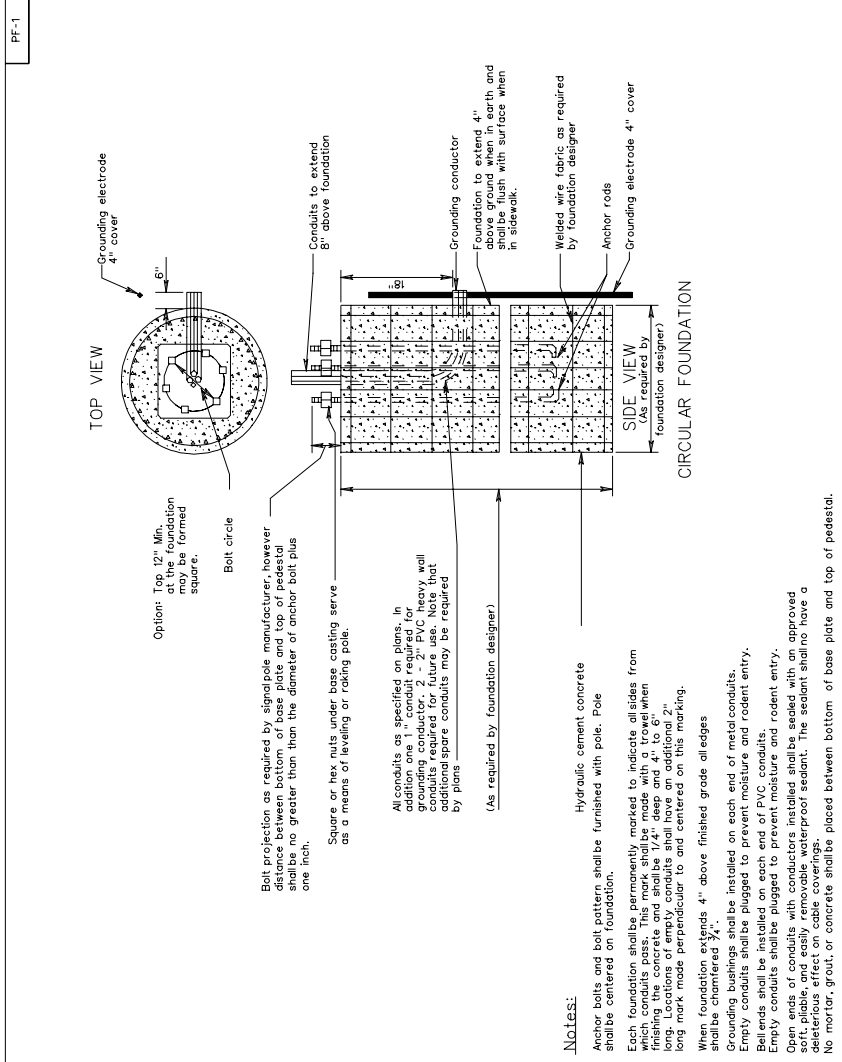
Bridge plans shall be reviewed for project specific parapet/rail.

7. When required by the plans bridge mounted sign structure luminaires shall be installed on a luminaire retrieval system with supports and electrical system designed for track mounted luminaires. Retrieval system including the electrical system shall be equal to "LUMI-TRAK" and designed for the number of luminaires as indicated on the plans. Spacing of hangers used to support the retrieval system shall be increased to a maximum 7-foot distance only, where hangers do not support sign panels. Turntable and retrieval system shall be designed to support the weight of the retrieval system and the outside paved shoulder (5.6') or shall extend five feet beyond the vertical edge (16') of outermost sign luminaire whichever is greater. The opposite end of retrieval system shall extend a minimum of 6 inches past the outermost vertical edge of the sign hanger arm. Luminaire support channels and associated equipment will not be required with the luminaire retrieval system.

TYPICAL BRIDGE PARAPET SIGN MOUNTING DETAILS

REV. 2/06
REV. 7/05
1301.78

VIRGINIA DEPARTMENT OF TRANSPORTATION



REV. 2/06
SPECIAL DESIGN SECTION
DRAWING NO. A - 167

PLAN NO.	PROJECT	FILE NO.	SHEET NO.

SIGNAL POLE FOUNDATION INSTALLATION DETAILS

REV. 7/05
1301.11

VIRGINIA DEPARTMENT OF TRANSPORTATION