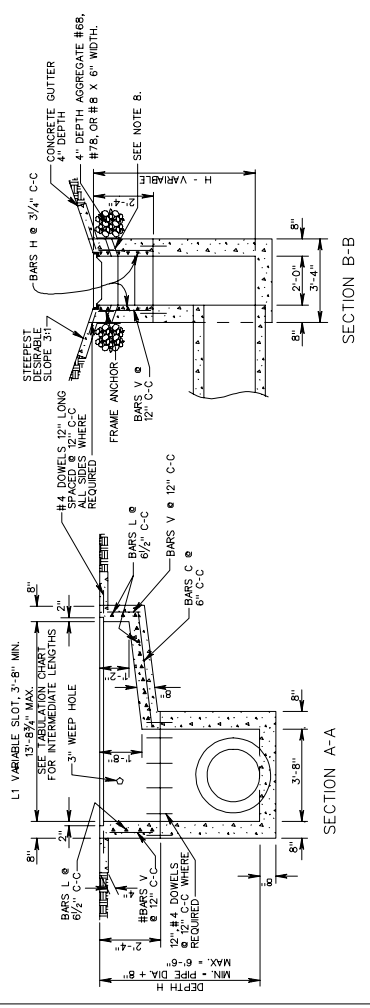
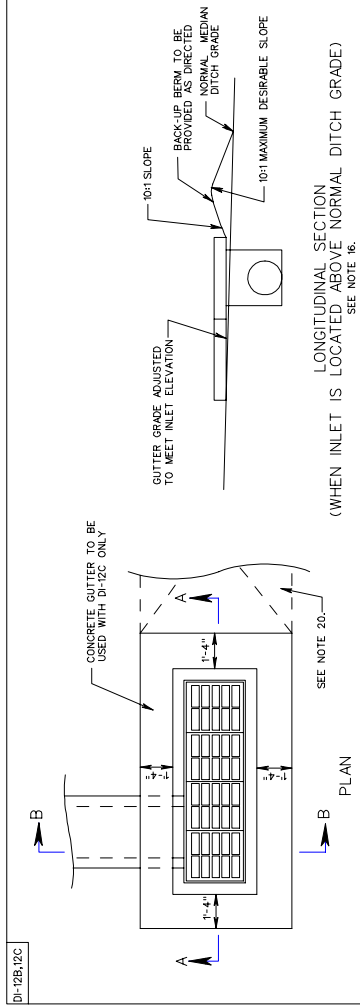


SURVEYED BY _____
 SUPERVISED BY AAA _____
 DESIGNED BY BBB _____

DESIGN FEATURES RELATING TO CONSTRUCTION OR TO REGULATION AND CONTROL OF TRAFFIC MAY BE SUBJECT TO CHANGE AS DEEMED NECESSARY BY THE DEPARTMENT

REVISED	STATE	FEDERAL AID		STATE		SHEET NO.
		PROJECT	ROUTE	PROJECT	PROJECT	
	VA.					



SHEET 1 OF 2
 MULTIGRATE DROP INLET
 FOR PIPE SIZES 12" TO 36"
 VIRGINIA DEPARTMENT OF TRANSPORTATION
 SPECIFICATION REFERENCE
 241
 503

- NOTES
- DEPTH OF INLET (H) TO BE SHOWN ON PLANS. FOR DEPTH GREATER THAN 6'-0", USE SITS. DI-12, DI-12A.
 - ALL REINFORCING BARS TO BE #4.
 - CONCRETE GUTTERS SHALL BE CAST IN PLACE. ADDITIONAL CURBS OR GRASSES AS CONCRETE. MEASURED FROM THE INVERT OF THE OUTFALL PIPE TO THE TOP OF THE STRUCTURE. ONLY FOR ESTIMATING PURPOSES AND THE ACTUAL QUANTITIES SHALL BE DETERMINED BY THE CONTRACTOR FROM FIELD CONDITIONS.
 - WHEN SPECIFIED ON THE PLANS THE INSET IS TO BE SHAPED IN ACCORDANCE WITH STANDARD PRACTICES FOR THE INVERT OF THE INLET. THE COST OF FINISHING AND PLACING SHALL BE INCLUDED IN THE BID PRICE FOR THE STRUCTURE.
 - IN THE EVENT THE INVERT OF THE OUTFALL PIPE IS HIGHER THAN THE BOTTOM OF THE INLET, THE INLET SHALL BE SHAPED WITH A 3" RADIUS TO THE BOTTOM OF THE INLET. THE COST OF FINISHING AND PLACING SHALL BE INCLUDED IN THE BID PRICE FOR THE STRUCTURE.
 - ALL REINFORCING STEEL SHALL HAVE A MIN. COVER OF 2".
 - ALL OPENINGS BY 2".
 - CAST-IN PLACE CONCRETE IS TO BE CLASS A3 (3000 PSI). PRECAST CONCRETE IS TO BE 4000 PSI.
- DI-12B,12C

TABULATION CHARTS

APPROXIMATE QUANTITIES DI-12B ONLY
 (SEE NOTES B & Z AND 23.)

I (SEE NOTE 23)	L1	CONCRETE CU. YDS.	REINFORCING BARS LBS.	NUMBER GRADES	NUMBER CONCRETE CHAMBER INCREMENTS PER FOOT CU. YDS.
6	5'-8 1/2"	1.28	122.81	3	
8	7'-8"	1.48	161.90	4	
10	9'-8 1/2"	1.79	203.37	5	.35
12	11'-8"	2.09	242.45	6	
14	13'-8 1/2"	2.40	283.93	7	

GRATE DIMENSIONS

GRATE TYPE	OPENING WIDTH (1)	OPENING THICKNESS (2)	END SECTION WIDTH (3)	GRATE THICKNESS (4)
TYPE I	3 1/4"	1 1/8"	2 1/8"	3 3/4"
TYPE II	8 OPENINGS	7 BARS	2 1/8"	3 3/4"

NOTE: SEE GRATE DIMENSION TABLE FOR GRATE TYPE I & II DIMENSIONS

REV. 2/06
 104.33
 MULTIGRATE DROP INLET
 FOR PIPE SIZES 12" TO 36"
 VIRGINIA DEPARTMENT OF TRANSPORTATION
 SPECIFICATION REFERENCE
 241
 503
 REV. 2/06
 104.34