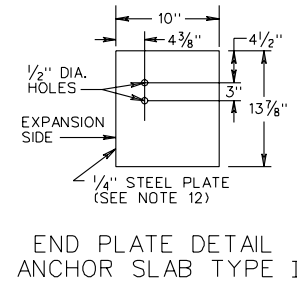
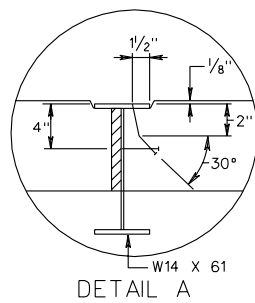
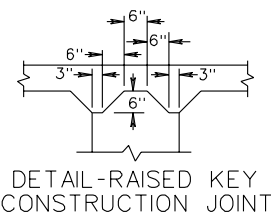
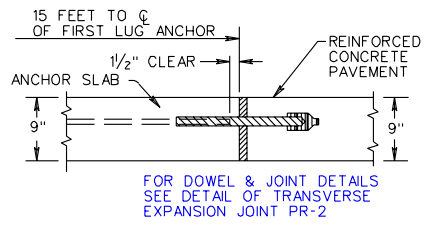
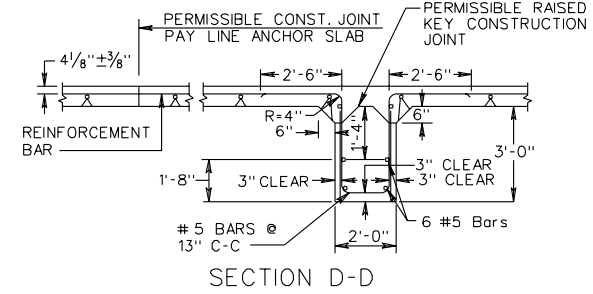
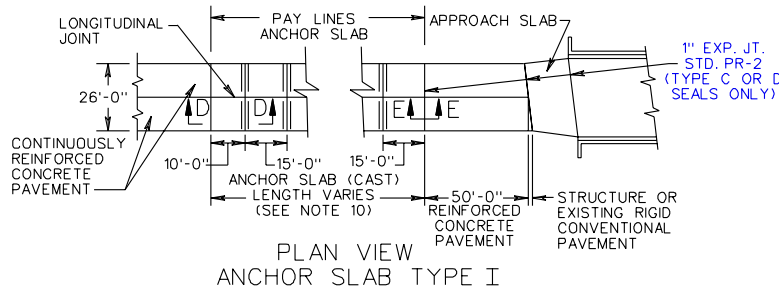


REVISED ON 1-04

PR-5

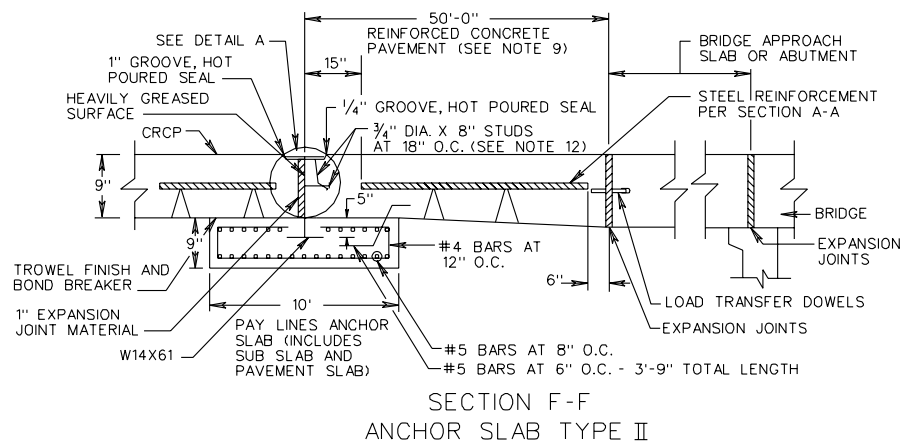
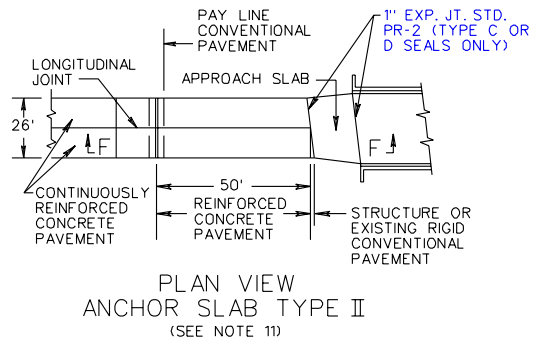


SECTION E-E  
ANCHOR SLAB TYPE I

DETAIL-RAISED KEY  
CONSTRUCTION JOINT

DETAIL A

END PLATE DETAIL  
ANCHOR SLAB TYPE II



SHEET 2 OF 3

SEE SHEET 3 OF 3 FOR NOTES.

9" THICK CONTINUOUSLY REINFORCED CONCRETE PAVEMENT  
14 FOOT TRAVEL LANE

REV. 7/03  
301.14

VIRGINIA DEPARTMENT OF TRANSPORTATION

SPECIFICATION REFERENCE
316