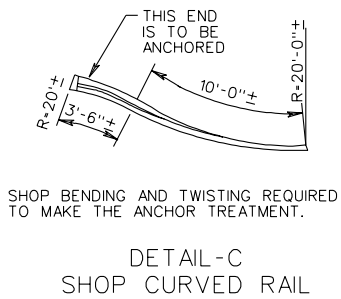
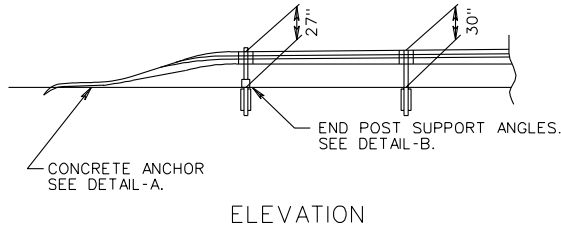
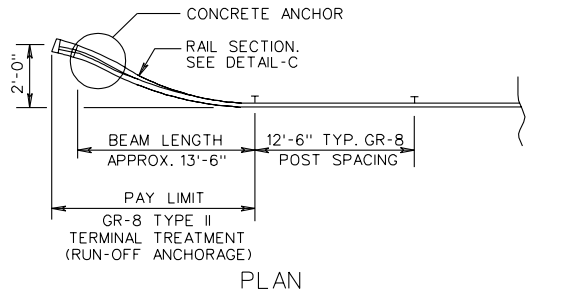


REVISED ON 7-01

REVISED ON 1-04

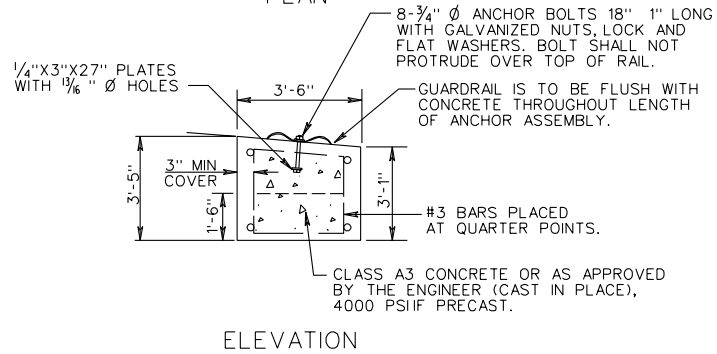
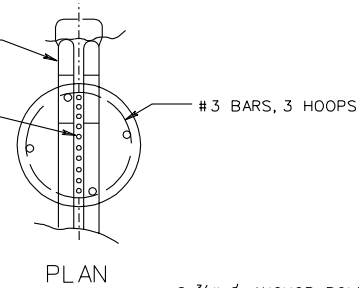
GR-8,8A,8B,8C



SHOP BENDING AND TWISTING REQUIRED TO MAKE THE ANCHOR TREATMENT.

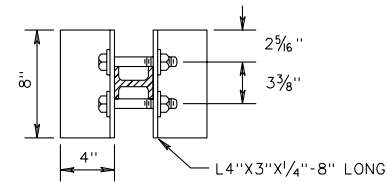
W BEAM END SECTION (FLARED). FOR DETAILS SEE SHEET NO. 501.02

10-1" Ø HOLES AT 3" O.C. FOR 8-3/4" ANCHOR BOLTS (TWO SPARE HOLES IN RAIL FOR POSITIONING)



DETAIL-A
CONC. ANCHOR ASSEMBLY

1/8" Ø HOLES FOR 3/4" BOLTS 4 1/2" LONG WITH NUTS AND WASHERS. BOLTS TORQUED TO 100 + 20 FT. LBS. AFTER POST IS DRIVEN.



GR-8 TYPE II TERMINAL TREATMENT (RUN-OFF ANCHORAGE)

SHEET 2 OF 2

STANDARD W BEAM GUARDRAIL (WEAK POST SYSTEM)

VIRGINIA DEPARTMENT OF TRANSPORTATION

501.15

SPECIFICATION REFERENCE

221 505