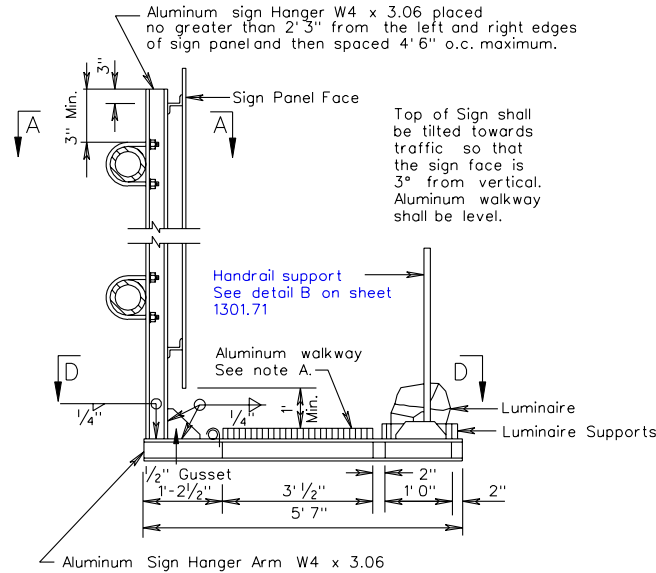
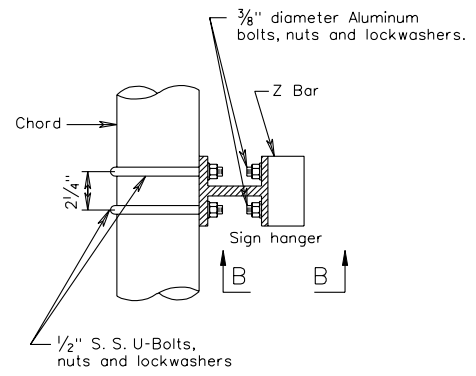


SIGN HANGER ERECTION DETAIL



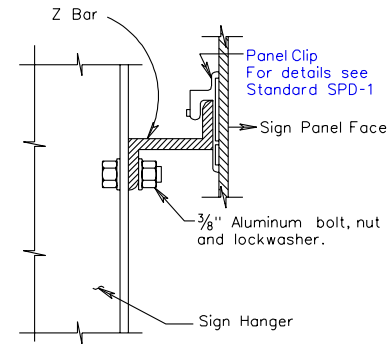
Note A  
Walkway, Handrail and Luminaires required only where indicated on the plans.

SECTION A-A



See Standard SSP-VIA for method of attaching alternate sign panel design to sign hanger.

SECTION B-B

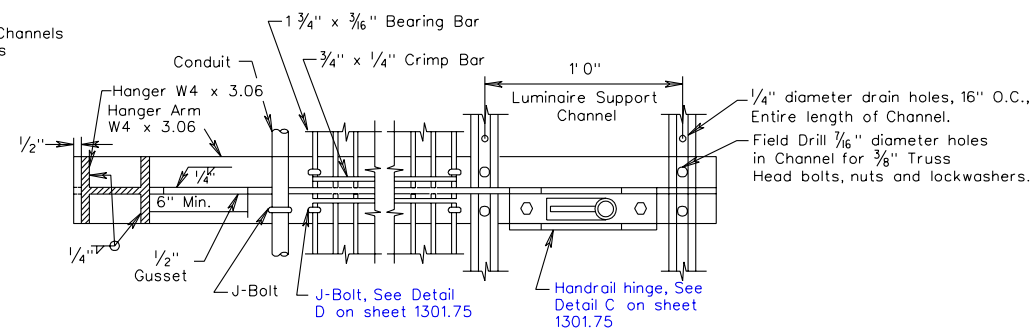


Note:

When required by the plans overhead sign structure luminaires shall be installed on a luminaire retrieval system with supports and electrical system designed for track mounted luminaires. Retrieval system including the electrical system shall be equal to "LUMI-TRAK" and designed for the number of luminaires indicated on the plans. Spacing of hangers used to support the retrieval system shall be increased to a maximum 7 foot distance only where the hangers do not support sign panels. Turntable end of retrieval system shall be of sufficient length to align with the vertical edge of the outside paved shoulder (± 6") or shall extend 5 feet beyond the vertical edge (± 6") of outermost sign luminaire whichever is greater. The opposite end of retrieval system shall extend a minimum of 6 inches past the outermost vertical edge of the sign hanger arm. Walkway, handrail, luminaire support channels and associated equipment will not be required with the luminaire retrieval system.

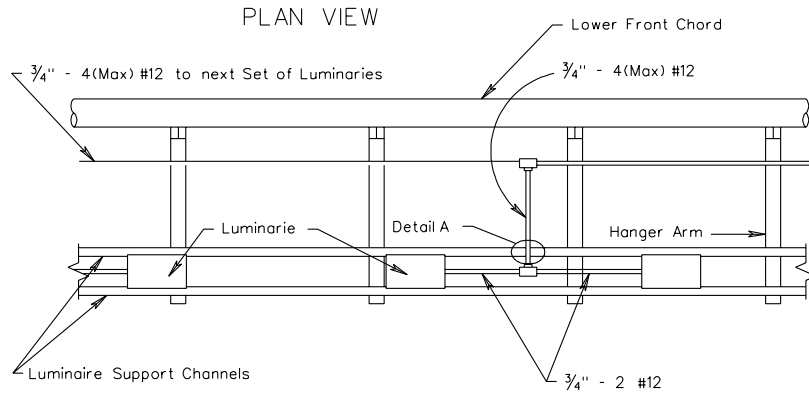
SECTION D-D

Luminaire to be attached to Channels with 3/8" galvanized cap screws and spring nuts.



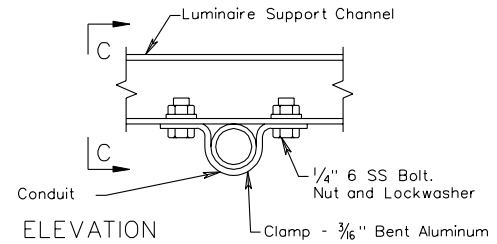
OSS-1

### ELECTRICAL INSTALLATION DOUBLE POLE END FRAMES

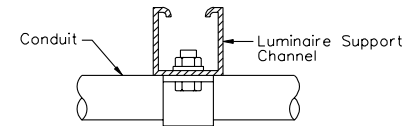


Walkway Grating, if required, is not shown.  
Installation for Single Pole Supports to be similar.

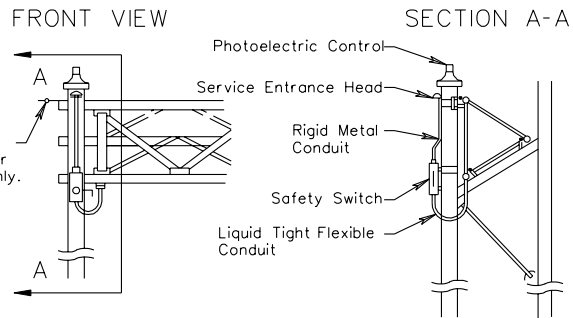
### DETAIL A



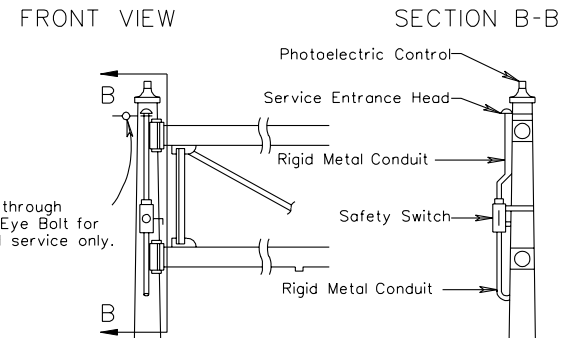
### SECTION A-A



### ELECTRIC DETAILS FOR SIGN LIGHTING SPAN SIGN STRUCTURE



### ELECTRIC DETAILS FOR SIGN LIGHTING CANTILEVER SIGN STRUCTURE



**Note:**

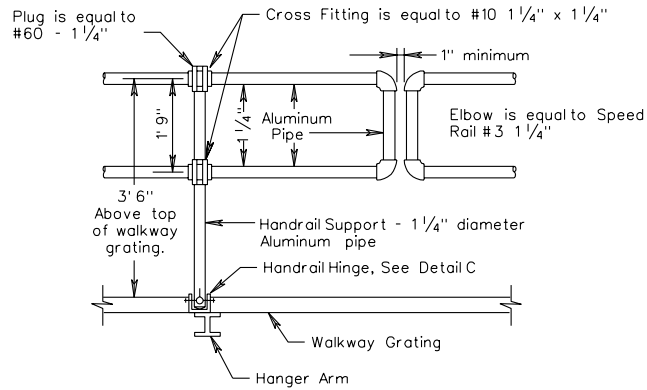
All conduit located in or on cantilever structure shall be  $\frac{3}{4}$ " minimum.

### TYPICAL DETAILS FOR OVERHEAD SIGN STRUCTURES

VIRGINIA DEPARTMENT OF TRANSPORTATION

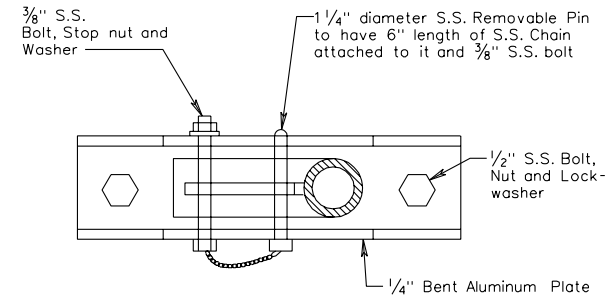
DETAIL B

HANDRAIL ELEVATION



DETAIL C

HANDRAIL HINGE

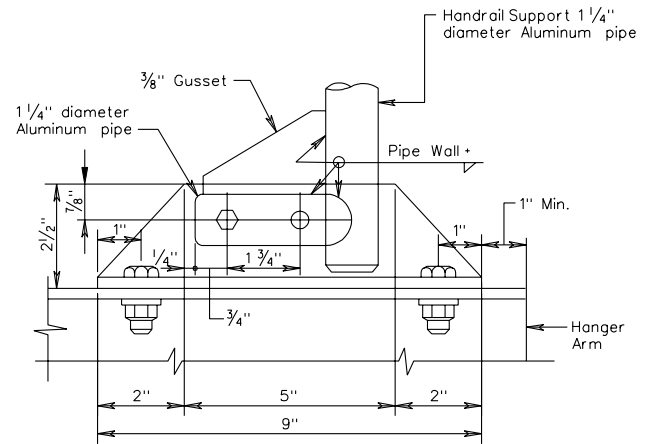
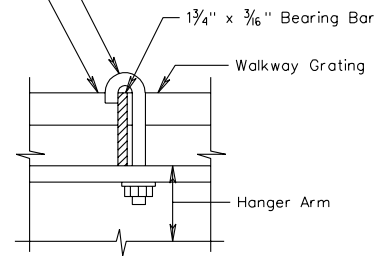


PLAN VIEW

DETAIL D

1/4" S.S. J-Bolt, Stop Nut and Washer

3/4" x 1/8" Crimp Bar



ELEVATION VIEW

TYPICAL DETAILS FOR OVERHEAD SIGN STRUCTURES