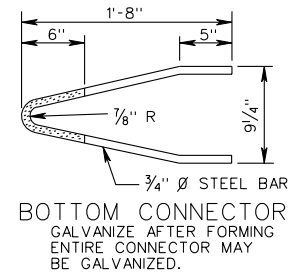
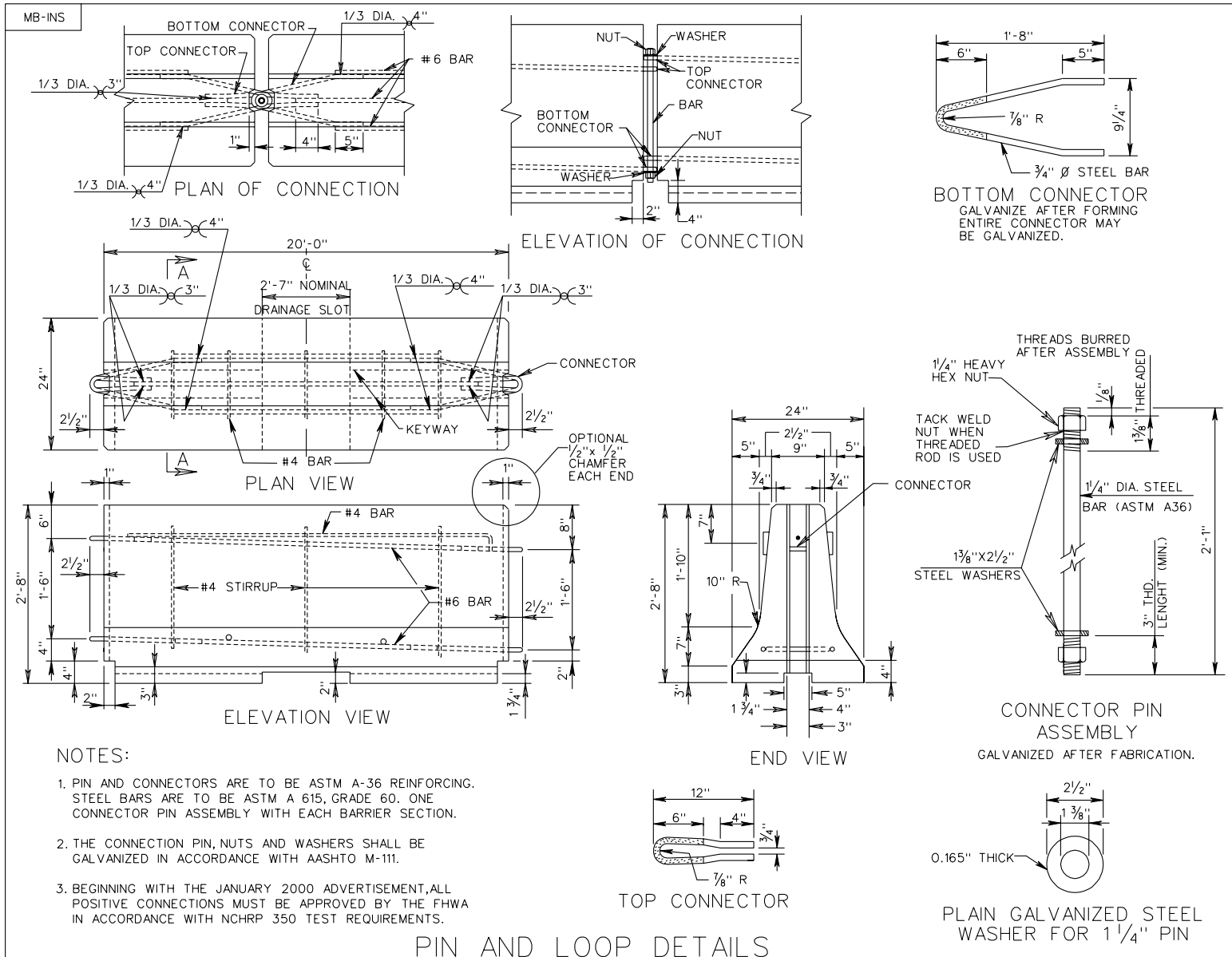


REVISED ON 7/05



- NOTES:
- PIN AND CONNECTORS ARE TO BE ASTM A-36 REINFORCING. STEEL BARS ARE TO BE ASTM A 615, GRADE 60. ONE CONNECTOR PIN ASSEMBLY WITH EACH BARRIER SECTION.
 - THE CONNECTION PIN, NUTS AND WASHERS SHALL BE GALVANIZED IN ACCORDANCE WITH AASHTO M-111.
 - BEGINNING WITH THE JANUARY 2000 ADVERTISEMENT, ALL POSITIVE CONNECTIONS MUST BE APPROVED BY THE FHWA IN ACCORDANCE WITH NCHRP 350 TEST REQUIREMENTS.

PIN AND LOOP DETAILS

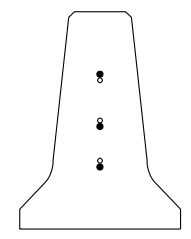
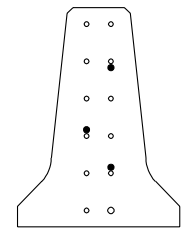
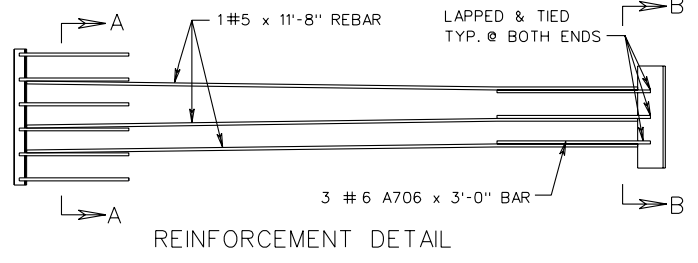
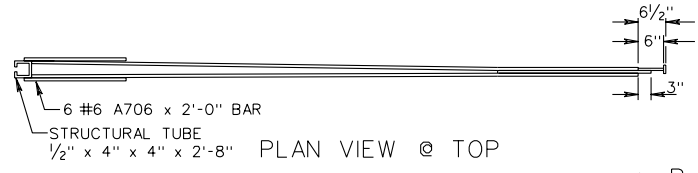
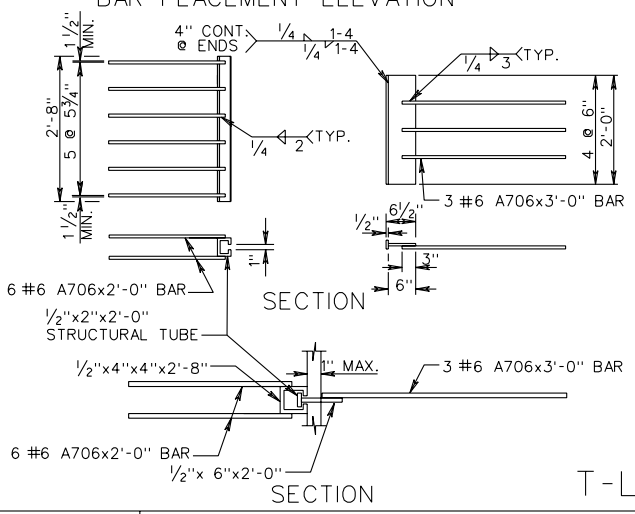
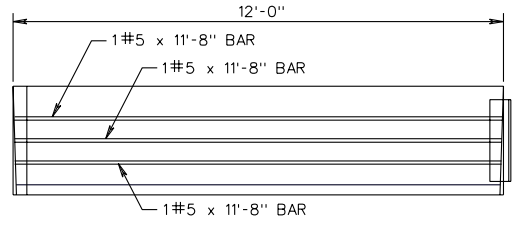
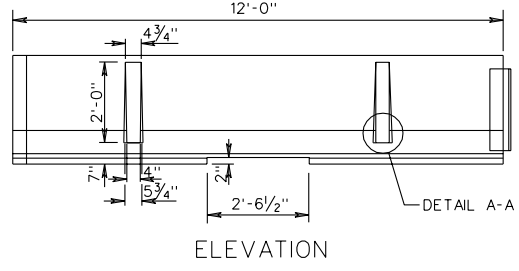
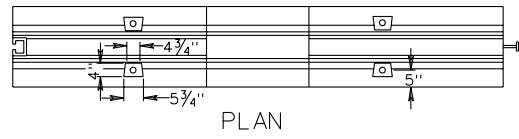
SHEET 1 OF 5

PRECAST CONCRETE MEDIAN BARRIER
 POSITIVE CONNECTION OPTIONS

VIRGINIA DEPARTMENT OF TRANSPORTATION

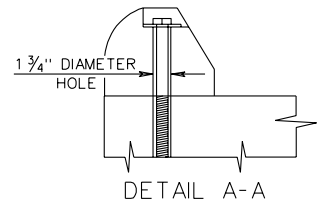
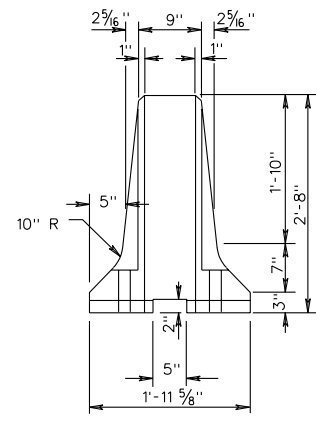
501.59

SPECIFICATION REFERENCE



LEGEND	
●	= 11'-8" BAR
○	= 2' AND 3' BAR

- NOTES:
- (1) MINIMUM COMPRESSIVE STRENGTH OF CONCRETE AT THE AGE OF 28 DAYS (FC) SHALL BE 4000 PSI.
 - (2) ALL REINFORCEMENT SHALL CONFORM TO ASTM A615, GRADE 60.
 - (3) STANDARD BARRIER SECTIONS SHALL BE 12'-0" AS SHOWN OR 18'-0" SHORTER SECTIONS SHALL BE CAST IN REQUIRED LENGTHS AS ONE UNIT. LONGER SECTIONS SHALL BE CAST TO REQUIRED DIMENSIONS IN TWO UNITS.
 - (4) ALL EXPOSED METAL IS TO BE GALVANIZED FOR PERMANENT LOCATIONS.
 - (5) ALL EXPOSED METAL MAY BE GALVANIZED FOR TEMPORARY LOCATIONS.
 - (6) T-LOK AS MANUFACTURED BY ROCKINGHAM PRECAST
 - (7) BEGINNING WITH JANUARY 2000 ADVERTISEMENT ALL POSITIVE CONNECTIONS MUST BE APPROVED BY THE FHWA IN ACCORDANCE WITH NCHRP 350 TEST REQUIREMENTS.

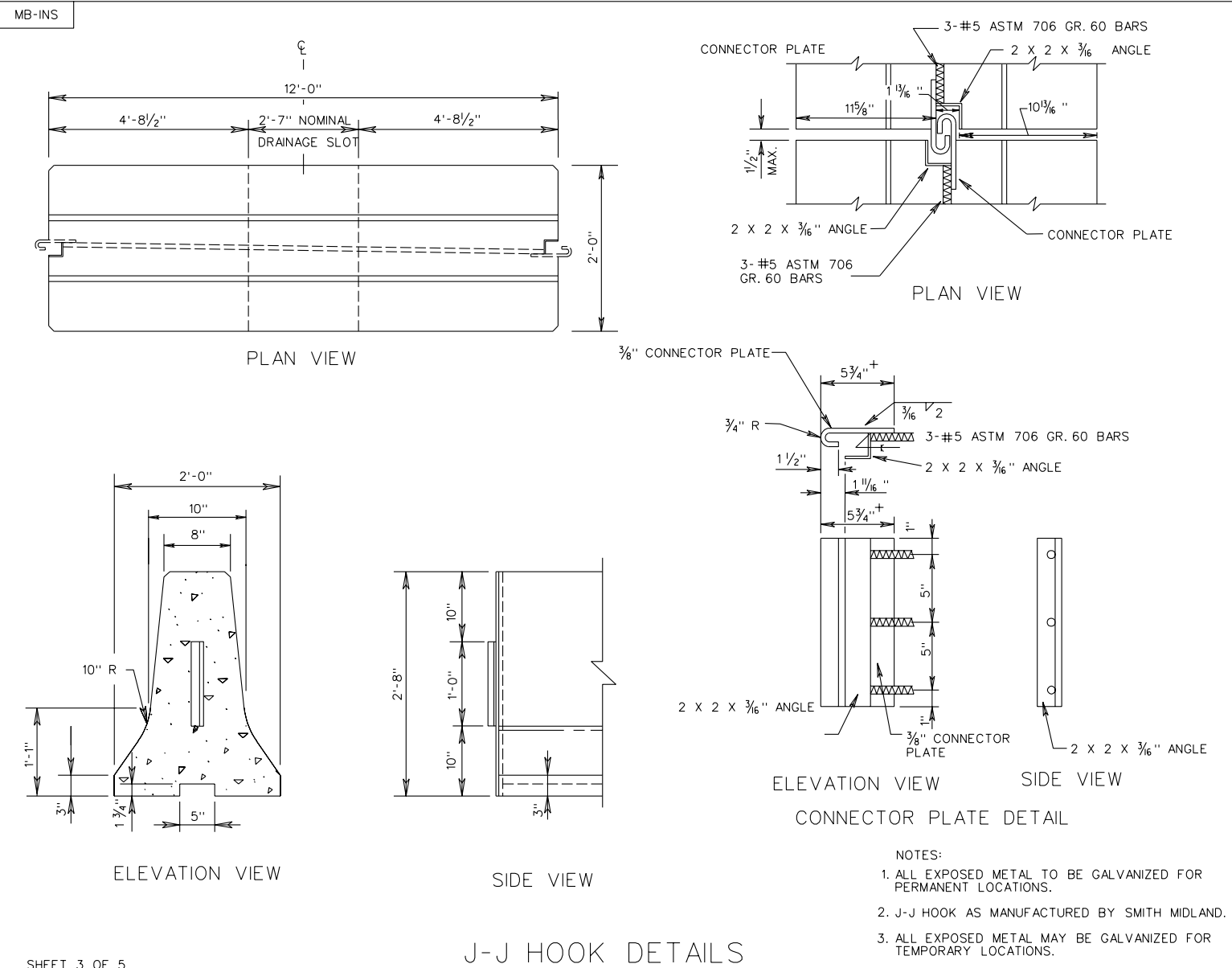


T-LOK[®] DETAILS

SPECIFICATION REFERENCE

PRECAST CONCRETE MEDIAN BARRIER
POSITIVE CONNECTION OPTIONS

REVISED ON 7/05



SHEET 3 OF 5

J-J HOOK DETAILS
 PRECAST CONCRETE MEDIAN BARRIER
 POSITIVE CONNECTION OPTIONS

501.61

VIRGINIA DEPARTMENT OF TRANSPORTATION

SPECIFICATION REFERENCE