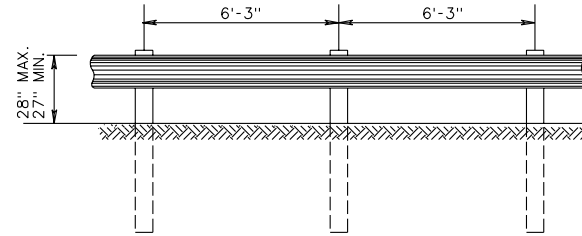
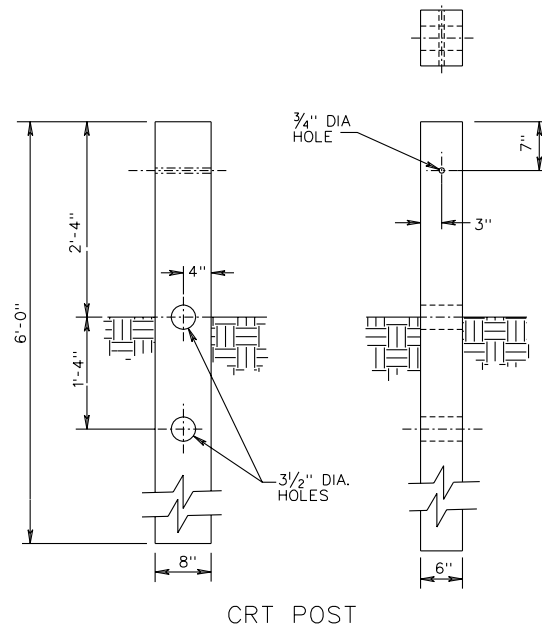


GR-2A
(3'-1/2" POST SPACING)



GR-2
(6'-3" POST SPACING)



CRT POST

NOTES:

GUARDRAIL LOCATIONS SHOWN ON PLANS ARE APPROXIMATE ONLY AND CAN BE ADJUSTED DURING CONSTRUCTION IF AND AS DIRECTED BY THE ENGINEER.

FOR DETAILS OF POST AND BLOCKOUTS SEE SHEET NO. 501.05.

FOR DETAILS OF RAIL ELEMENT, RAIL SPLICE JOINT, W-BEAM BACK-UP PLATE, AND ASSOCIATED HARDWARE SEE SHEET NOS. 501.01 AND 501.02.

THE MAXIMUM DYNAMIC DEFLECTION FOR STANDARD GR-2 IS 3 FEET, AND 2 FEET FOR GR-2A.

RAIL ELEMENTS ARE FURNISHED SHOP CURVED FOR RADII BETWEEN 5 FEET AND 150 FEET.

SPECIFICATION REFERENCE	STANDARD BLOCKED-OUT W BEAM GUARDRAIL (STRONG POST SYSTEM)
221 505	
VIRGINIA DEPARTMENT OF TRANSPORTATION	
501.04	