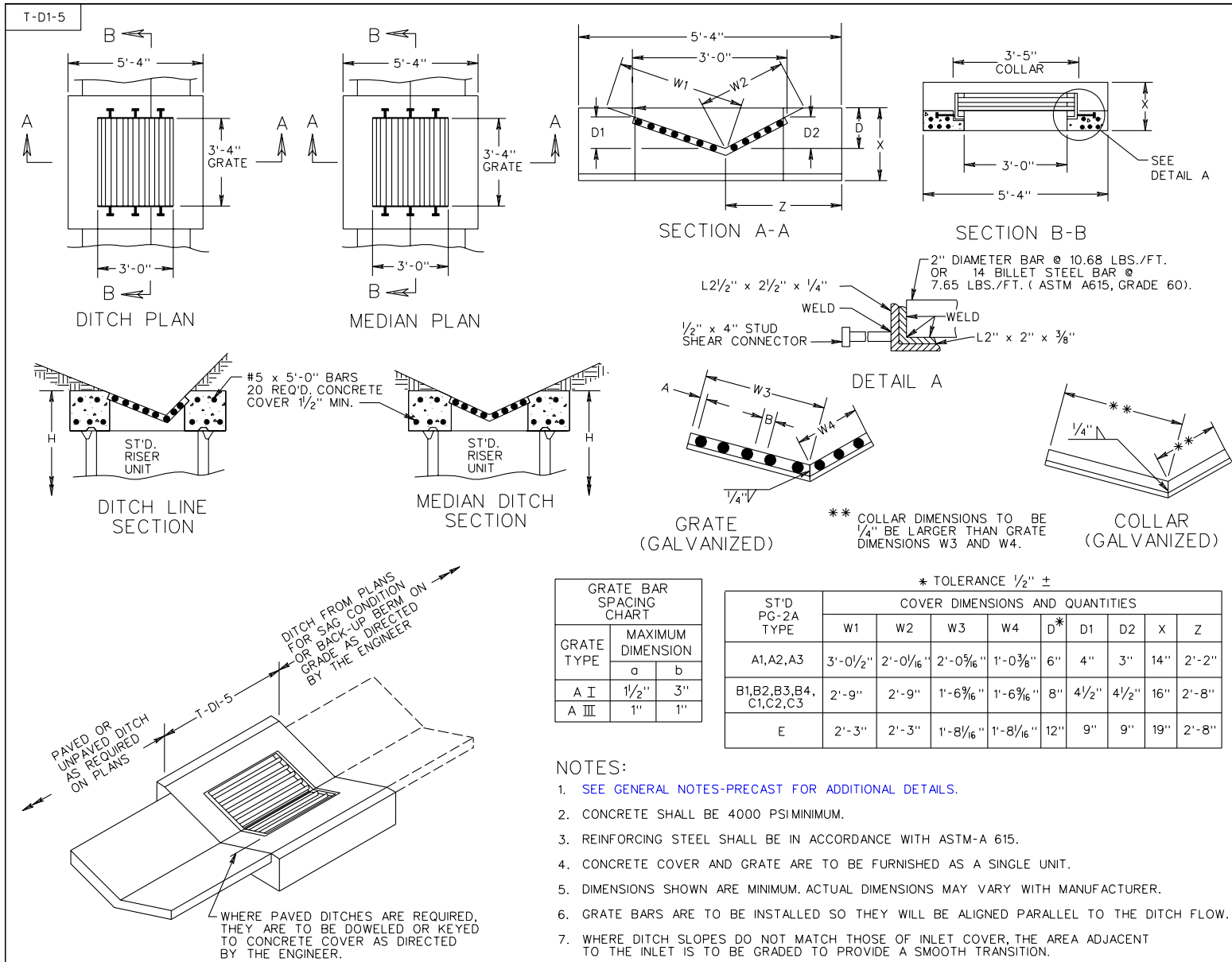


REVISED ON 7/05



STANDARD PRECAST TOP UNITS

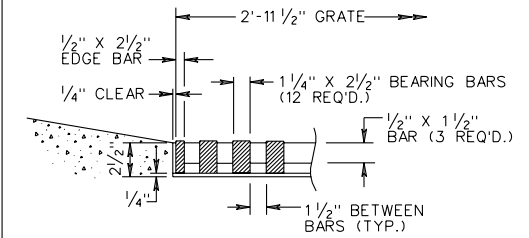
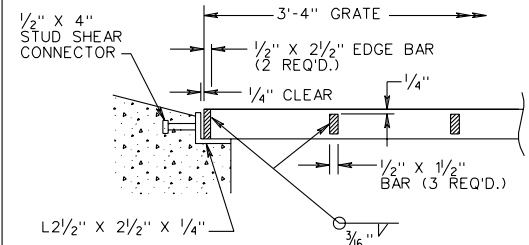
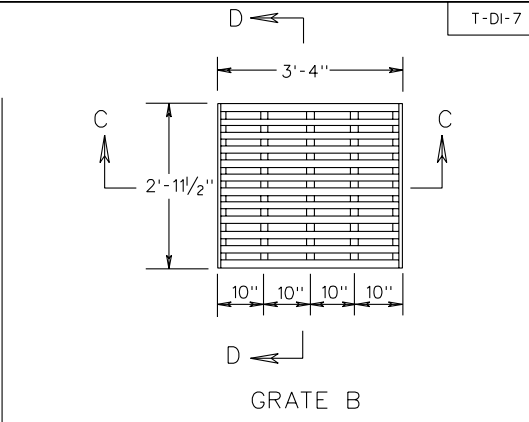
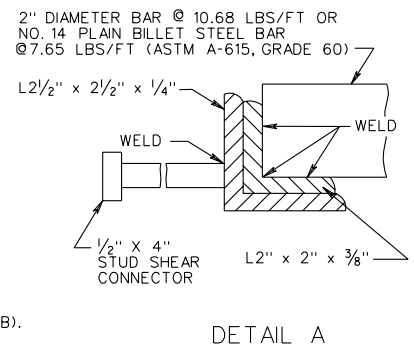
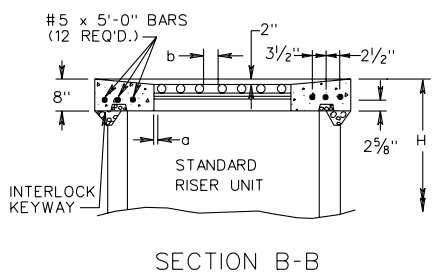
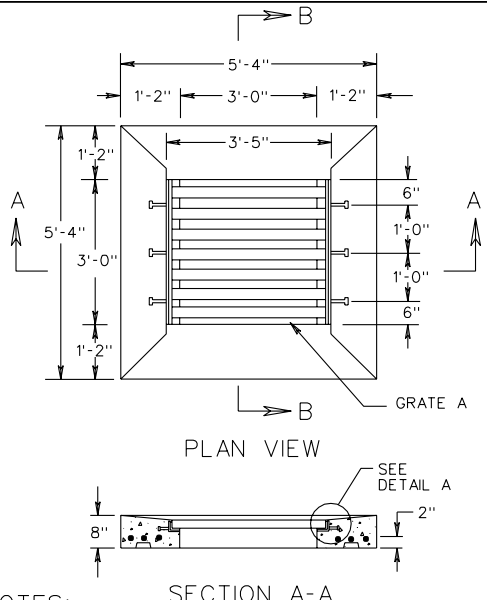
VIRGINIA DEPARTMENT OF TRANSPORTATION

SPECIFICATION REFERENCE

105
233
302

REVISED ON 7/05

T-DI-7



- NOTES:
- SEE GENERAL NOTES-PRECAST FOR ADDITIONAL DETAILS.
 - CONCRETE COVER AND GRATE ARE TO BE FURNISHED AS A SINGLE UNIT. OUTSIDE DIMENSIONS OF GRATE ARE TO BE 3'-4" X 2'-11 1/4" (GRATE A) OR 3'-4" X 2'-11 1/2" (GRATE B).
 - DIMENSIONS SHOWN ARE MINIMUM. ACTUAL DIMENSIONS MAY VARY WITH MANUFACTURER.
 - GRATE A IS TO BE USED WHEN INLET IS LOCATED IN MEDIAN OR OTHER AREAS NOT NORMALLY SUBJECT TO TRAFFIC. GRATE B IS TO BE USED WHEN INLET IS LOCATED ON SHOULDERS OR OTHER AREAS SUBJECT TO TRAFFIC.
 - ALTERNATE METHODS OF ANCHORING ANGLE IRON WILL BE ACCEPTABLE IF APPROVED BY THE ENGINEER.
 - GRATE AND COLLAR ARE TO BE GALVANIZED AFTER FABRICATION.
 - JOINTS BETWEEN CONCRETE COVER AND GUTTERS (WHEN REQUIRED) ARE TO BE DOWELED, KEYED, OR OTHER VDOT APPROVED METHODS.
 - CONCRETE SHALL BE 4000 PSI MINIMUM.
 - REINFORCING STEEL SHALL BE IN ACCORDANCE WITH ASTM A-615.
 - GRATE BARS ARE TO BE INSTALLED SO THEY WILL BE ALIGNED PARALLEL TO THE DITCH FLOW.
 - SEE STANDARD DI-7, 7A, 7B FOR DETAILS OF GUTTER, METHOD OF PLACEMENT, ALTERNATE METHODS OF CONSTRUCTION.

GRATE A BAR SPACING CHART		
GRATE TYPE	MAXIMUM DIMENSION	
	a	b
A I	1 1/2"	3"
A III	1"	1"

- NOTES:
- GRATE B IS TO BE USED WHEN INLET IS LOCATED ON SHOULDERS OR OTHER AREAS SUBJECT TO TRAFFIC.

DETAILS OF CONCRETE COVER AND GRATE A

DETAILS OF LOAD CARRYING GRATE B

SPECIFICATION REFERENCE
105
233
302

STANDARD PRECAST TOP UNITS

VIRGINIA DEPARTMENT OF TRANSPORTATION

103.08