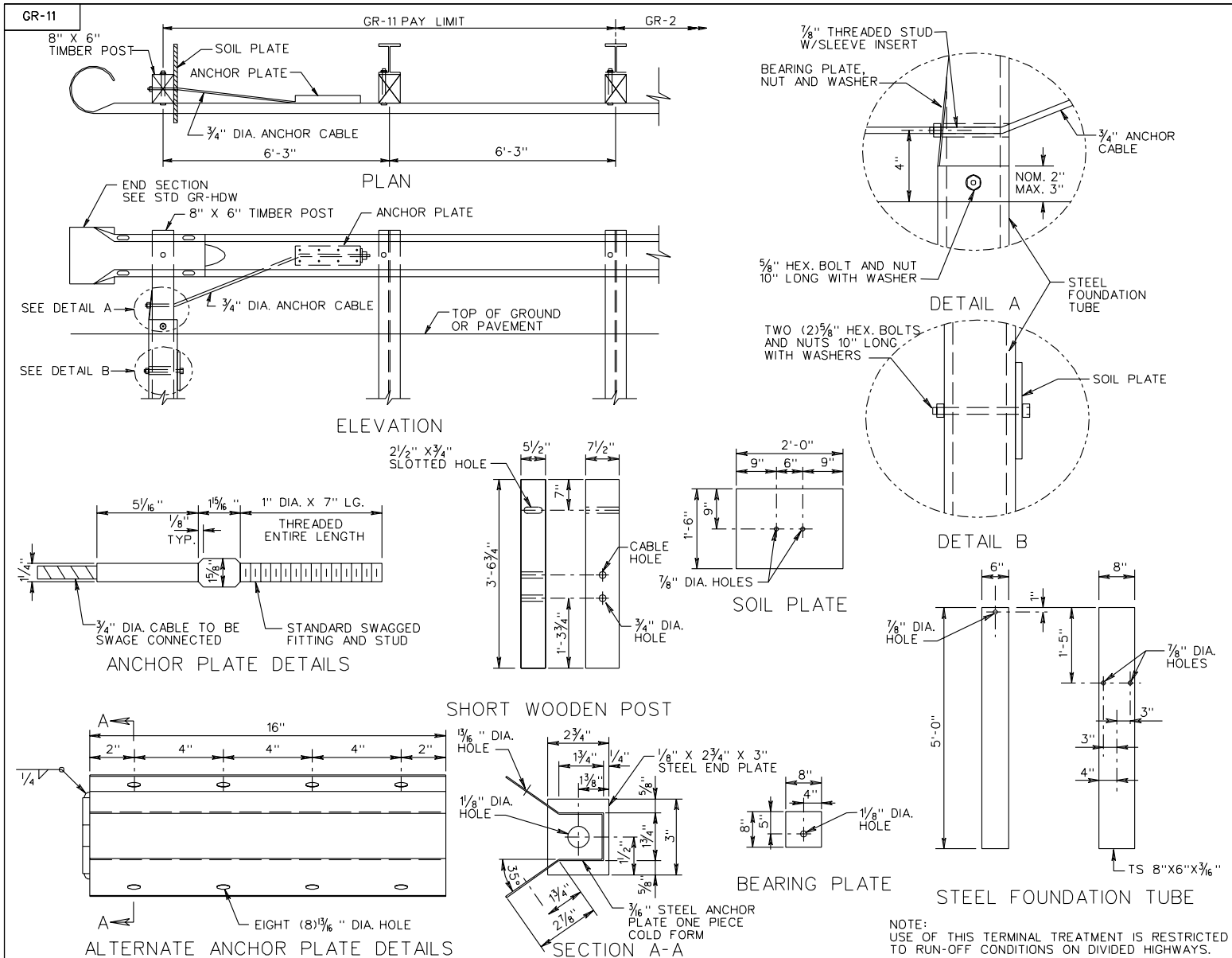


REVISED ON 7/05



# TRAILING END TERMINAL TREATMENT

REV. 7/03

501.21

VIRGINIA DEPARTMENT OF TRANSPORTATION

SPECIFICATION REFERENCE

505

221

REVISED ON 7/05

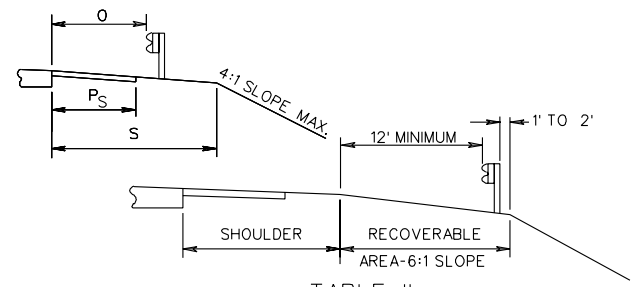
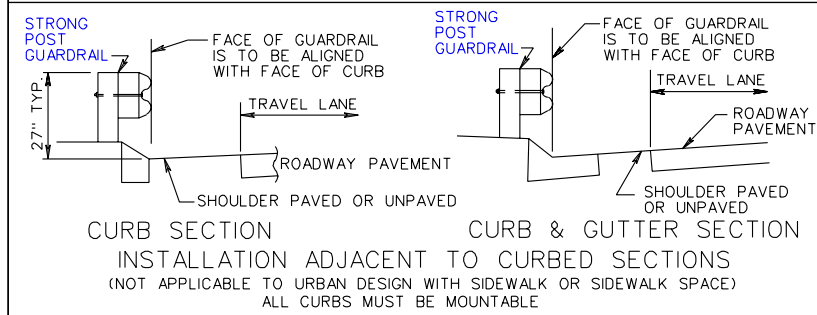
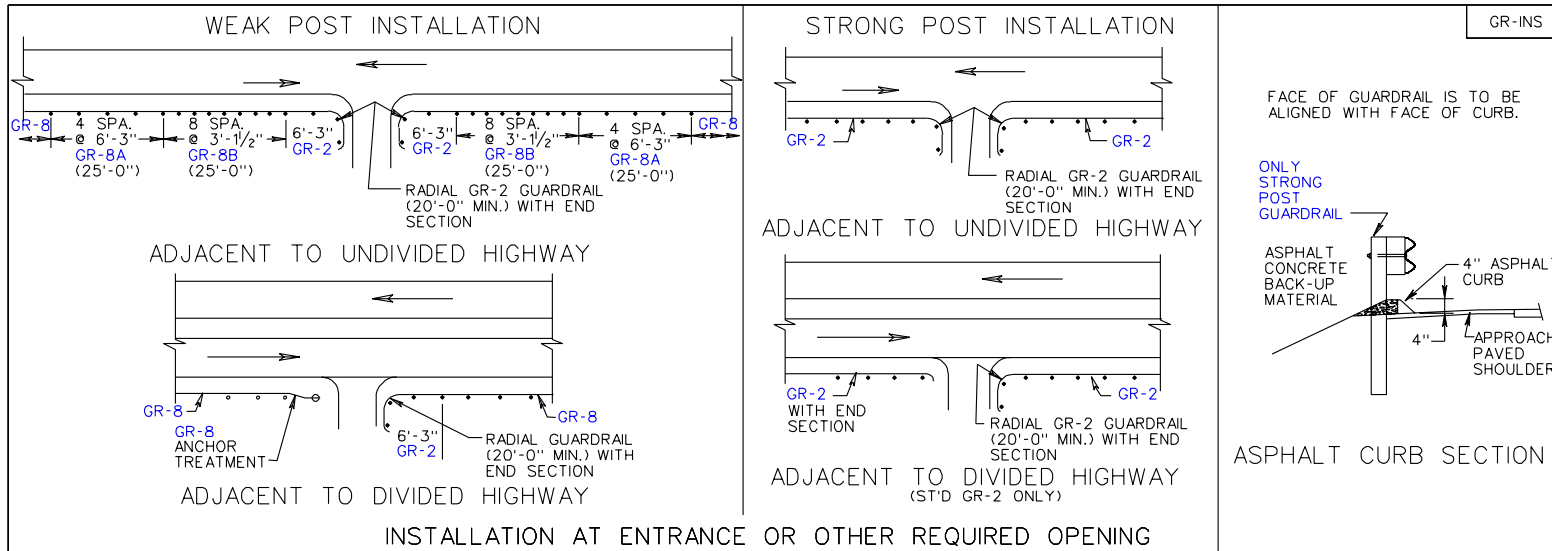


TABLE II  
 NORMAL GUARDRAIL LOCATION-THROUGH TRAFFIC LANES RIGHT OF TRAFFIC

| SHOULDER WIDTH (S) | PAVED SHOULDER WIDTH (P <sub>S</sub> ) | OFFSET FROM EDGE OF PAVEMENT TO FACE OF GUARDRAIL (O) |
|--------------------|--|---|
| 15'                | 6', 10' or 12'                         | 12'   |
| 13'                | 8'                                     | 10'   |
| 11'                | 0, 3', 4' or 6'                        | 8'  |
| 9'                 | 0, 3' or 4'                            | 6'  |
| 7'                 | 0 or 3'                                | 4'  |
| 5'                 | 0 or 3'                                | 2'  |

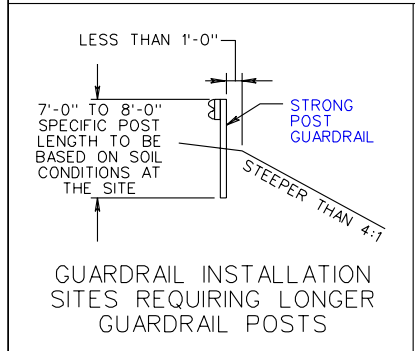


TABLE I  
 NORMAL GUARDRAIL LOCATION-THROUGH TRAFFIC LANES LEFT OF TRAFFIC

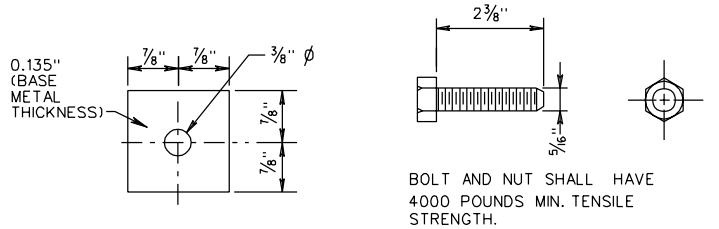
| SHOULDER WIDTH (S) | PAVED SHOULDER WIDTH (P <sub>S</sub> ) | OFFSET FROM EDGE OF PAVEMENT TO FACE OF GUARDRAIL (O) |
|--------------------|--|---|
| 15'                | 3', 4', 10' or 12'                     | 12'   |
| 13'                | 3'                                     | 10'   |
| 12' (MED. 6 LANE)  | 10'                                    | 10'   |
| 11'                | 3'                                     | 8'  |
| 8' (MED.)          | 3' or 4'                               | 5'  |

GUARDRAIL LOCATION-ON RECOVERABLE SLOPE

SHEET 6 OF 8

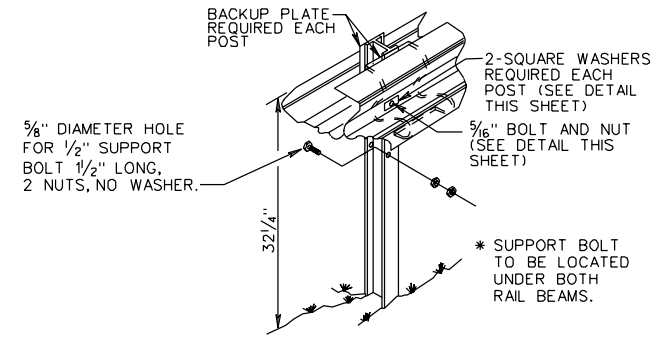
REVISED ON 7/05

MB-5

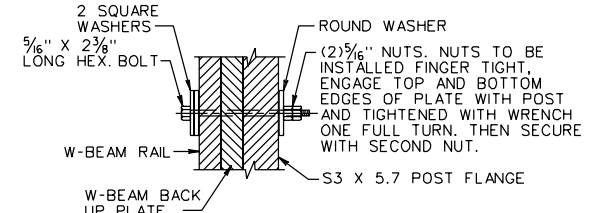


SQUARE WASHER 5/16" HEX BOLT AND NUT

⊗ THE GUARDRAIL AND MEDIAN BARRIER COMPONENTS DEPICTED IN A.R.T.B.A. TECHNICAL BULLETIN NUMBER 268B MAY BE SUBSTITUTED IF INTERCHANGEABLE WITH THE STANDARDS FOR GUARDRAIL (GR) OR MEDIAN BARRIER (MB) AND APPROVED BY THE ENGINEER.

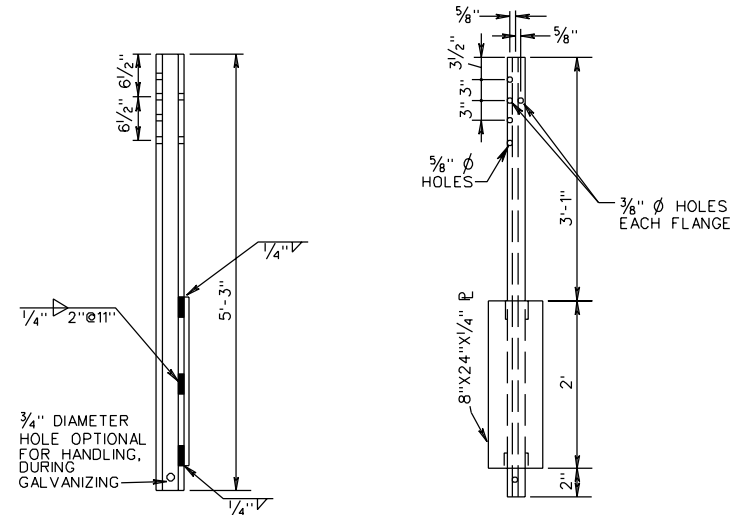


TYPICAL INSTALLATION



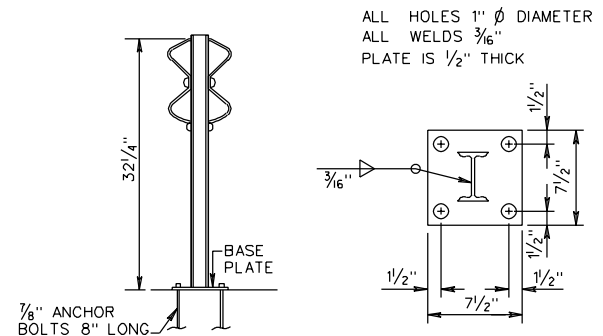
GUARDRAIL POST CONNECTION DETAIL

NOTES:  
 STANDARD MB-5 POST SPACING IS 12'-6"  
 STANDARD MB-5A POST SPACING IS 6'-3"  
 STANDARD MB-5B POST SPACING IS 3'-1 1/2"  
 STANDARD MB-5 DEFLECTION IS 8'-0"  
 ALL POSTS, BOLTS, NUTS AND WASHERS ARE TO BE GALVANIZED.  
 FOR DETAILS OF GUARDRAIL ELEMENT, HARDWARE, ETC. SEE SHEET NO. 501.01.  
 FOR DETAILS OF GUARDRAIL SPLICE JOINT, SEE STD. GR-8 DEPICTING AN NCHRP 350 TL-3 INSTALLATION.



FOR ROCK INSTALLATION, 8" X 26" X 1/4" PLATE IS TO BE ELIMINATED. DRILL OR EXCAVATE HOLE FOR POST, PLACE AND BACKFILL WITH CRUSHER RUN AGGREGATE TO LEVEL OF ROCK.

S3X5.7 STEEL POST



BASE PLATE

STRUCTURE MOUNTED BARRIER

|                         |            |
|-------------------------|------------|
| SPECIFICATION REFERENCE | 221<br>505 |
|-------------------------|------------|

STANDARD W BEAM MEDIAN BARRIER (WEAK POST SYSTEM)  
 TL-3 (>45 MPH)

VIRGINIA DEPARTMENT OF TRANSPORTATION

SHEET 1 OF 2

REV. 7/03  
 501.42