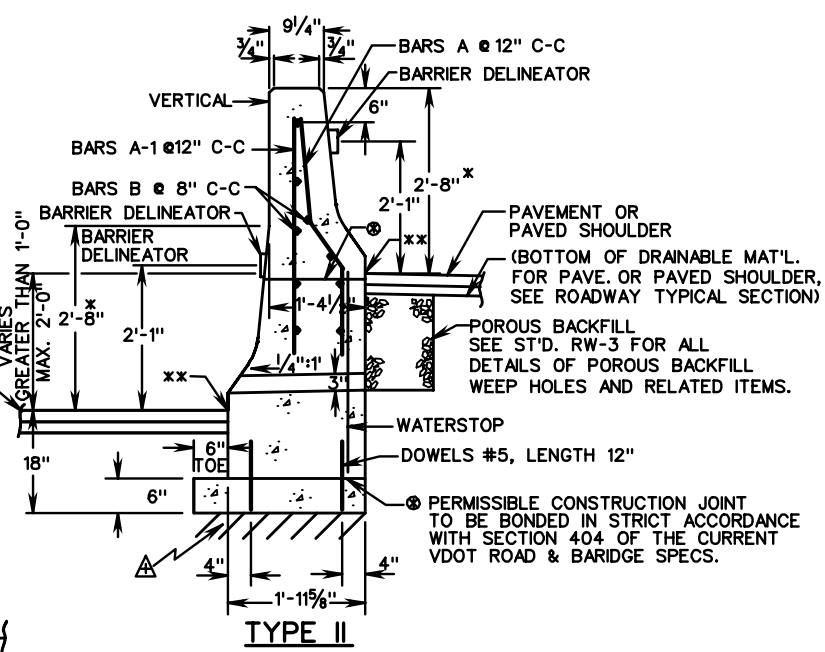
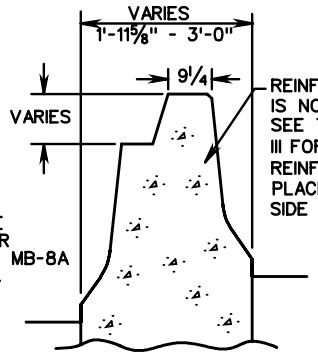
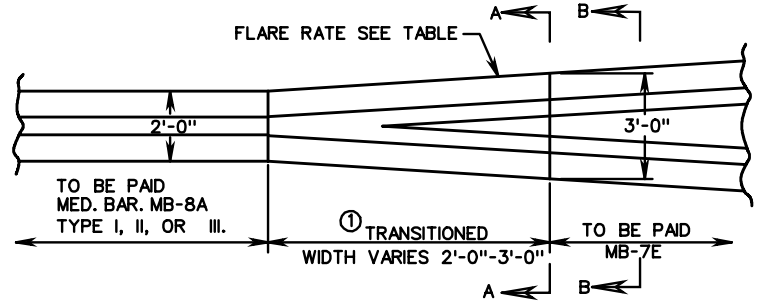


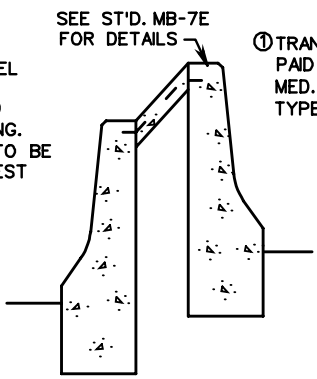
**TYPE I**  
TYPE I (GREATER THAN 0 HT. DIFF., MAX. 1'-0")



**TYPE II**  
TYPE II (GREATER THAN 1'-0" HT. DIFF., MAX. 2'-0")



**SECTION A-A**  
(FOUNDATION NOT SHOWN)



**SECTION B-B**  
(STD. MB-7E)

\* MB-7D BARRIER FACE

\*\* DENOTES FINISHED GRADE ELEVATION

△ FOUNDATION MATERIAL UNDER MEDIAN BARRIER IS TO BE COMPACTED.

FLARE RATES			
DESIGN SPEED	INSIDE SHY LINE		BEYOND SHY LINE
	SHY LINE LS	FLARE RATE	FLARE RATE
70	10'	30 : 1	20 : 1 ②
60	8'	26 : 1	18 : 1 ②
50	6.5'	21 : 1	14 : 1 ②
40	5'	16 : 1	10 : 1 ②
30	3.5'	13 : 1	8 : 1 ②

② MAXIMUM FLARE RATE FOR RIGID BARRIER SYSTEMS.

# CONCRETE MEDIAN BARRIER TYPE I, II OR III

VIRGINIA DEPARTMENT OF TRANSPORTATION

SPECIFICATION REFERENCE

- 105
- 404
- 502