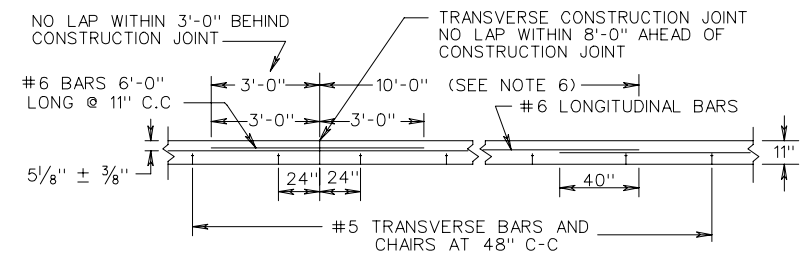
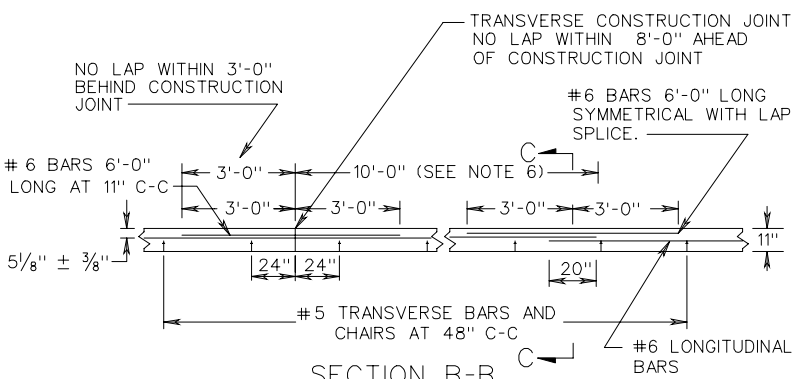


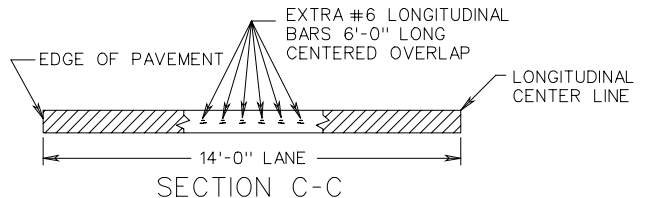
PLAN VIEW CONTINUOUSLY REINFORCED CONCRETE PAVEMENT



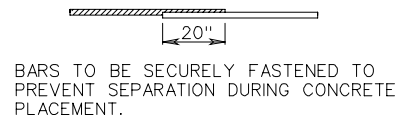
SECTION B-B DOUBLE LAP METHOD



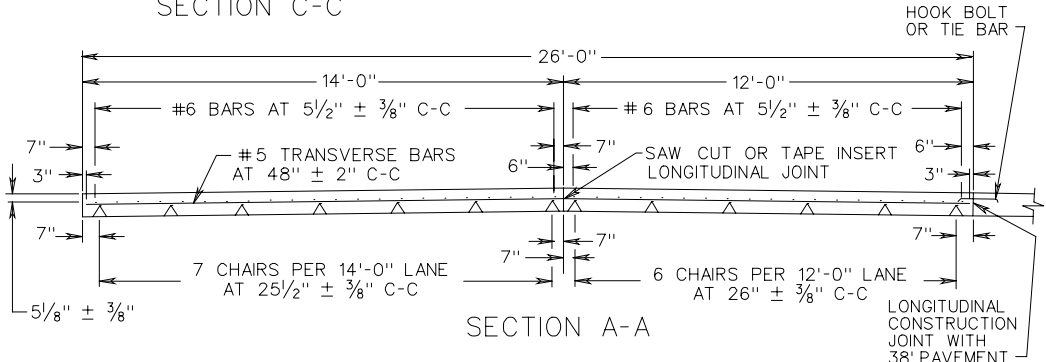
SECTION B-B EXTRA BAR METHOD



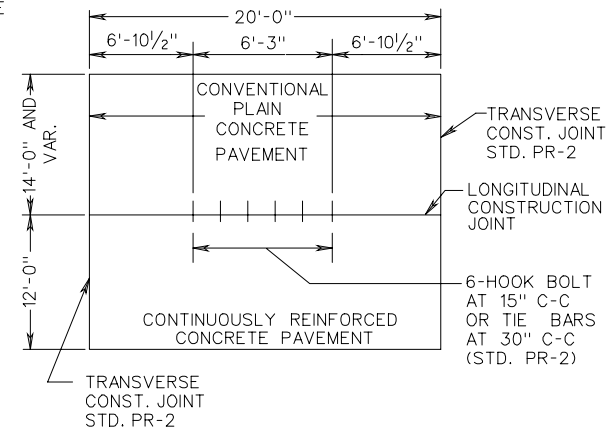
SECTION C-C



TYPICAL LONGITUDINAL LAP



SECTION A-A



PLAN-RAMP & MAIN LINE CONNECTION

SEE SHEET 3 OF 3 FOR NOTES

SHEET 10F 3

SPECIFICATION REFERENCE	<p>11" THICK CONTINUOUSLY REINFORCED CONCRETE PAVEMENT</p> <p>14 FOOT TRAVEL LANE</p> <p>VIRGINIA DEPARTMENT OF TRANSPORTATION</p>	REV. 7/03
316		301.19