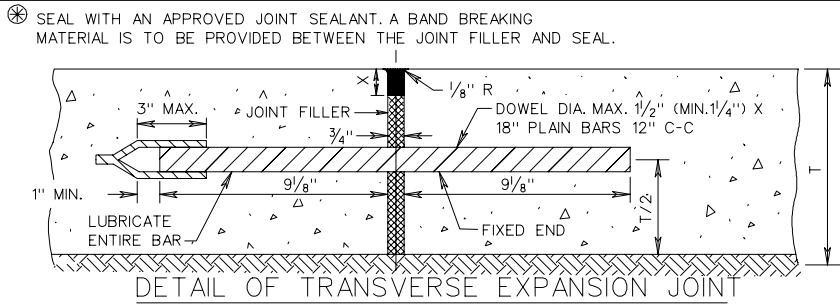
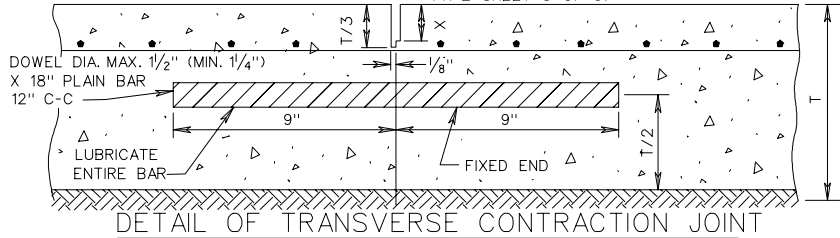


⊗ JOINT SEALANTS TO BE IN ACCORDANCE WITH DETAILS SHOWN ON STANDARD PR-2 SHEET 3 OF 5. FOR X AND Y DIMENSIONS SEE STANDARD PR-2 SHEET 3 OF 5.



FOR X AND Y DIMENSIONS SEE STANDARD PR-2 SHEET 3 OF 5.

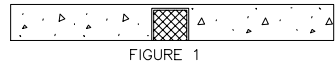


FIGURE 1

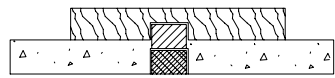


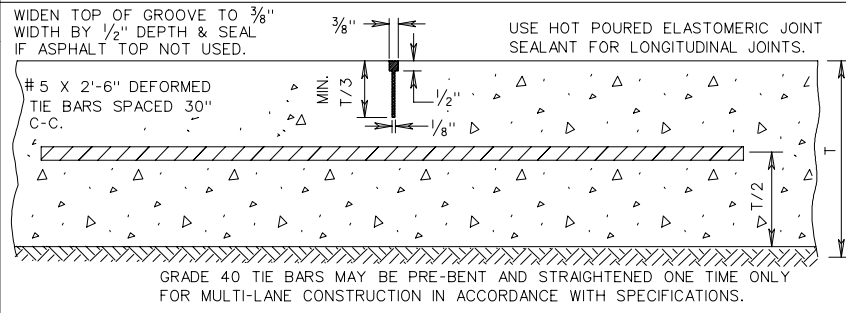
FIGURE 2

METHOD OF FINISHING

AT EXPANSION JOINTS

SMOOTH SURFACE TO BE STEEL TROWELED 8" IN FROM THE EDGE OF PAVEMENT EVERY 500', AND STATION NUMBER STAMPED INTO IT. THE DATE IS TO BE SHOWN IN A SIMILAR MANNER AT THE BEGINNING OF EACH DAYS POUR.

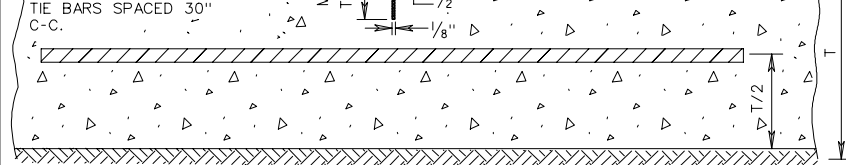
BOTH OUTSIDE EDGES OF DIVIDED HIGHWAY TO BE STAMPED. ONE EDGE OF UNDIVIDED HIGHWAYS WHERE FEASIBLE.



DETAIL OF LONGITUDINAL JOINT TIE BARS
SHOWING ADJACENT LANES POURED SIMULTANEOUSLY

WIDEN TOP OF GROOVE TO 3/8" WIDTH BY 1/2" DEPTH & SEAL IF ASPHALT TOP NOT USED.

USE HOT POURED ELASTOMERIC JOINT SEALANT FOR LONGITUDINAL JOINTS.

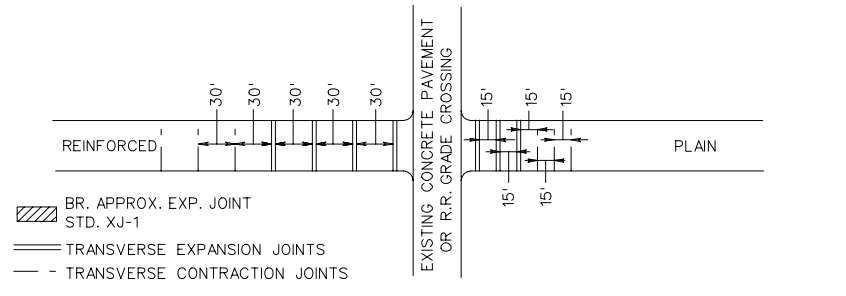
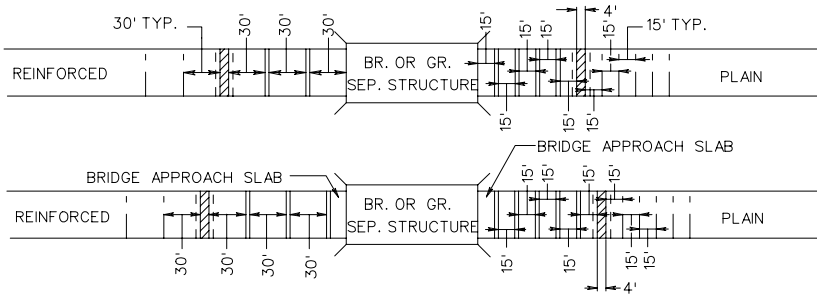


DETAIL OF LONGITUDINAL JOINT HOOK BOLTS

SHOWING PAVEMENT POURED IN SINGLE LANES

NOTE:
5/8" EFFECTIVE DIAMETER HOOK BOLTS TO BE 5/8" DIAMETER STOCK FOR ROLLED THREADS AND 5/8" DIAMETER STOCK FOR CUT THREADS O.D. OF THREADED PORTION TO BE 5/8".
ANY SIMILAR DEVICE OF EQUAL STRENGTH WILL BE ACCEPTED IF APPROVED BY THE ENGINEER.

NOTE:
#5 X 2'-6" DEFORMED TIE BARS AT 30" C-C MAY BE USED IN LIEU OF HOOK BOLTS.



DETAILS OF JOINTS LAYOUTS

(FOR USE WHEN COVERED ON JOINT LAYOUTS IN PLANS)

PLAIN AND REINFORCED CONCRETE PAVEMENT
SHOWING REINFORCEMENT, LONGITUDINAL AND TRANSVERSE JOINTS

SPECIFICATION REFERENCE