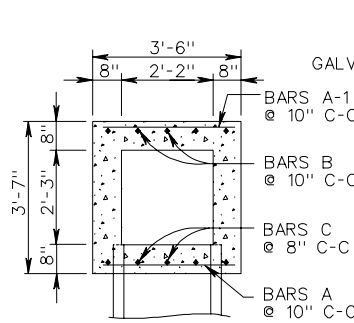
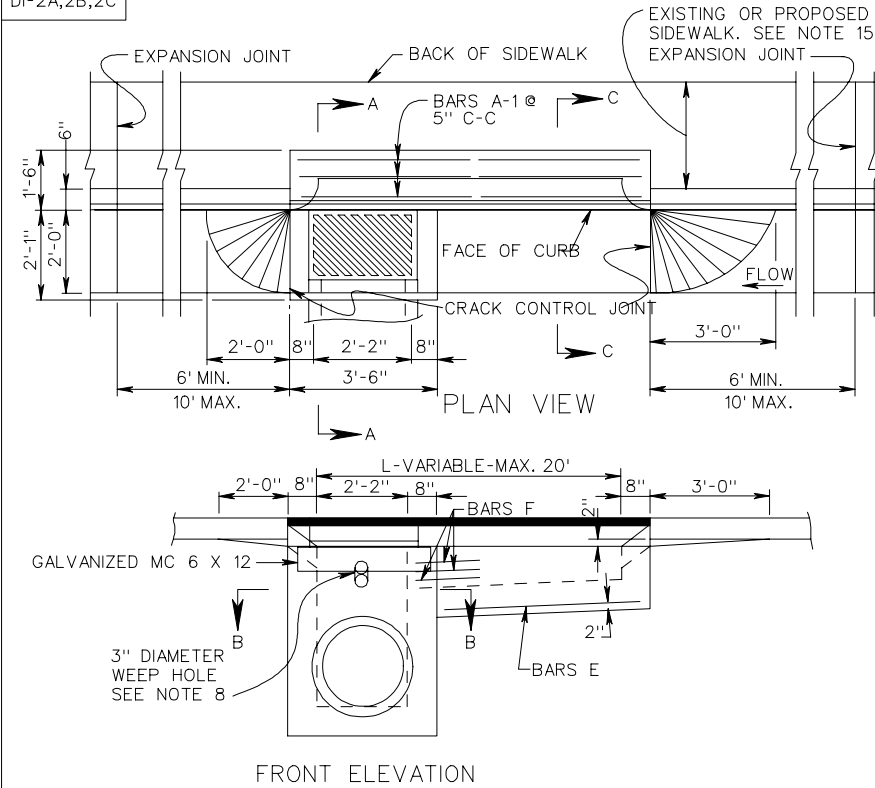
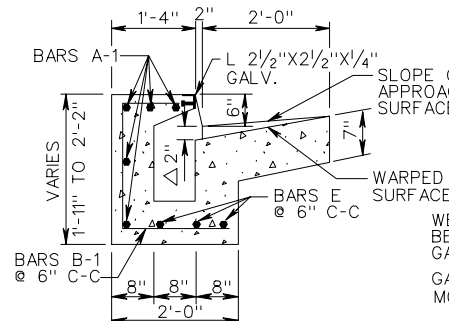


DI-2A,2B,2C

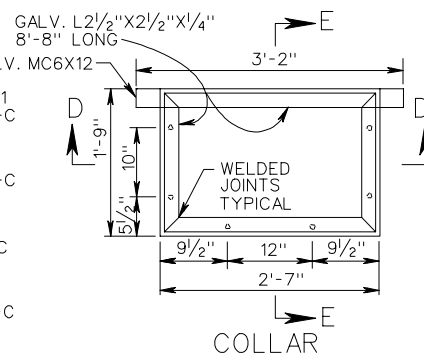


SECTION B-B

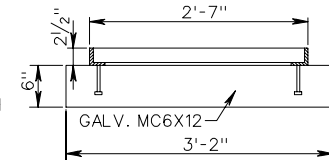


SECTION C-C

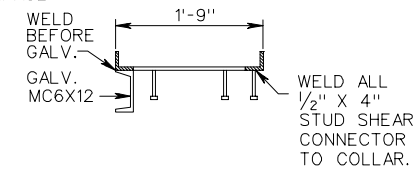
△ DECREASE TO 1" WHEN INLET IS USED WITH MEDIANS.



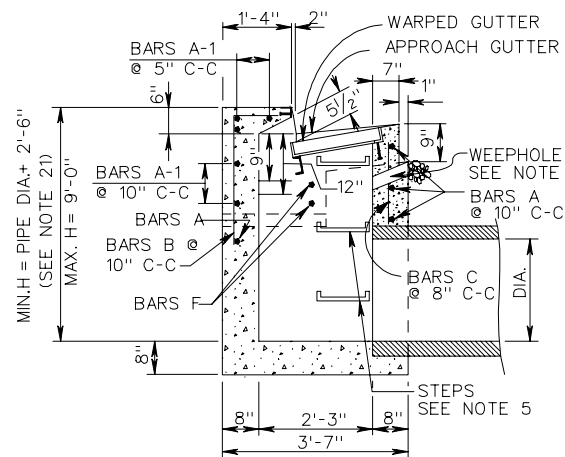
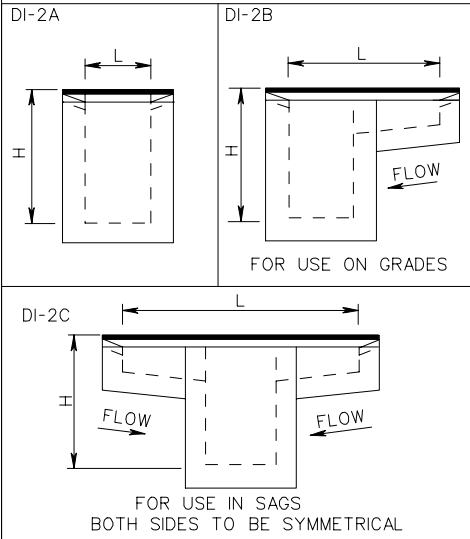
COLLAR



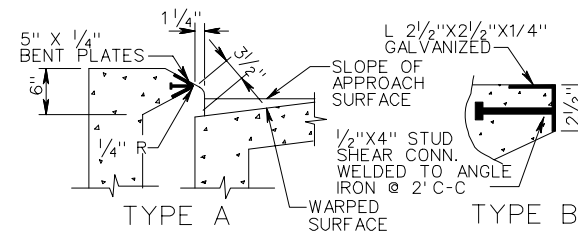
SECTION D-D



SECTION E-E



SECTION A-A FOR STEP DETAILS SEE STD. ST-1.



NOSE DETAILS

TYPE A NOSE DETAIL SHALL BE USED WITH CG-7 STANDARD.
 TYPE B NOSE DETAIL SHALL BE USED WITH CG-6 STANDARD.
 GALVANIZED PLATE FOR TYPE A TO BE BENT ON AN ANGLE OF 68° 30' AND IS TO BE ANCHORED WITH 1/2" X 4" STUD SHEAR CONNECTORS WELDED TO BENT PLATE AT 2' C-C.

SHEET 1 OF 2

STANDARD CURB DROP INLET
 12" - 24" PIPE: MAXIMUM DEPTH (H) = 9"

VIRGINIA DEPARTMENT OF TRANSPORTATION

SPECIFICATION REFERENCE

233
 302

REV. 7/05

104.03