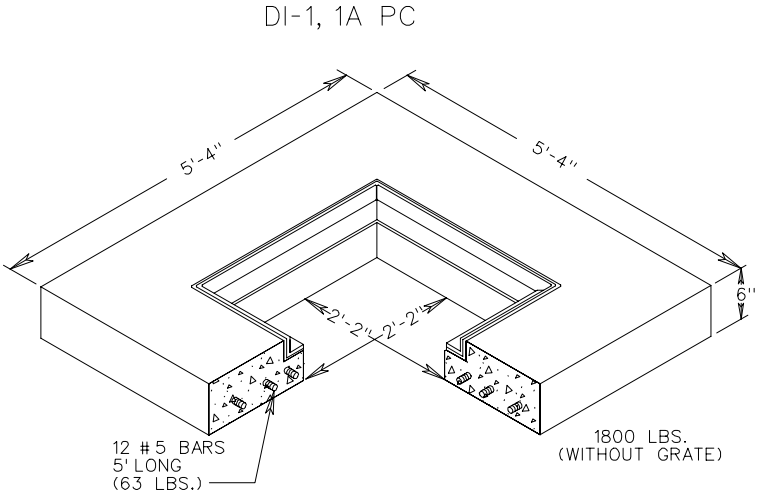
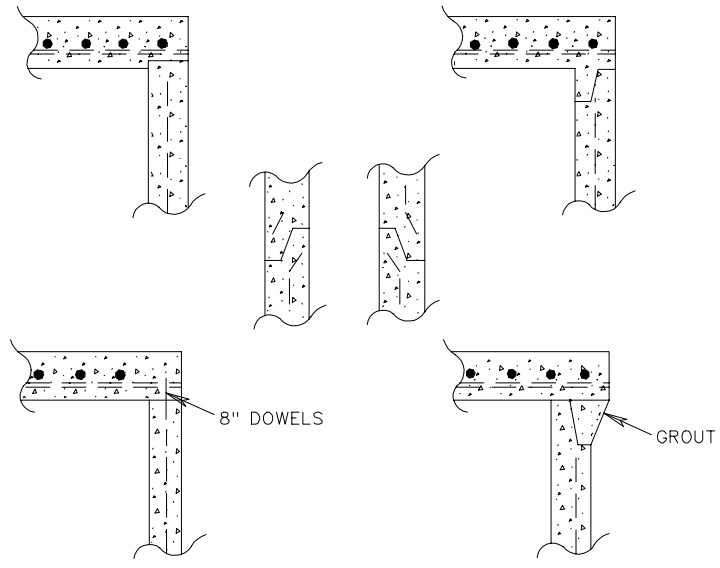


RECOMMENDED MINIMUM HEIGHT CHART

PIPE SIZE	H DIMENSION	
	CONCRETE	CORR. METAL
12"	2'-6"	2'-5"
15"	2'-9 <sup>1</sup> / <sub>4</sub> "	2'-8"
18"	3'-0 <sup>1</sup> / <sub>2</sub> "	2'-11"
21"	3'-3 <sup>3</sup> / <sub>4</sub> "	3'-2"
24"	3'-7"	3'-5"



- NOTES:
1. SEE GENERAL NOTES PRECAST FOR ADDITIONAL DETAILS.
  2. CONCRETE TO BE 4000 PSIMUMUM.
  3. REINFORCING STEEL IN ACCORDANCE WITH ASTM C-478, ASTM A-497 (WIRE FABRIC) AND ASTM A-615 (REINFORCING BARS).
  4. CONCRETE COVER AND GRATE ARE TO BE FURNISHED AS A SINGLE UNIT.
  5. SEE STANDARD DI-1, 1A FOR DETAILS OF FRAME AND GRATE.
  6. DIMENSIONS SHOWN ARE MINIMUM. ACTUAL DIMENSIONS MAY VARY WITH MANUFACTURER.



- NOTES:
1. TONGUE AND GROOVE JOINT TO BE OF FABRICATOR'S DESIGN MEETING THE APPROVAL OF THE ENGINEER. JOINTS ARE TO BE SEALED WITH MORTAR, OR O-RING GASKETS OR BUTYL RUBBER.
  2. ALTERNATE JOINT DETAILS APPLY TO ALL PRECAST UNITS.

ALTERNATE JOINT DETAILS

STANDARD PRECAST TOP UNITS

VIRGINIA DEPARTMENT OF TRANSPORTATION

SPECIFICATION REFERENCE

105  
233  
302