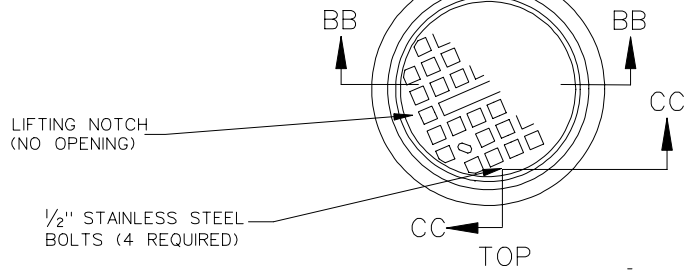


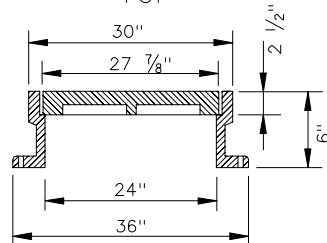
WF&C-1

4 7/8" CORED HOLES C 90°

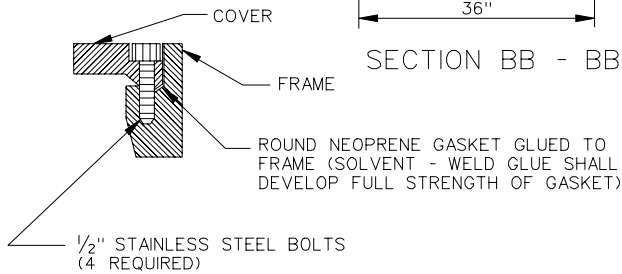


APPROXIMATE WEIGHTS

FRAME	220±	11 LBS.
COVER	260±	13 LBS.
TOTAL	480±	24 LBS.



SECTION BB - BB



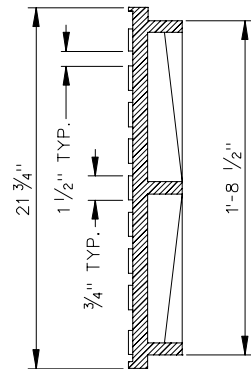
SECTION CC - CC

1. DETAILS NOT SHOWN ARE AS REQUIRED FOR ST'D F&C-1 M.H. FRAME AND COVER.
2. FRAME SHALL BE SET IN 1/4" BED OF NON-SAG JOINT SEALER & BOLTED TO THE MANHOLE CONE SECTION WITH 4 3/4" ANCHOR BOLTS.
3. CAST IRON SHALL CONFORM TO ASTM A-48, CLASS 30S.
4. SEATING SURFACES BETWEEN FRAME AND COVER SHALL BE MACHINED.
5. 1/4" x 1" CONTINUOUS NEOPRENE GASKET SHALL BE INSTALLED BETWEEN THE INNER COVER AND THE FRAME.
6. RECESSED PICK HOLE SHALL NOT EXTEND THRU THE COVER.

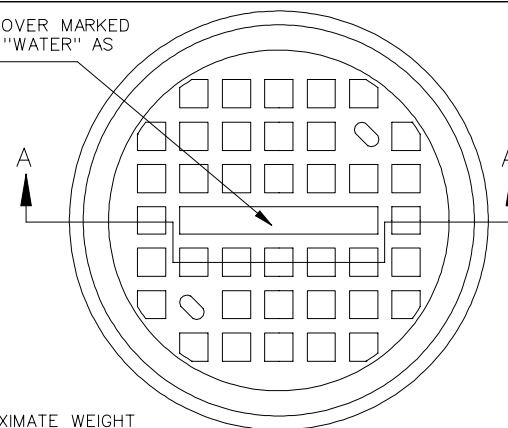
WATERTIGHT MANHOLE FRAME AND COVER

F&C-1

CAST IRON COVER MARKED "SEWER" OR "WATER" AS APPLIES.



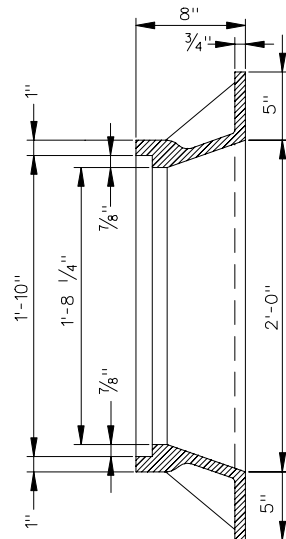
SECTION A-A



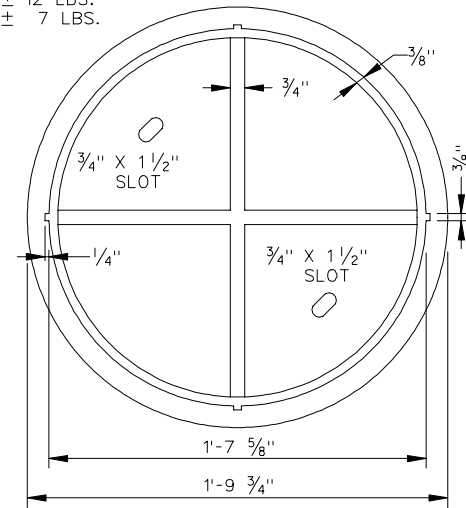
APPROXIMATE WEIGHT

CAST IRON FRAME	239 ±	12 LBS.
COVER	137 ±	7 LBS.

TOP



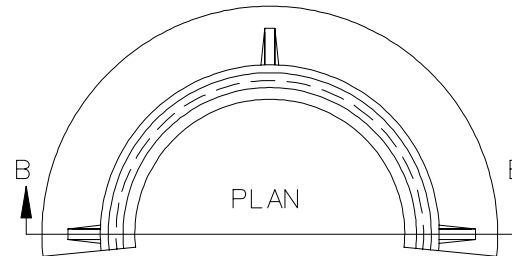
SECTION B-B



BOTTOM

NOTES:

1. CAST IRON SHALL CONFORM TO ASTM A-48M, CLASS 30S.
2. CASTING AND FRAME ARE TO BE MACHINED TO ENSURE A FIRM TIGHT FIT.
3. DIMENSIONS NOT SHOWN ARE THE SAME AS STANDARD MH-1 FRAME AND COVER.



PLAN

MANHOLE FRAME AND COVER

WATER AND SANITARY SEWER FACILITIES

VIRGINIA DEPARTMENT OF TRANSPORTATION