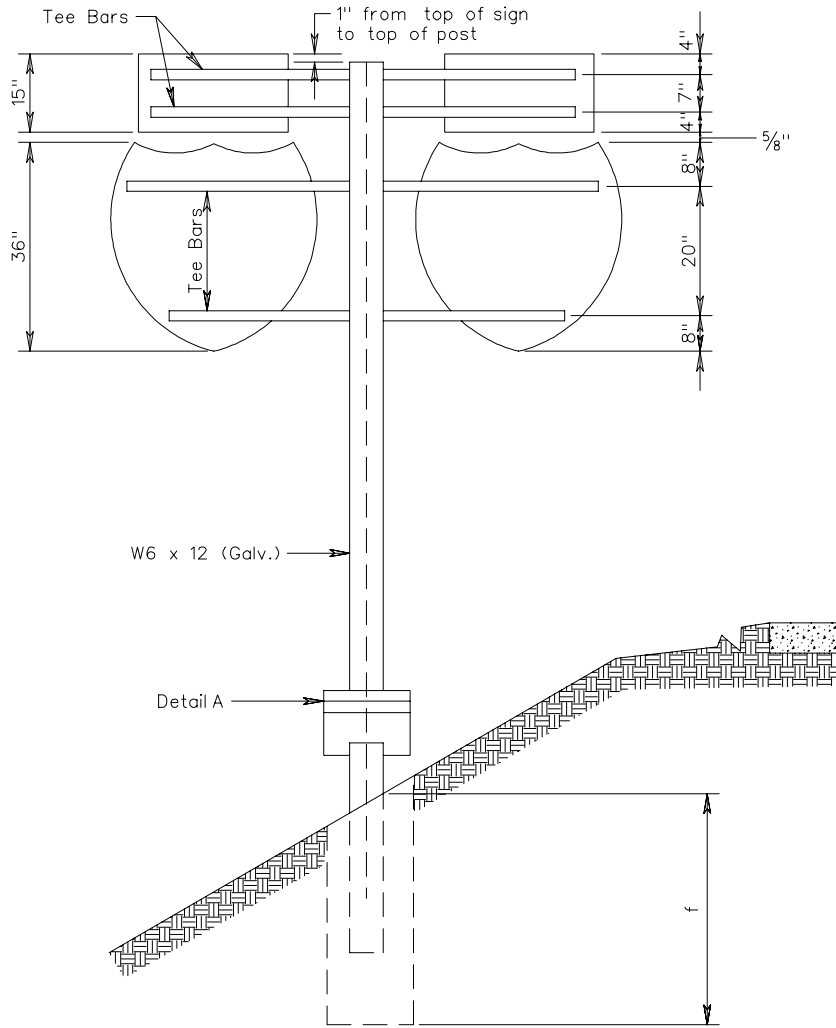
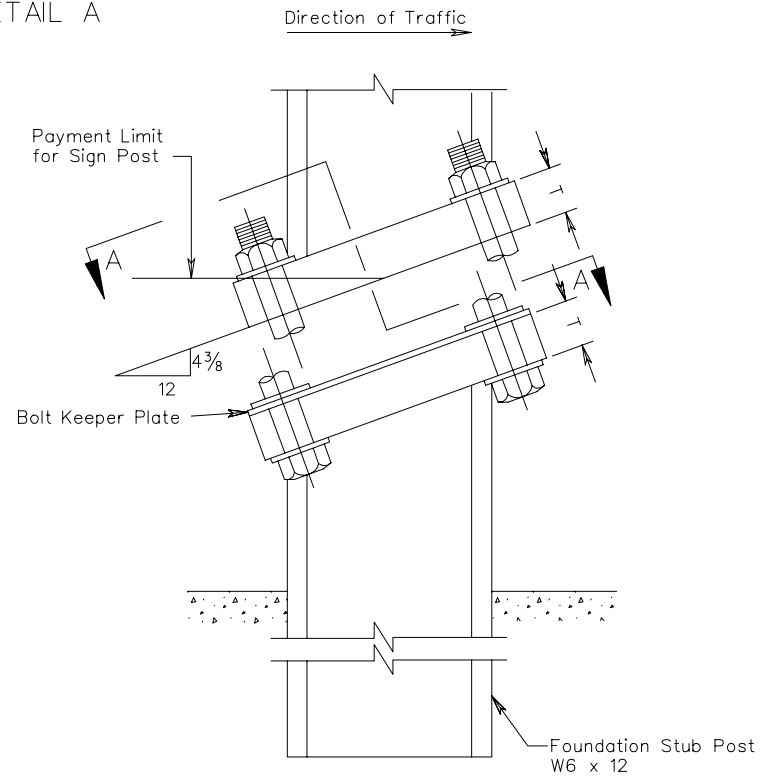


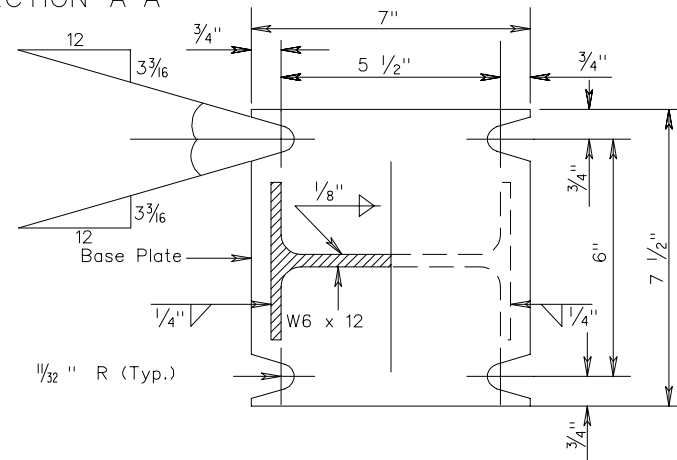
TYPE VA-A2



DETAIL A



SECTION A-A



NOTES:

- There is to be a maximum space of 1" between signs
- Cardinal directions are to be centered above shields.
- For details of shims, tee bars, clamps, and other notes, see standard 1301.63.

TYPICAL DETAILS FOR TYPE VA
SIGN STRUCTURES

VIRGINIA DEPARTMENT OF TRANSPORTATION