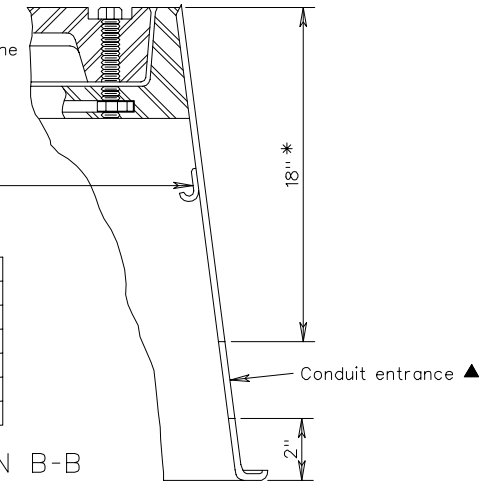


STANDARD	DIMENSIONS	
	A	B
JB-1C	12"	12"
JB-2C	12"	18"
JB-3C	18"	18"
JB-4C	18"	24"
JB-5C	24"	24"

SECTION A-A

SECTION B-B



Notes:

- Conduit entrances shall be located as shown on the plans.
- Bell ends shall be installed on the ends of PVC conduits.
- Grounding bushings shall be installed on the ends of metal conduits.
- Bell ends and bushings shall be plugged to prevent moisture and rodent entry.
- Depth of conduit entrance for use of magnetic detectors shall be in accordance with Standard TD-2.
- The junction box shall be of a polymer concrete with fiberglass sides.
- The cover shall have a non-skid surface with letters cast in the depression on top. The letters "VDOT ELEC", "VDOT TRAF", "VDOT COMM" or "UTILITY" as applicable are to be 1" wide and raised 1/4" high. Covers used for junction boxes installed within municipalities shall not require the VDOT reference.
- All junction boxes shall be installed with a ground rod unless box houses only communication/interconnect cable.

- Two recessed 3/8" Hex head bolts are required for each cover.
- ▲ A minimum 2" diameter conduit entrance is required, unless otherwise specified on the plans.
- A concrete collar is required only when junction box is installed in earth areas.
- Conduits shall extend 2" to 3" max. beyond the inside wall of the junction box.
- The junction box may be a two piece design with the top section no less than 17" in depth.
- VOIDS resulting from entrance of conduits into junction boxes shall be completely filled with an appropriate material.

JUNCTION BOX