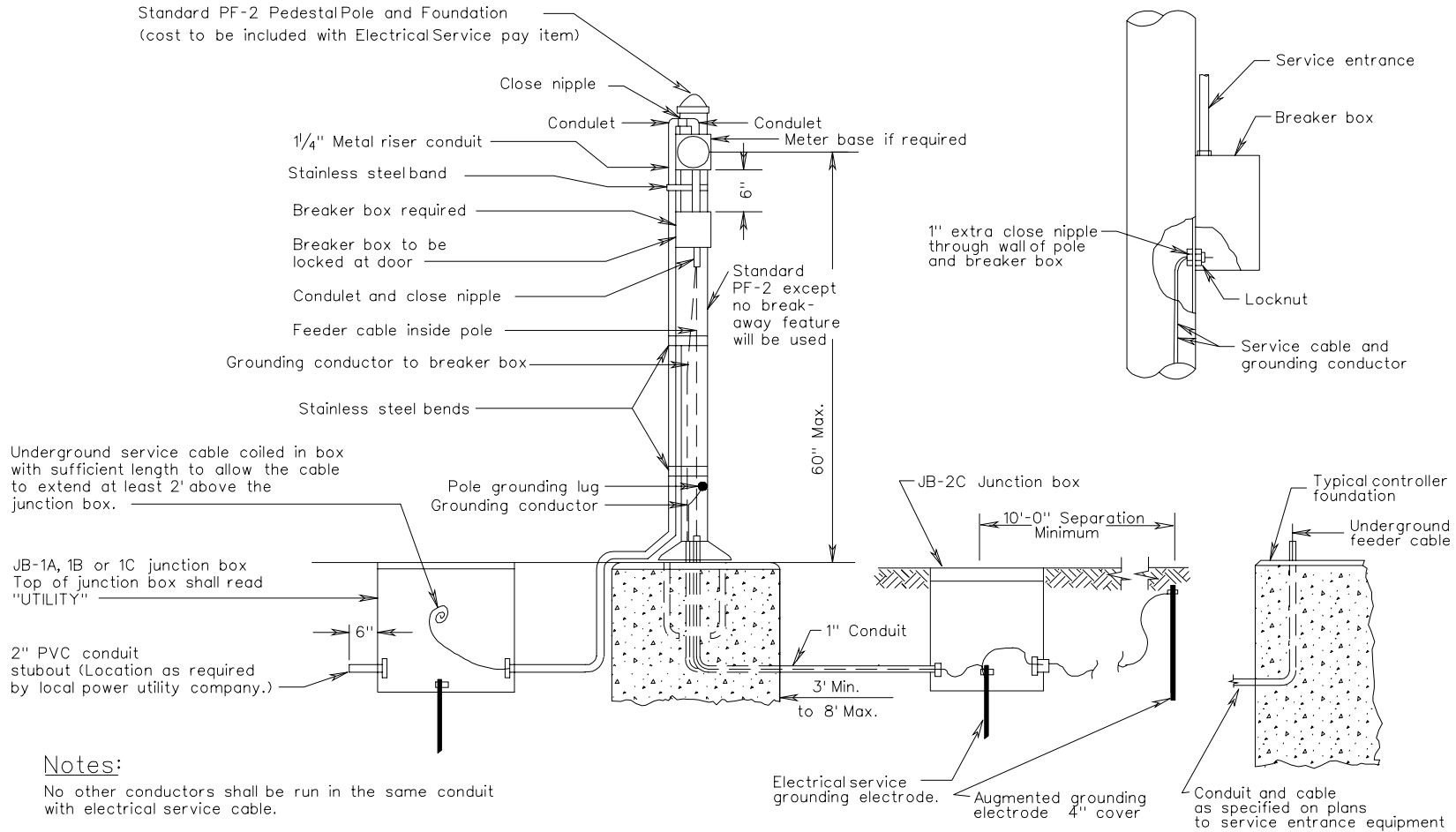


ALTERNATE METHOD OF SERVICE CABLE AND GROUNDING CONDUCTOR ENTERING BREAKER BOX



Underground service cable coiled in box with sufficient length to allow the cable to extend at least 2' above the junction box.

JB-1A, 1B or 1C junction box  
Top of junction box shall read "UTILITY"

2" PVC conduit stubout (Location as required by local power utility company.)

Notes:

No other conductors shall be run in the same conduit with electrical service cable.

Local power utility company will install service power utility cable from their power source to the junction box and make required splices to the service cable coiled in the junction box.

PEDESTAL POLE WITH GROUND MOUNTED CABINET

ELECTRICAL SERVICE DETAILS  
SIGNAL INSTALLATION