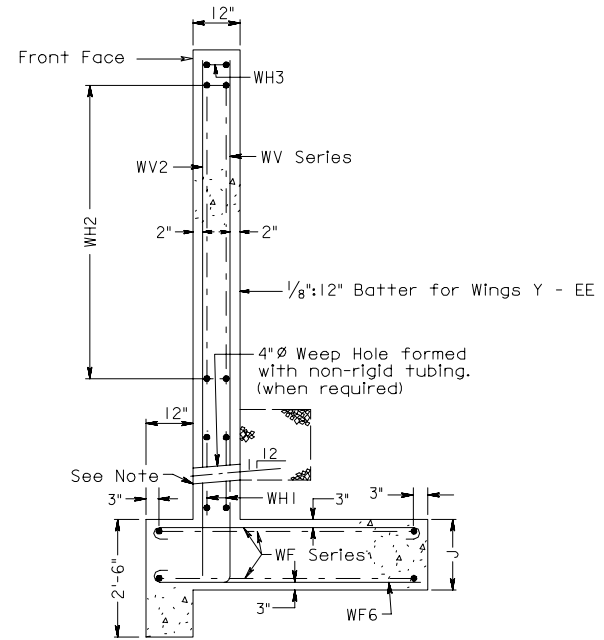
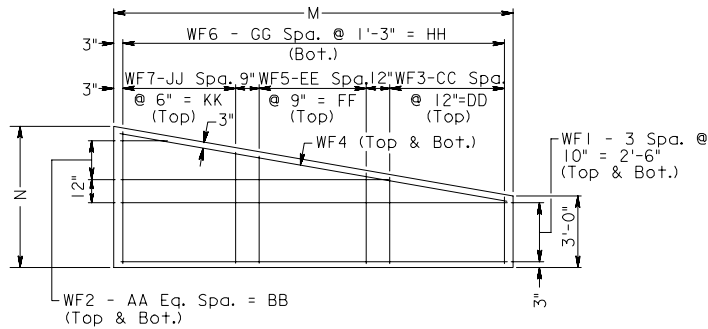


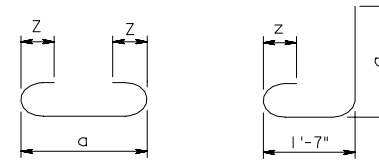
FRONT ELEVATION



END VIEW



FOOTING PLAN



WF3, WF5, WF7

WV1, WV3, WV4

TABLE B		
Bar Size	Pin Dia.	Z
#3	2 1/4"	4"
#4	3"	4 1/2"
#5	3 3/4"	5"
#6	4 1/2"	6"
#7	5 1/4"	7"
#8	6"	8"
#9	9"	10 1/8"

TABLE C	
Bar Size	Splice Length
#4	1'-4"
#5	1'-8"
#6	1'-11"
#7	2'-4"
#8	3'-1"
#9	3'-11"