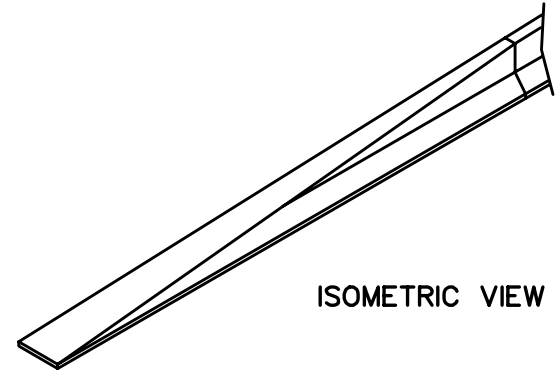


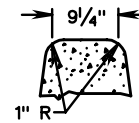
PLAN VIEW



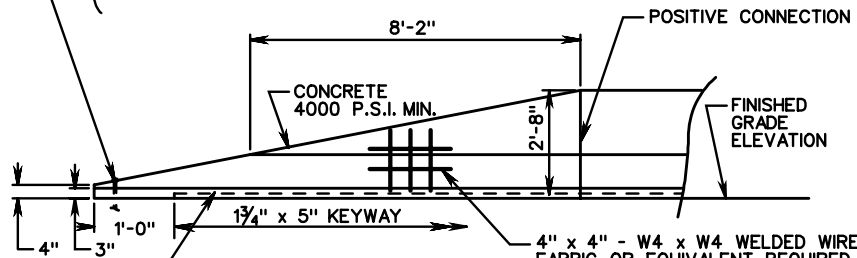
ISOMETRIC VIEW

1" I.D. METAL SLEEVE ( REINFORCING STEEL SHALL SURROUND 1" I.D. METAL SLEEVE )

USE 3/4" x 9" EXPANSION BOLTS FOR RIGID PAVEMENT INSTALLATION ONLY ( BOLTS TO BE REMOVABLE )  
 USE 3/4" x 3'-0" DRIFT PINS FOR FLEXIBLE PAVEMENT INSTALLATIONS.



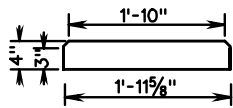
ALTERNATE TOP



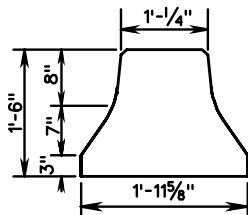
ELEVATION VIEW

MANUFACTURER'S REINFORCING STEEL DESIGN IS TO BE APPROVED BY ENGINEER.

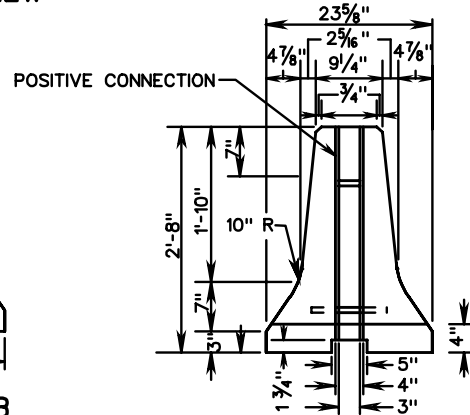
BASIS OF PAYMENT: CONCRETE MEDIAN BARRIER 12' TERMINAL SECTION IS TO BE MEASURED AND PAID FOR IN LIN. FT. ST'D. MB-7D, OR LIN. FT. OF TRAFFIC BARRIER SERVICE CONCRETE.



SECTION A-A



SECTION B-B



SECTION C-C

NOTES:

- CONCRETE TO BE 4000 P.S.I..
- REINFORCING STEEL TO BE GRADE 60. ALL REINFORCING IS TO HAVE A MINIMUM CONCRETE COVER OF 1/2".
- FOR USE WHERE THE OPERATING SPEED IS 40 M.P.H. OR LESS.
- LOCATION OF THE BARRIER END SECTIONS TO BE AS NOTED ON PLANS OR AS APPROVED BY THE ENGINEER.
- FOR POSITIVE CONNECTION DETAILS AND DIMENSIONS SEE STANDARD MB-INS.
- ONLY FOR USE OUTSIDE OF CLEAR ZONE.

SPECIFICATION REFERENCE
105

**PRECAST CONCRETE MEDIAN BARRIER**  
**12 FT. TERMINAL SECTION**  
 VIRGINIA DEPARTMENT OF TRANSPORTATION