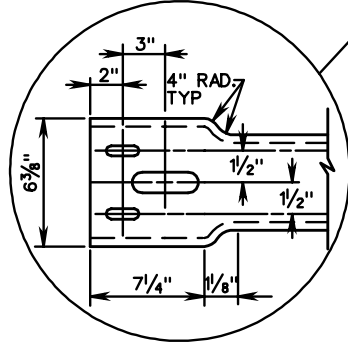
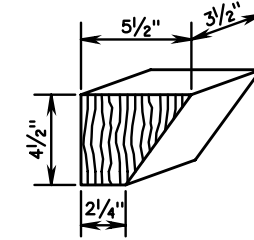


ITEM ⑦ DETAIL

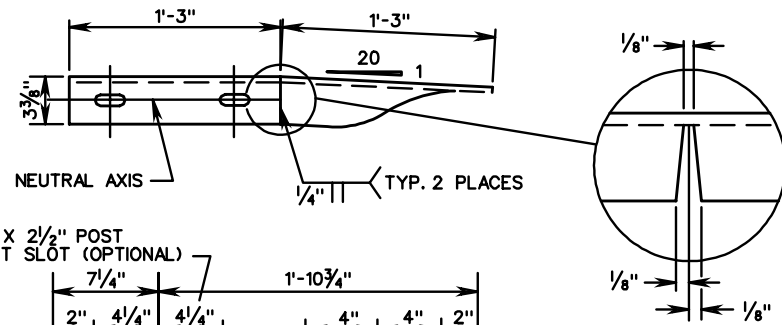


NOTES:

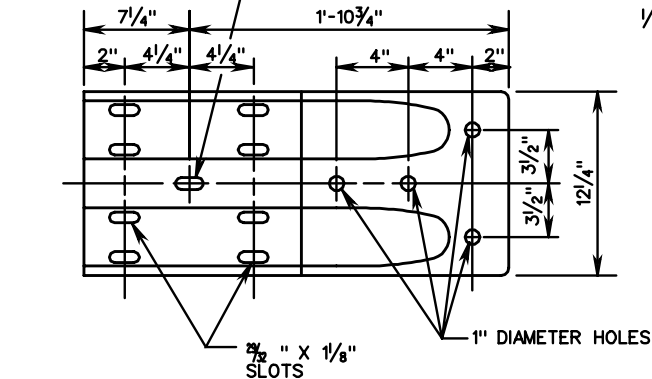
1. CAN BE FIELD CUT AND BENT USING HEAT. IF SHOP CUT AND BENT, RIGHT HAND OR LEFT HAND MUST BE SPECIFIED, DEPENDING ON WHICH SIDE OF THE ROADWAY THE TRANSITION IS USED.



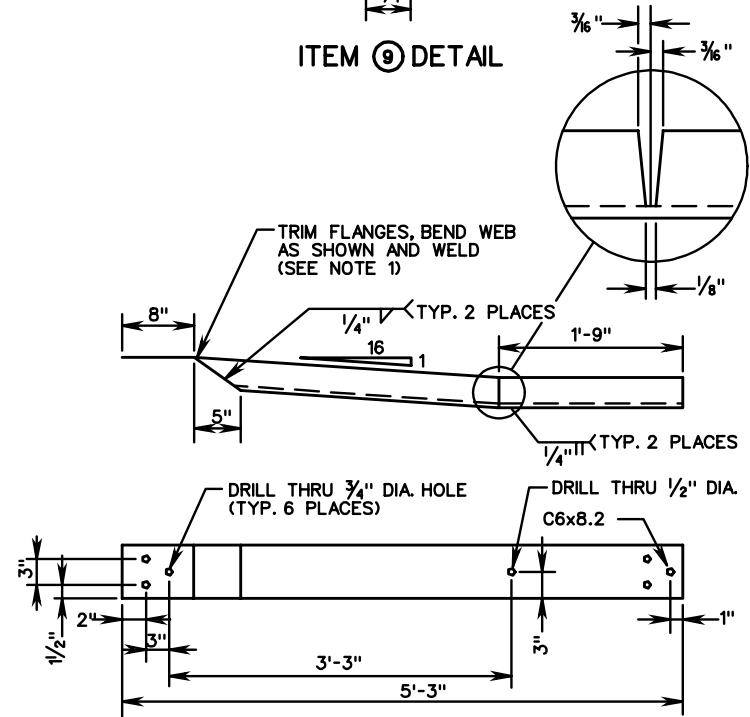
ITEM ⑨ DETAIL



3/4" X 2 1/2" POST BOLT SLOT (OPTIONAL)



W BEAM TERMINAL CONNECTOR (MOD.)



ITEM ⑧ DETAIL

SPECIFICATION REFERENCE

505

BLOCKED-OUT W-BEAM MEDIAN BARRIER-FIXED OBJECT ATTACHMENT RUBRAIL AND HARDWARE DETAILS

VIRGINIA DEPARTMENT OF TRANSPORTATION