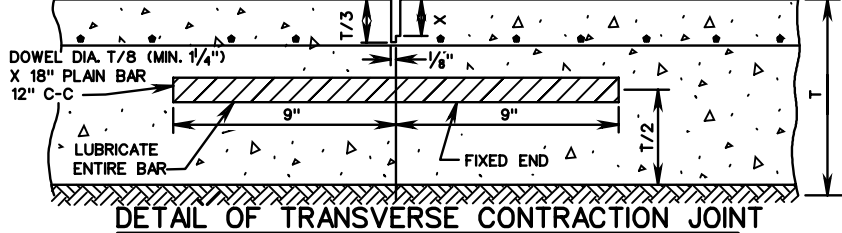
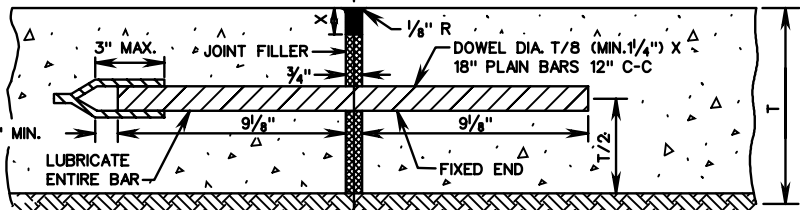


⊗ JOINT SEALANTS TO BE IN ACCORDANCE WITH DETAILS SHOWN ON STANDARD PR-2 SHEET 3 OF 5. FOR X AND Y DIMENSIONS SEE STANDARD PR-2 SHEET 3 OF 5.



DETAIL OF TRANSVERSE CONTRACTION JOINT

⊗ SEAL WITH AN APPROVED JOINT SEALANT. A BAND BREAKING MATERIAL IS TO BE PROVIDED BETWEEN THE JOINT FILLER AND SEAL.



DETAIL OF TRANSVERSE EXPANSION JOINT

FOR X AND Y DIMENSIONS SEE STANDARD PR-2 SHEET 3 OF 5.



FIGURE 1



FIGURE 2

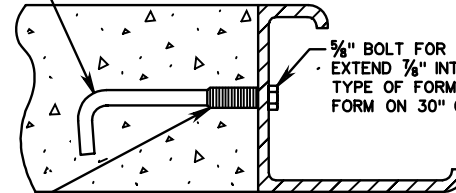
METHOD OF FINISHING

AT EXPANSION JOINTS

SMOOTH SURFACE TO BE STEEL TROWELED 8" IN FROM THE EDGE OF PAVEMENT EVERY 500', AND STATION NUMBER STAMPED INTO IT. THE DATE IS TO BE SHOWN IN A SIMILAR MANNER AT THE BEGINNING OF EACH DAYS POUR.

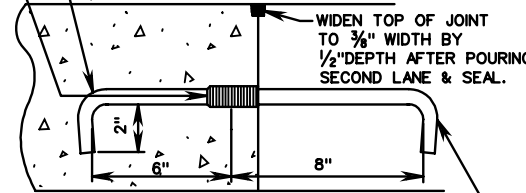
BOTH OUTSIDE EDGES OF DIVIDED HIGHWAY TO BE STAMPED. ONE EDGE OF UNDIVIDED HIGHWAYS WHERE FEASIBLE.

3/8" EFFECTIVE DIAMETER X 6" HOOK BOLT



1 3/4" MIN., MALLEABLE IRON OR STEEL SLEEVE THREADED ENTIRE LENGTH ON INSIDE TO RECEIVE 3/8" BOLT.

3/8" EFFECTIVE DIAMETER X 6" HOOK BOLT.

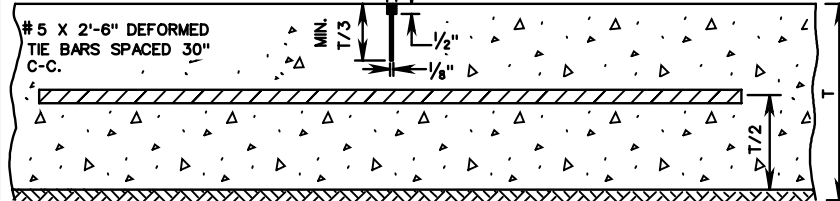


3/8" EFFECTIVE DIAMETER X 8" HOOK BOLT

DETAIL OF LONGITUDINAL JOINT HOOK BOLTS

SHOWING PAVEMENT POURED IN SINGLE LANES

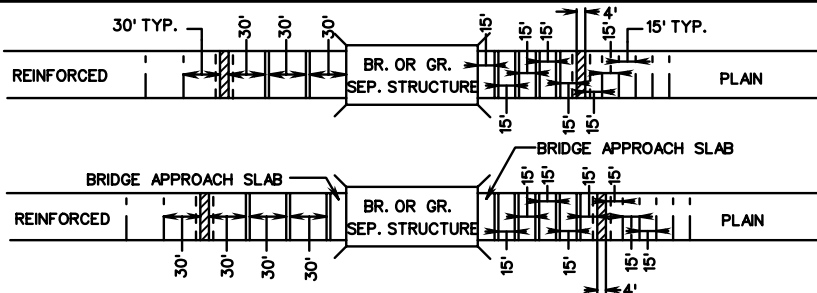
WIDEN TOP OF GROOVE TO 3/8" WIDTH BY 1/2" DEPTH & SEAL IF ASPHALT TOP NOT USED.



GRADE 40 TIE BARS MAY BE PRE-BENT AND STRAIGHTENED ONE TIME ONLY FOR MULTI-LANE CONSTRUCTION IN ACCORDANCE WITH SPECIFICATIONS.

DETAIL OF LONGITUDINAL JOINT TIE BARS

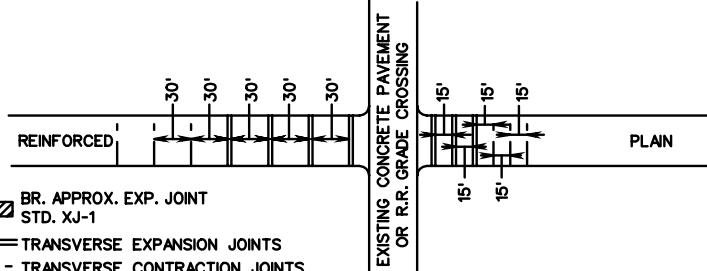
SHOWING ADJACENT LANES POURED SIMULTANEOUSLY



DETAILS OF JOINTS LAYOUTS

(FOR USE WHEN COVERED ON JOINT LAYOUTS IN PLANS)

- ▨ BR. APPROX. EXP. JOINT STD. XJ-1
- TRANSVERSE EXPANSION JOINTS
- - TRANSVERSE CONTRACTION JOINTS



PLAN AND REINFORCED CONCRETE PAVEMENT SHOWING REINFORCEMENT, LONGITUDINAL AND TRANSVERSE JOINTS