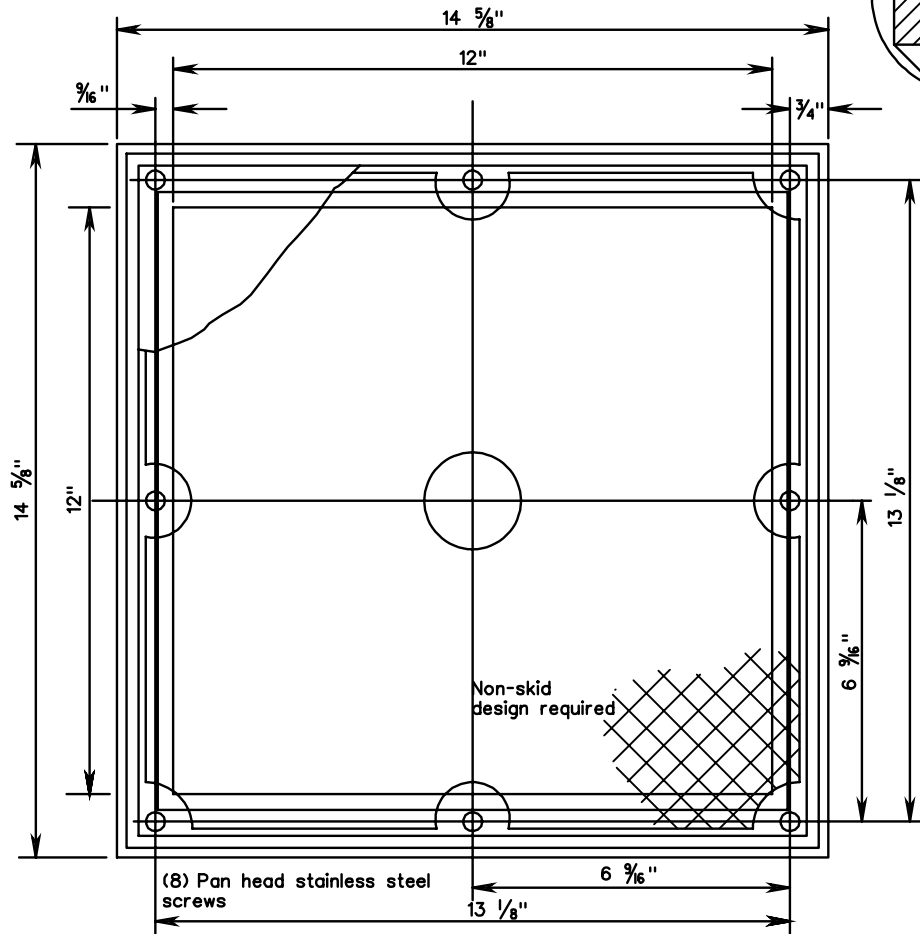
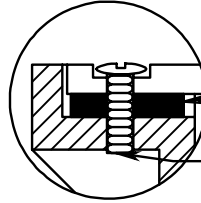


TOP VIEW



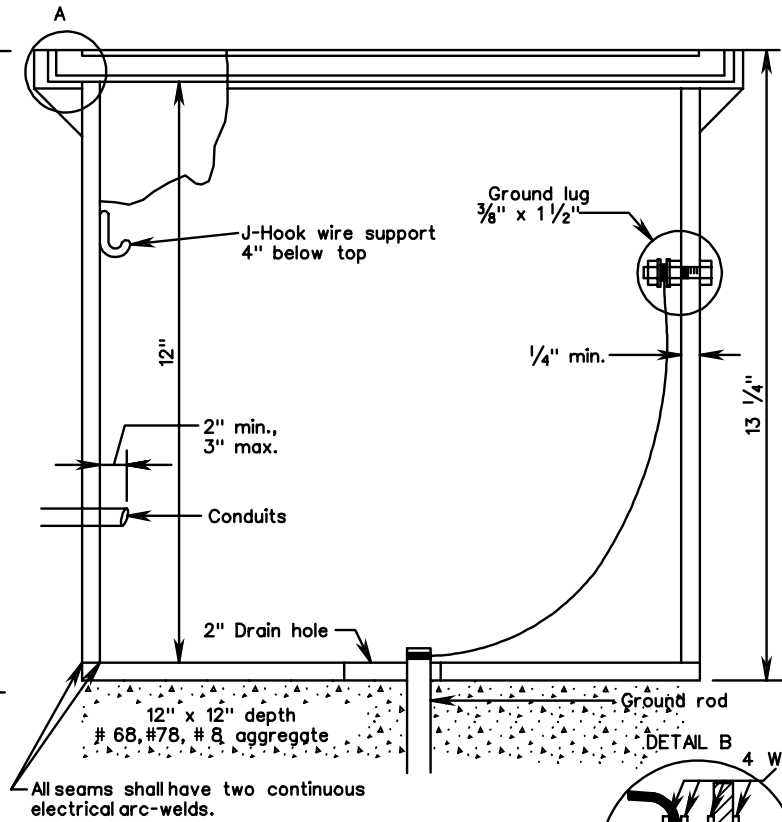
DETAIL A



1/8" Neoprene gasket
 Permanently attached to frame

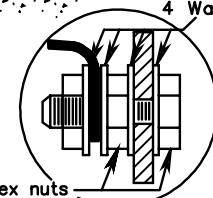
When setting box in concrete, cover
 with set screws shall be in place.

SIDE VIEW



All seams shall have two continuous
 electrical arc-welds.

DETAIL B



4 Washers
 2 Hex nuts
 Grounding lug
 galvanized bolt
 ASTM-A307

Notes:

Finish: Galvanized in accordance with Section 233 and coated (outside) except the cover with an approved mastic.
 Material: Box 1/4" steelplate & cover 1" steelplate ASTM-A36M.

All junction boxes shall be installed with a ground rod unless box houses only communication/interconnect cable.

PVC conduits shall have bell ends and metal conduits shall have grounding bushings on all ends.

Bell ends and bushings shall be plugged to prevent moisture and rodent entry.

Voids resulting from entrance of conduits into junction boxes shall be completely filled with an appropriate material.

JUNCTION BOX