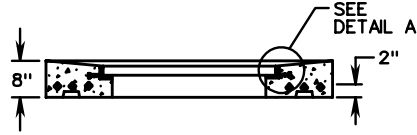
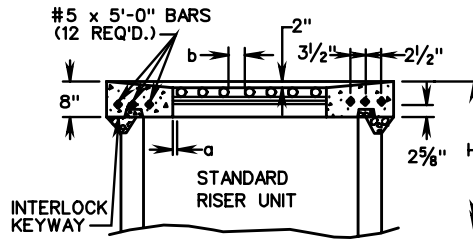


PLAN VIEW

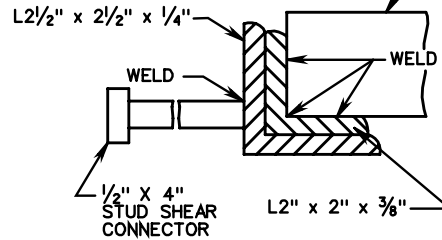


SECTION A-A



SECTION B-B

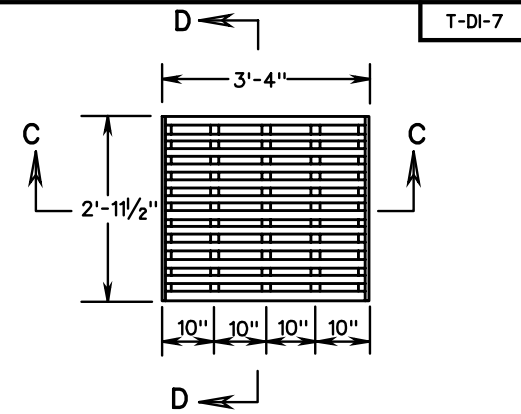
2" DIAMETER BAR @ 10.68 LBS/FT OR  
NO. 14 PLAIN BILLET STEEL BAR  
@ 7.65 LBS/FT (ASTM A-615, GRADE 60)



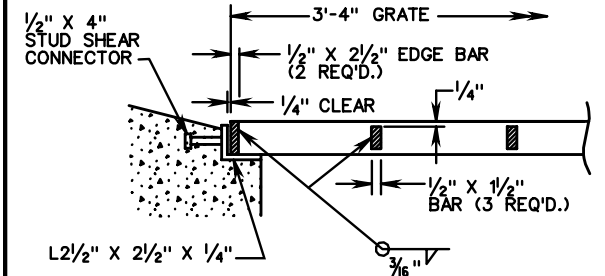
DETAIL A

GRATE A BAR SPACING CHART		
GRATE TYPE	MAXIMUM DIMENSION	
	a	b
A I	1 1/2"	3"
A II	1"	1"

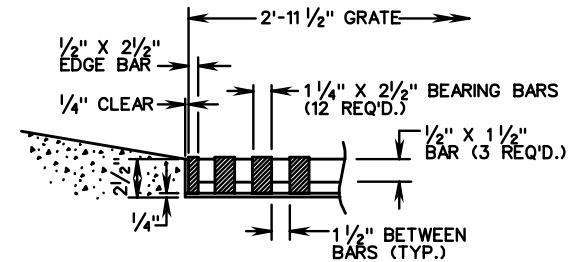
DETAILS OF CONCRETE COVER AND GRATE A



GRATE B



PARTIAL SECTION C-C



PARTIAL SECTION D-D

NOTES:

- GRATE B IS TO BE USED WHEN INLET IS LOCATED ON SHOULDERS OR OTHER AREAS SUBJECT TO TRAFFIC.

DETAILS OF LOAD CARRYING GRATE B

NOTES:

- SEE GENERAL NOTES-PRECAST FOR ADDITIONAL DETAILS.
- CONCRETE COVER AND GRATE ARE TO BE FURNISHED AS A SINGLE UNIT. OUTSIDE DIMENSIONS OF GRATE ARE TO BE 3'-4" X 2'-11 3/4" (GRATE A) OR 3'-4" X 2'-11 1/2" (GRATE B).
- DIMENSIONS SHOWN ARE MINIMUM. ACTUAL DIMENSIONS MAY VARY WITH MANUFACTURER.
- GRATE A IS TO BE USED WHEN INLET IS LOCATED IN MEDIAN OR OTHER AREAS NOT NORMALLY SUBJECT TO TRAFFIC. GRATE B IS TO BE USED WHEN INLET IS LOCATED ON SHOULDERS OR OTHER AREAS SUBJECT TO TRAFFIC.
- ALTERNATE METHODS OF ANCHORING ANGLE IRON WILL BE ACCEPTABLE IF APPROVED BY THE ENGINEER.
- GRATE AND COLLAR ARE TO BE GALVANIZED AFTER FABRICATION.
- JOINTS BETWEEN CONCRETE COVER AND GUTTERS (WHEN REQUIRED) ARE TO BE DOWELED, KEYED, OR OTHER VDOT APPROVED METHODS.
- CONCRETE SHALL BE 4000 PSI MINIMUM.
- REINFORCING STEEL SHALL BE IN ACCORDANCE WITH ASTM A-615.
- GRATE BARS ARE TO BE INSTALLED SO THEY WILL BE ALIGNED PARALLEL TO THE DITCH FLOW.
- SEE STANDARD DI-7, 7A, 7B FOR DETAILS OF GUTTER, METHOD OF PLACEMENT, ALTERNATE METHODS OF CONSTRUCTION.

SPECIFICATION REFERENCE

105  
233  
302

# STANDARD PRECAST TOP UNITS

VIRGINIA DEPARTMENT OF TRANSPORTATION