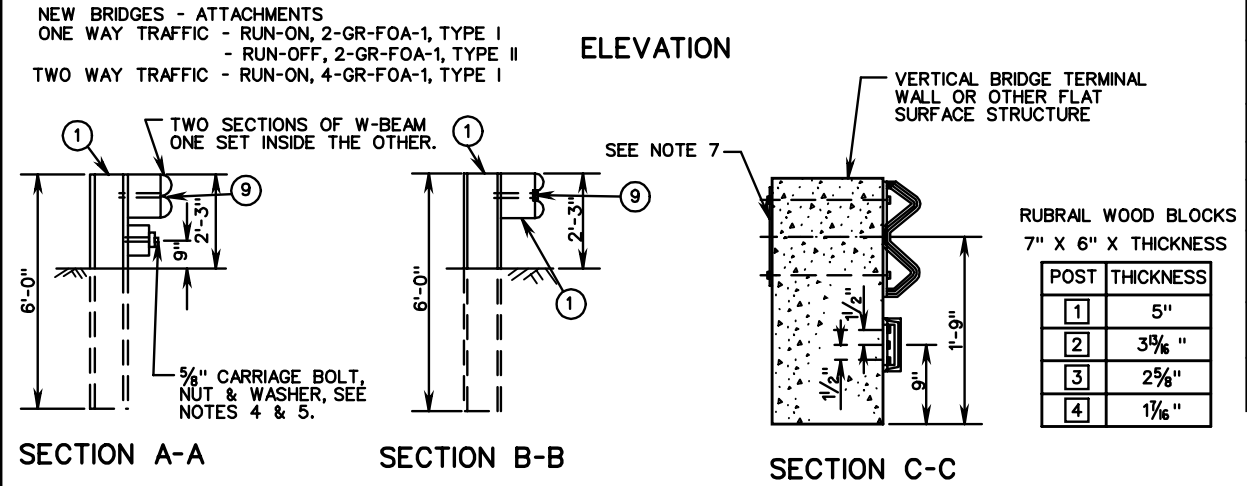


- NOTES:
1. FIXED OBJECTS MAY CONSIST OF BRIDGE RAILS, ABUTMENTS, PIERS, RETAINING WALLS, OR OTHER FLAT SURFACED STRUCTURES WITH VERTICAL FACE.
  2. BRIDGE RAIL ENDS AND BRIDGE PARAPETS MUST BE OF ADEQUATE STRENGTH TO ACCEPT FULL IMPACT LOADING.
  3. GUARDRAIL COMPONENTS SHALL BE IN ACCORDANCE WITH VDOT ROAD AND BRIDGE STANDARDS.
  4. POSTS 1, 2, 3, 4, AND 5 REQUIRE AN ADDITIONAL HOLE TO ATTACH BLOCKS AND/OR RUBRAIL RUBRAIL IS NOT BOLTED TO POSTS 2 AND 4.
  5. BOTTOM WOOD BLOCKS LOCATED ON POSTS 1 THROUGH 4 ARE CENTER DRILLED AND SECURED WITH 5/8" CARRIAGE BOLTS. (LENGTH AS REQUIRED).
  6. W-BEAM IS NOT BOLTED TO POST AT POSTS 2, 3, 6, AND 8; BOLT BLOCK DIRECTLY TO POST.
  7. APPROPRIATE LENGTH 7/8" DIAMETER ASTM A325 HEX BOLTS MUST BE USED WITH THRU DRILLED HOLES WITH A 5/8" BEARING PLATE ON THE BACK SIDE OF THE BRIDGE PARAPET OR TERMINAL WALL.



ITEM	MATERIAL/SPECIFICATIONS/NOTES
1	ST'D. W6X8.5 OR W6X9 STEEL POST ST'D. 6X8X14" LG. TREATED PINE BLOCK OR RECYCLED MATERIAL
2	STANDARD W-BEAM TERMINAL CONNECTOR
3	STANDARD W-BEAM RAIL
4	5/8" X 2" LONG GUARDRAIL BOLT & RECESSED NUT (SEE STANDARD GR-HDW)
5	RECTANGULAR PLATE WASHER (SEE ST'D. GR-HDW) 5/8" X 10" LONG HEX BOLT WITH NUT
6	BENT PLATE RUBRAIL (SEE SHEET 3 OF 3)
7	C6 X 8.2 RUBRAIL (SEE SHEET 3 OF 3)

SPECIFICATION REFERENCE	<b>W-BEAM GUARDRAIL-FIXED OBJECT ATTACHMENT</b>
505	<b>FOR USE BETWEEN VERTICAL FIXED OBJECTS AND GUARDRAIL (STEEL POSTS)</b>
VIRGINIA DEPARTMENT OF TRANSPORTATION	
501.26	