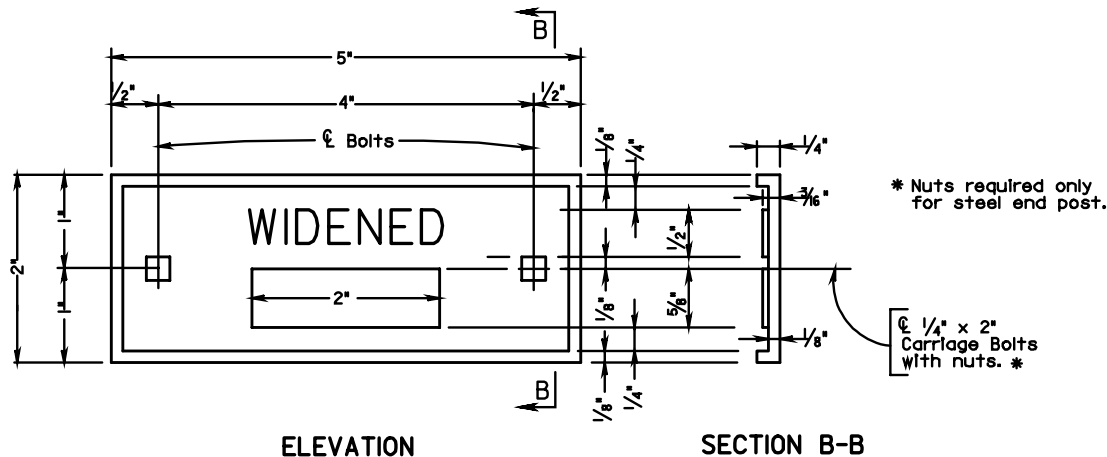


ELEVATION

SECTION A-A

PLATE A

Scale: 1/2" = 1'-0"



ELEVATION

SECTION B-B

PLATE B

Scale: 1/2" = 1'-0"

NOTE:  
 Date Plates A & B shall be bronze.  
 All raised surfaces shall have a bright finish.  
 Date Built and Structure Number to be stamped on plates with a 1/2" steel numbering stamp by state personnel.  
 Carriage bolts and nuts may be bronze or stainless steel.

\* Nuts required only for steel end post.

1/4" x 2" Carriage Bolts with nuts. \*