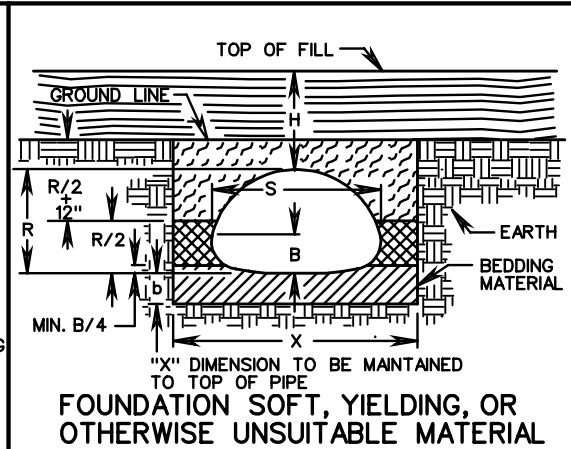
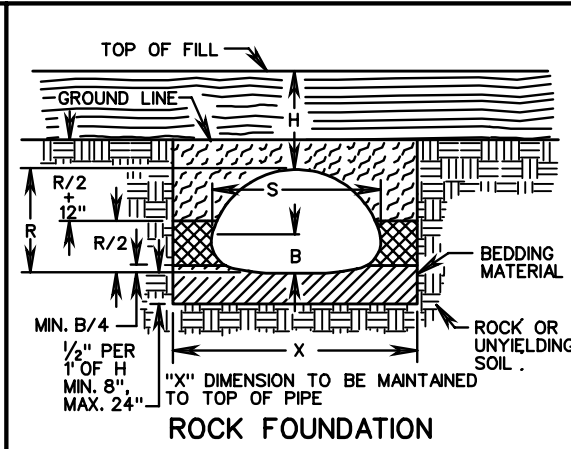
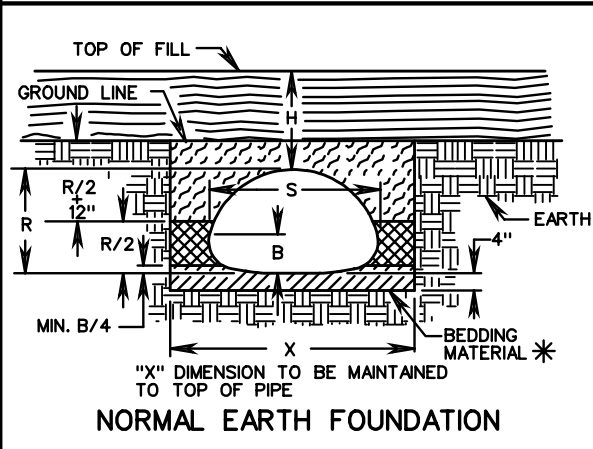
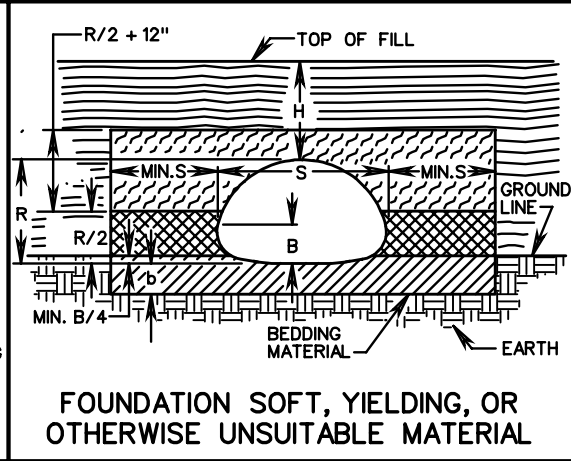
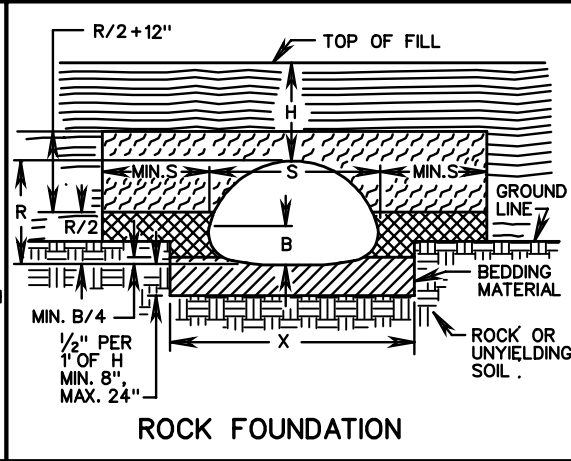
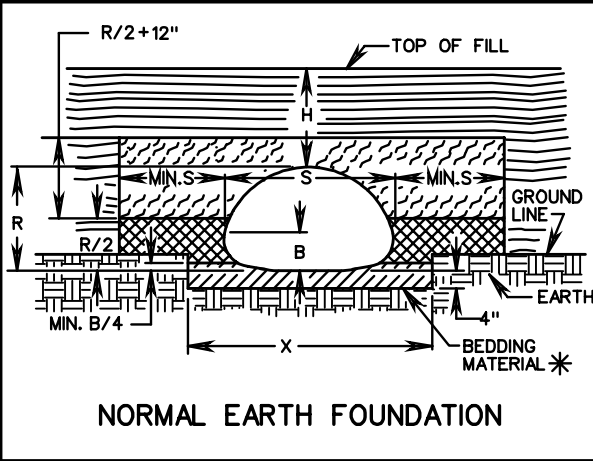


NO PROJECTION OF PIPE ARCH ABOVE GROUND LINE

PB-1





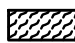

PIPE ARCH PROJECTION ABOVE GROUND LINE



SPANS (S) LESS THAN 36"  
 $X = S + 24"$   
 SPANS (S) GREATER THAN 36"  
 $X = S + 36"$

\* MAY BE ELIMINATED UNDER ENTRANCE PIPE WHERE DIRECTED BY THE ENGINEER.

H - HEIGHT OF COVER MEASURED FROM TOP OF DRAINAGE STRUCTURE TO FINISHED GRADE.  
 S - SPAN  
 R - RISE  
 B - SEE STANDARD PC-1 FOR SPECIFIC PIPE MATERIAL.  
 b - DEPTH AS SHOWN ON PLANS OR TO FIRM BEARING SOIL.

-  BEDDING MATERIAL IN ACCORDANCE WITH SECTION 302 OF THE ROAD AND BRIDGE SPECIFICATIONS.
-  CLASS I BACKFILL MATERIAL IN ACCORDANCE WITH SECTION 302 OF THE ROAD AND BRIDGE SPECIFICATIONS.
-  CLASS II BACKFILL MATERIAL IN ACCORDANCE WITH SECTION 302 OF THE ROAD AND BRIDGE SPECIFICATIONS.
-  EMBANKMENT

Sheet 3 of 4

SPECIFICATION REFERENCE
302
303

**INSTALLATION OF PIPE CULVERTS AND STORM SEWERS  
 PIPE ARCH BEDDING AND BACKFILL**

VIRGINIA DEPARTMENT OF TRANSPORTATION

107.03