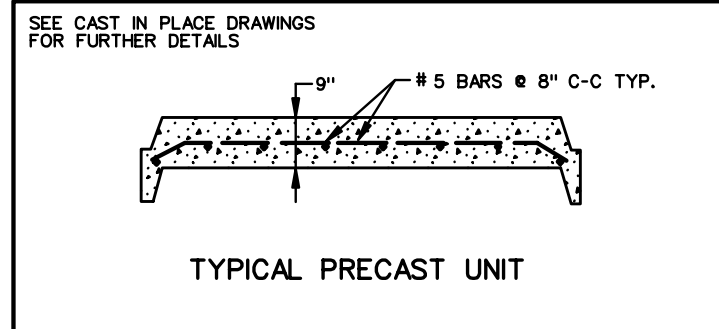


NOTES:

1. STANDARD SL-1, MANHOLE SAFETY SLABS, SHOULD BE REQUIRED AS PART OF THE DRAINAGE DESIGN FOR MANHOLES, JUNCTION BOXES AND DROP INLETS WITH HEIGHTS GREATER THAN 12 FEET. THE SPACING OF ADJACENT SAFETY SLABS SHOULD BE 8' TO 12' WITH NO SAFETY SLAB LOCATED WITHIN 6 FEET OF THE TOP OR BOTTOM OF THE STRUCTURE.
2. THE COST OF THE SL-1 IS INCLUDED IN THE STRUCTURE. THE DRAINAGE DESCRIPTIONS SHOULD BE USED TO SPECIFY HOW MANY SAFETY SLABS ARE NEEDED FOR EACH STRUCTURE AND THE QUANTITY SHOULD BE NOTED IN THE REMARKS COLUMN ON THE DRAINAGE SUMMARY. NO ADDITIONAL COMPENSATION WILL BE PROVIDED FOR ADDITIONAL SAFETY SLABS REQUIRED WHEN PRECAST STRUCTURES ARE SUBSTITUTED FOR CAST-IN-PLACE STRUCTURES.
3. ACCESS OPENINGS ARE TO BE STAGGERED FROM ONE SIDE OF STRUCTURE TO THE OTHER WHERE APPLICABLE. STEPS ARE TO BE STAGGERED ACCORDINGLY.
4. SAFETY SLAB MAY BE CAST-IN-PLACE OR PRECAST. CAST-IN-PLACE CONCRETE TO BE CLASS A3 (3000 PSI). PRECAST CONCRETE IS TO BE A4 (4000 PSI). REINFORCING STEEL TO BE IN ACCORDANCE WITH AASHTO M31.
5. ACCESS OPENINGS MAY BE 30" DIAMETER OR 30" SQUARE. WHEN STRUCTURE WIDTH IS LESS THAN 30" THE ACCESS OPENING SHALL BE RECTANGULAR (STRUCTURE WIDTH BY 30" LONG).



SPECIFICATION REFERENCE
302

TYPICAL CONCRETE SAFETY SLAB FOR DROP INLETS, MANHOLES AND JUNCTION BOXES

VIRGINIA DEPARTMENT OF TRANSPORTATION