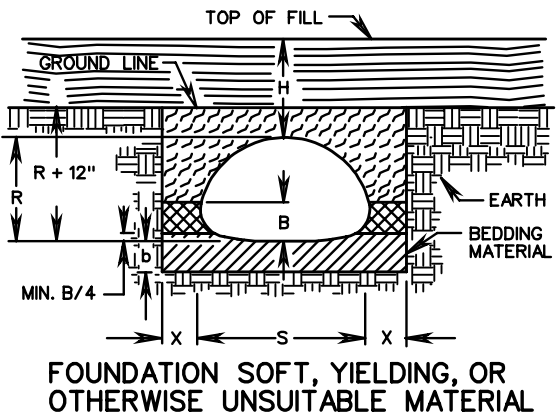
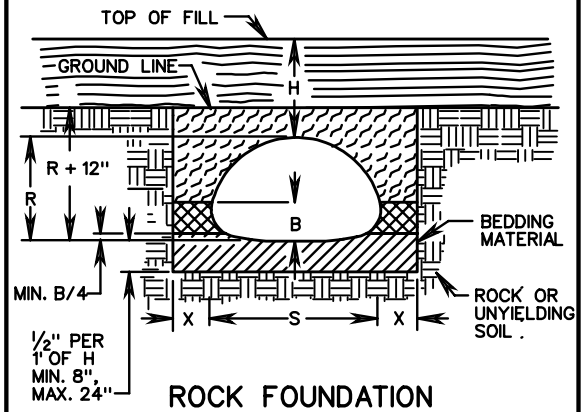
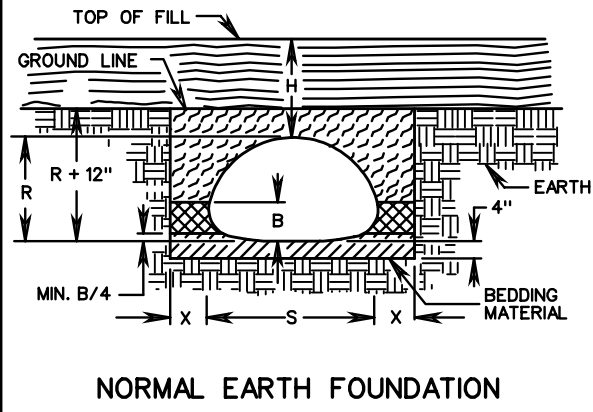
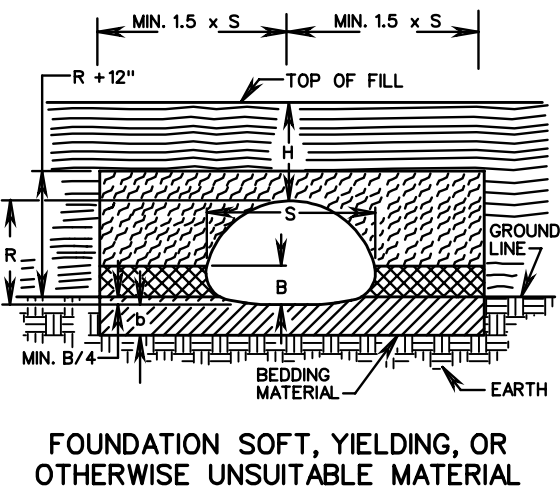
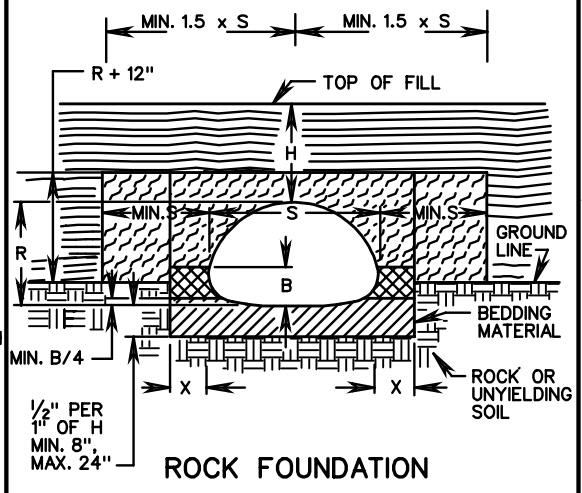
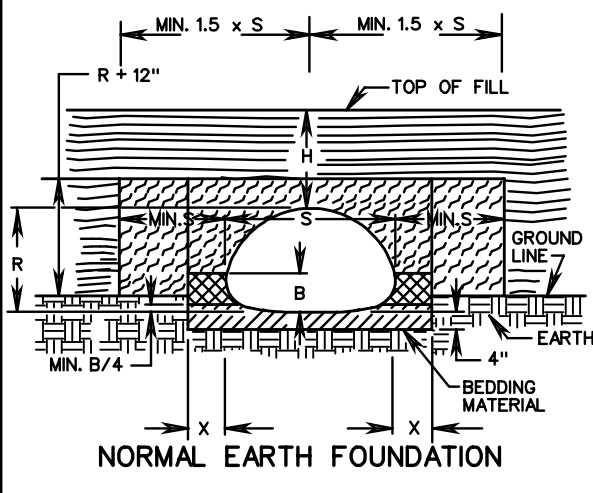




NO PROJECTION OF PIPE ARCH ABOVE GROUND LINE



PB-1



PIPE ARCH PROJECTION ABOVE GROUND LINE



-  BEDDING MATERIAL IN ACCORDANCE WITH SECTION 302 OF THE ROAD AND BRIDGE SPECIFICATIONS.
-  CLASS I BACKFILL MATERIAL IN ACCORDANCE WITH SECTION 302 OF THE ROAD AND BRIDGE SPECIFICATIONS.

-  REGULAR BACKFILL MATERIAL IN ACCORDANCE WITH SECTION 302 OF THE ROAD AND BRIDGE SPECIFICATIONS.
-  EMBANKMENT

**NOTE:** FOR GENERAL NOTES ON PIPE BEDDING, SEE INSTALLATION OF PIPE CULVERTS AND STORM SEWERS GENERAL NOTES ON SHEET 107.00.

SHEET 3 of 4

SPECIFICATION REFERENCE
302
303

**INSTALLATION OF PIPE CULVERTS AND STORM SEWERS  
PIPE ARCH BEDDING AND BACKFILL**

VIRGINIA DEPARTMENT OF TRANSPORTATION

REV. 7/05

107.03