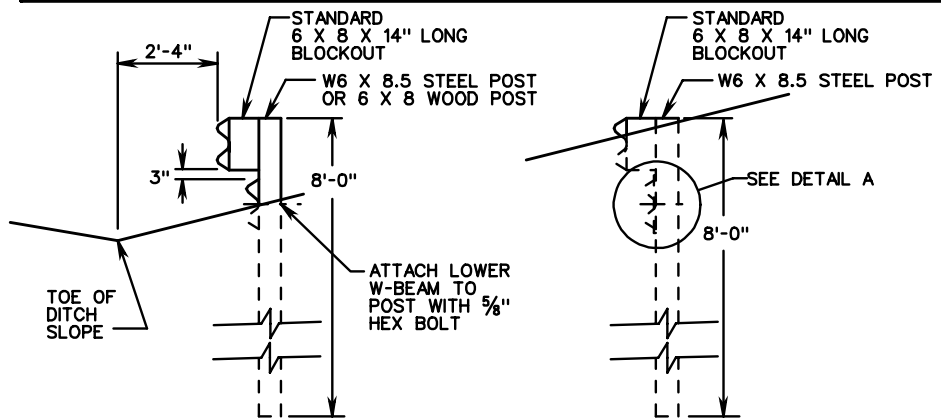
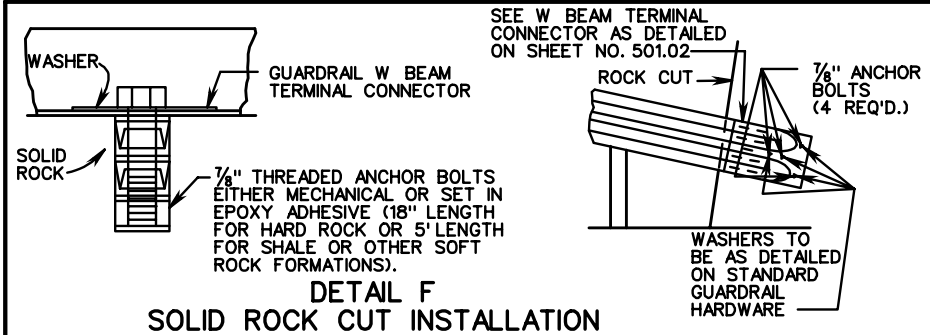


**DETAIL D**  
1/2" THICK STEEL PLATE

**NOTE:**

1. 1/2" STEEL PLATE MAY BE WELDED OR BOLTED TO POST. IF PLATE IS BOLTED TO POST USE 4 - 5/8" X 1 1/2" LG. HEX HEAD BOLTS W/ HEX NUTS. IF PLATE IS WELDED TO POST DO NOT DRILL 7/8" HOLES IN PLATE OR IN POST FLANGES.
2. CONCRETE END ANCHORAGE MAY BE USED IN PLACE OF STEEL POST AT 8'-0" OFFSET.



SECTION D-D

SECTION E-E

SPECIFICATION REFERENCE

505  
221

# TERMINAL TREATMENT FOR W BEAM GUARDRAIL

VIRGINIA DEPARTMENT OF TRANSPORTATION

REV. 7/01

501.10