

Notes:

This standard is applicable for all electrical services other than 480Y/277. For 480Y/277 service, see standard SE-9.

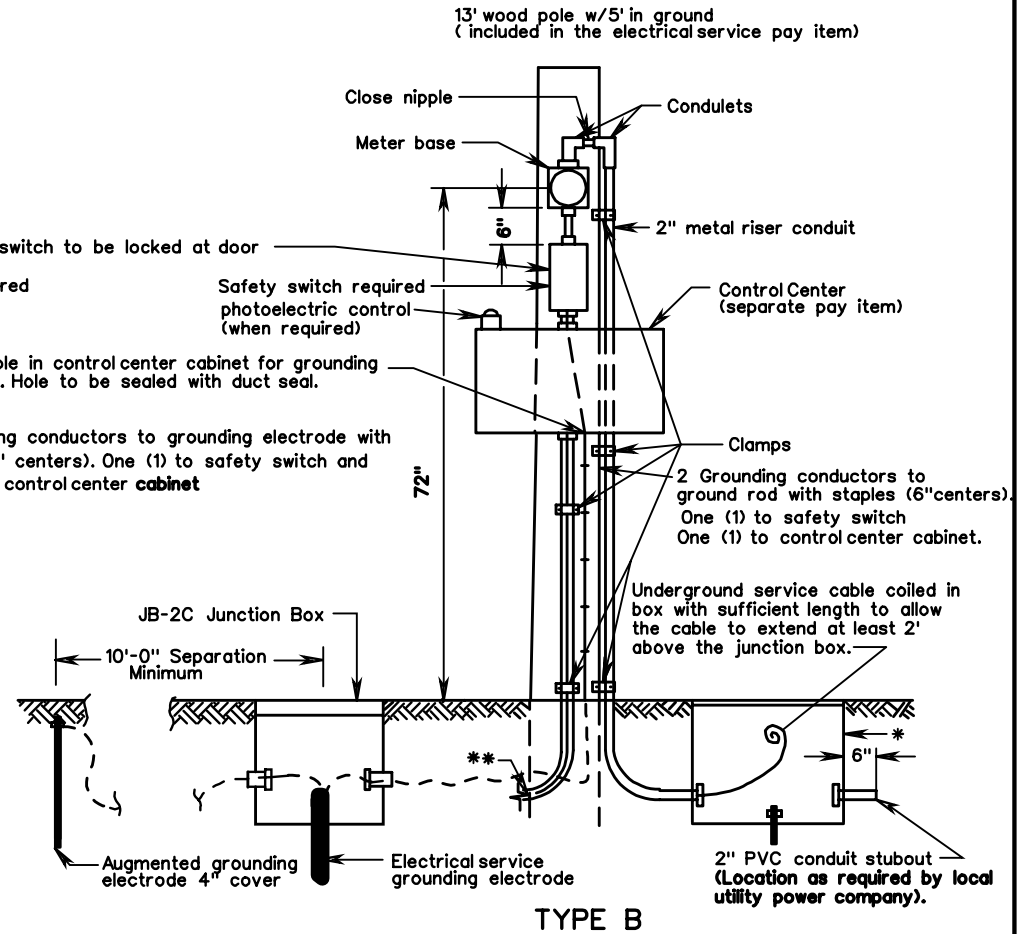
No other conductors shall be run in the same conduit with electrical service cable.

When 200 amp or greater service is required, service shall enter meter base at right bottom.

For underground service installations, local power utility company will install service power utility cable from their power source to the junction box and make required splices to the service cable coiled in the junction box.

* JB-1A, 1B or 1C junction box Top of junction box shall read "UTILITY".

** The conduit and conductor cable shall be as specified on the plans.



**ELECTRICAL SERVICE DETAILS
SIGN AND LIGHTING INSTALLATION**

VIRGINIA DEPARTMENT OF TRANSPORTATION