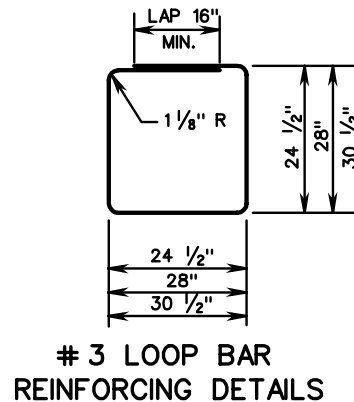
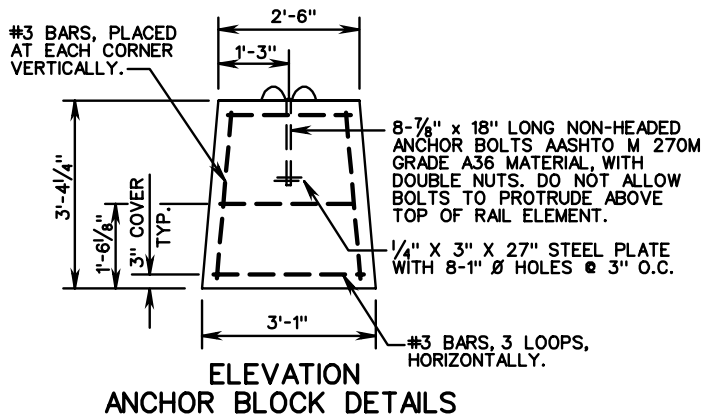
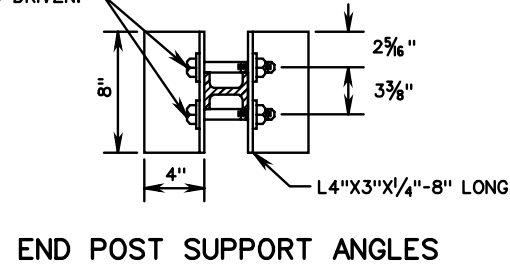
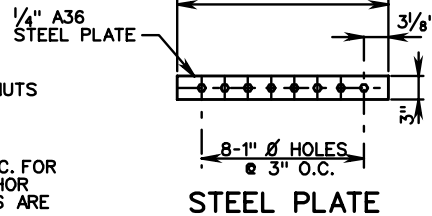
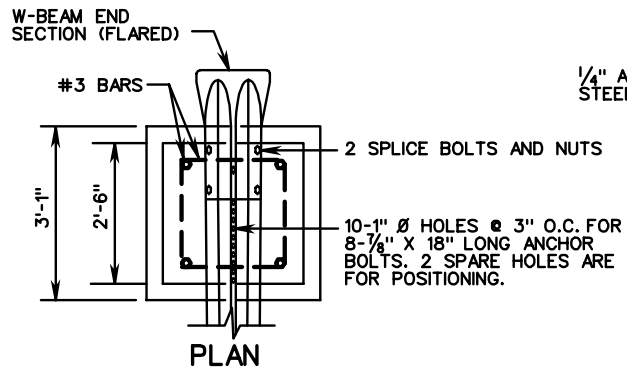


5/8" Ø HOLES FOR 3/4" BOLTS 4 1/2" LONG WITH NUTS AND WASHERS. BOLTS TORQUED TO 100 + 20 FT. LBS. AFTER POST IS DRIVEN.



GR-8 TYPE II TERMINAL TREATMENT (RUN-OFF ANCHORAGE)

STANDARD W BEAM GUARDRAIL (WEAK POST SYSTEM) TL-3 (>45 MPH)