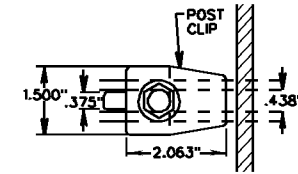
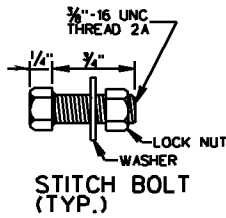
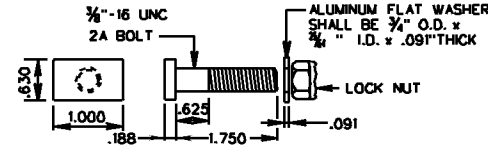


SIGN PANEL ASSEMBLY

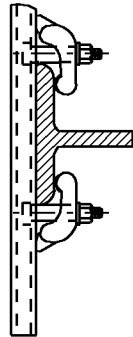


SECTION A-A

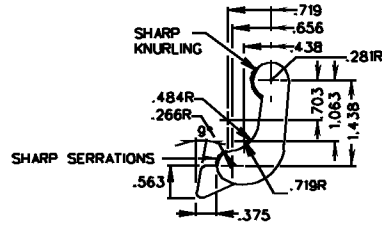
SLOTTED HOLES DRILLED
12" O.C. END HOLES
6" FROM ENDS OF
PANEL. (SEE DETAIL D)



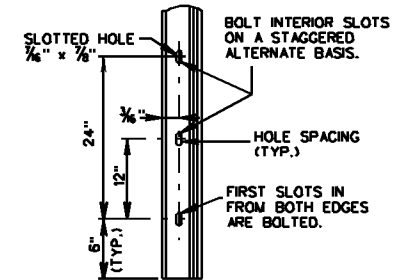
POST CLIP BOLT (TYP.)



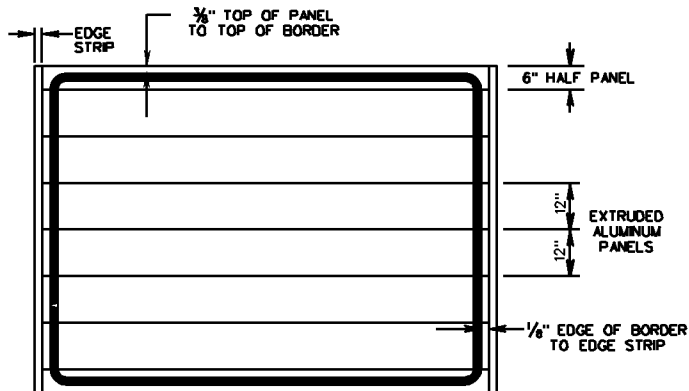
SECTION B-B



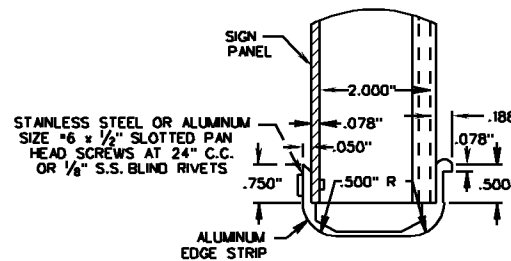
POST CLIP (TYP.)



DETAIL D



BORDER DETAIL



DETAIL OF EDGE STRIP

NOTE:

EDGE STRIP SHALL BE PLACED ON BOTH SIDES OF ALL EXTRUDED PANEL SIGNS.

DOUBLE POST CLIPS SHALL BE INSTALLED ON ALL SIGN HANGERS.

ALL SIGN PANELS INSTALLED ON OVERHEAD SIGN STRUCTURES SHALL BE BOLTED DIRECTLY TO THE SIGN HANGER MEMBERS AT THE BOTTOM AND TOP ROW AND POST CLIPS SHALL BE USED AT ALL OTHER MOUNTING POINTS.



ROAD AND BRIDGE STANDARDS

SHEET 2 OF 2

REVISION DATE

1325.21

4/09

EXTRUDED SIGN PANEL DESIGN

VIRGINIA DEPARTMENT OF TRANSPORTATION

SPECIFICATION REFERENCE

701