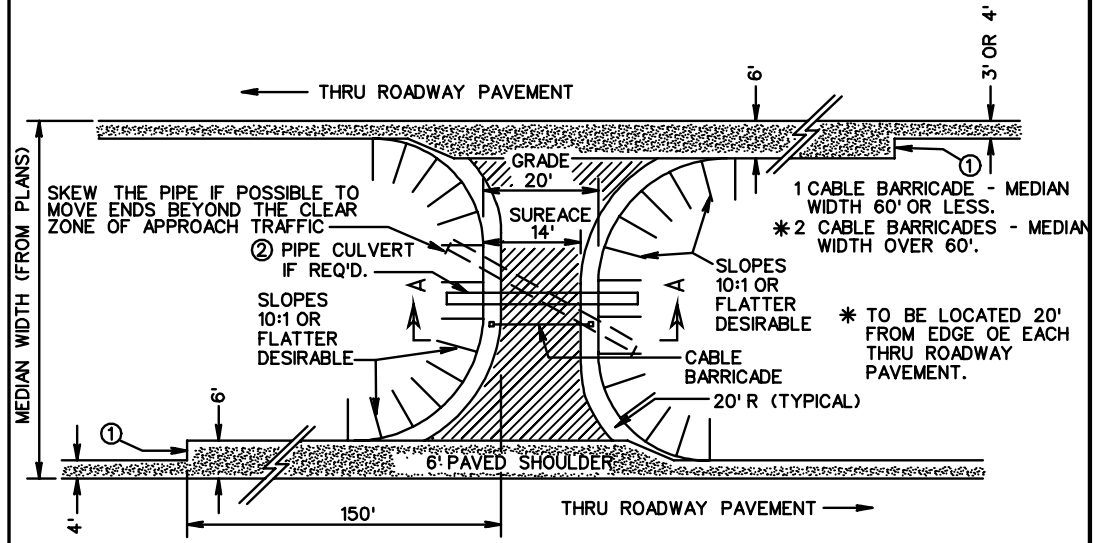
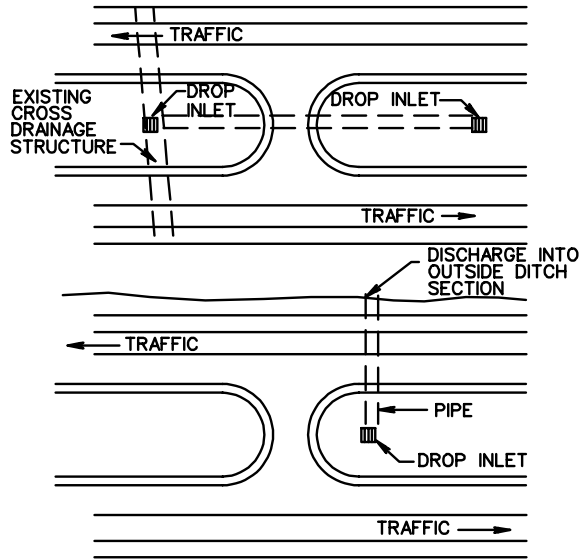


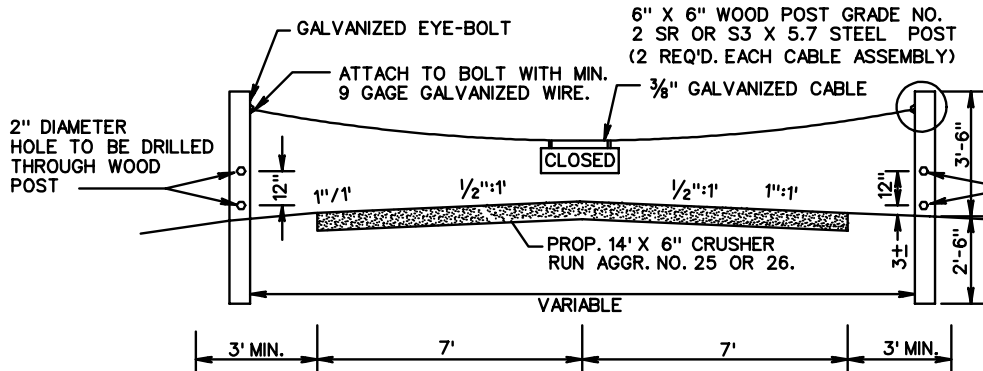
EXAMPLES OF ALTERNATE MEDIAN DRAINAGE

THESE ALTERNATIVES COULD BE CONSIDERED IN LIEU OF A PIPE UNDERNEATH THE MEDIAN CROSSOVER.



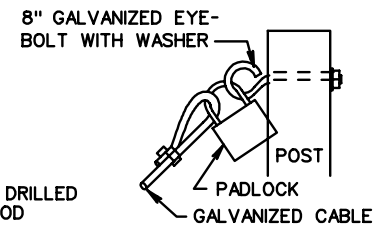
PLAN

- 1 CABLE BARRICADE - MEDIAN WIDTH 60' OR LESS.
- * 2 CABLE BARRICADES - MEDIAN WIDTH OVER 60'.
- * TO BE LOCATED 20' FROM EDGE OF EACH THRU ROADWAY PAVEMENT.
- ① WIDEN PAVED PORTION OF MEDIAN SHOULDER OR 150' TO ACCOMMODATE TURNING VEHICLES.
- ② END TREATMENT AS REQUIRED TO MEET PROPOSED SLOPE.



SECTION A-A

WOOD POSTS TO BE SALT TREATED OR PRIMED AND PAINTED DARK GREEN.



PADLOCK TO BE FURNISHED AND INSTALLED BY STATE FORCES UNLESS OTHERWISE SPECIFIED. CONTRACTOR TO TEMPORARILY ATTACH CABLE TO EYE-BOLT WITH MINIMUM 9 GAUGE GALVANIZED WIRE.

**** SIGN**
 MATERIAL: 0.080" ALUMINUM ALLOY 6061 - T6
 SIZE : 24" X 9"
 COLOR COMBINATION : C-1
 BORDER WIDTH : 1/2"
 MARGIN WIDTH : 1/2"
 CORNER RADII : 1/2"
 LETTER TYPE : L-1 OR L-2
 LETTER HEIGHT AND SERIES : 4" - D
******* IN ACCORDANCE WITH V.D.O.T. "MANUAL OF UNIFORM TRAFFIC CONTROL DEVICES FOR STREETS AND HIGHWAYS".
****** MESSAGE, BOTH SIDES IF ONE CABLE BARRICADE IS USED.
****** MESSAGE, ONE SIDE IF TWO CABLE BARRICADES ARE USED.

VDOT	
ROAD AND BRIDGE STANDARDS	
SHEET 1 OF 1	REVISION DATE
602.03	

**STANDARD MAINTENANCE CROSSOVER
 FOR USE ON FREEWAYS**

VIRGINIA DEPARTMENT OF TRANSPORTATION

SPECIFICATION REFERENCE
505