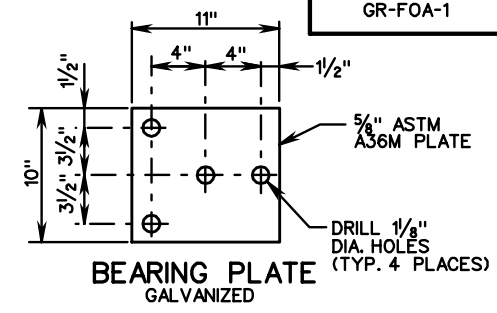


NOTE:  
CAN BE FIELD CUT AND BENT USING HEAT.  
IF SHOP CUT AND BENT, RIGHT HAND OR LEFT  
HAND MUST BE SPECIFIED DEPENDING ON  
WHICH SIDE OF THE ROADWAY THE TRANSITION  
IS USED.

**ITEM 7 DETAIL**



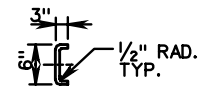
☆ CAN BE FIELD CUT AND BENT USING HEAT.

WOOD POSTS  
RUBRAIL BLOCKOUTS  
7" X 4" X THICKNESS

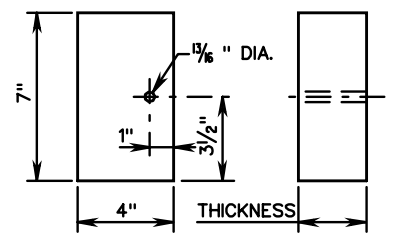
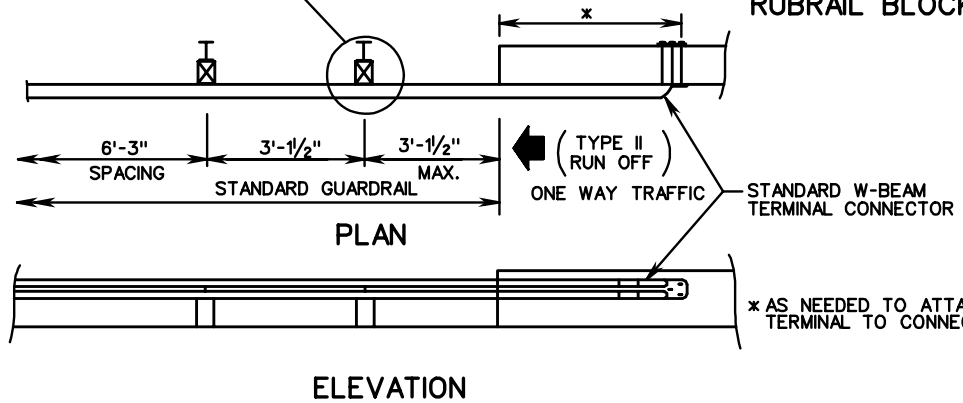
POST	THICKNESS
1	6 5/8"
2	5 1/16"
3	3 3/16"
4	2"

STEEL POSTS  
RUBRAIL BLOCKOUTS  
7" X 4" X THICKNESS

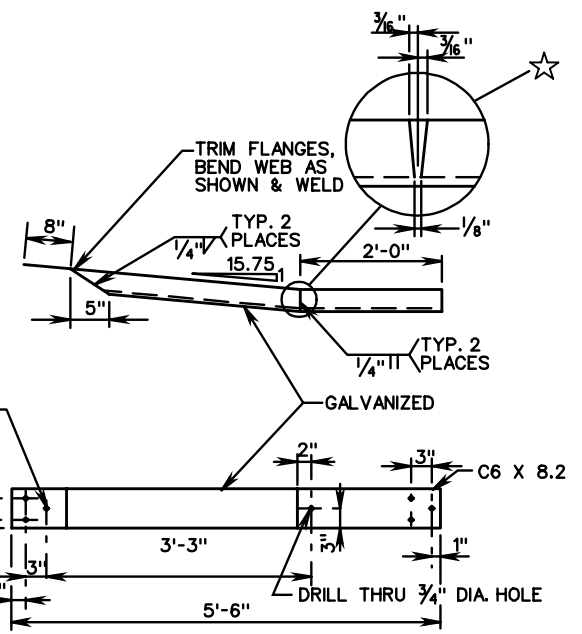
POST	THICKNESS
1	5"
2	3 13/16"
3	2 5/8"
4	1 1/16"



INDICATES EXTRA POST REQ'D. FOR  
RUN-OFF FIXED OBJECT ATTACHMENT  
ST'D. GR-FOA-1 TYPE II



**RUBRAIL BLOCKOUT DETAIL**



**ITEM 8 DETAIL**