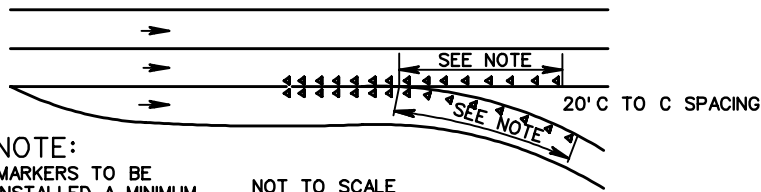
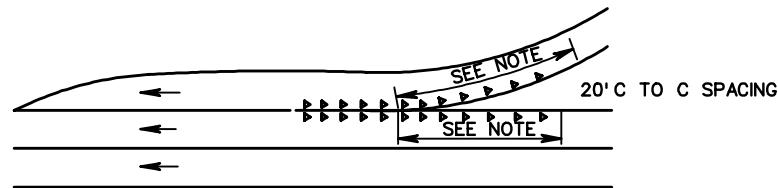


EXIT RAMP



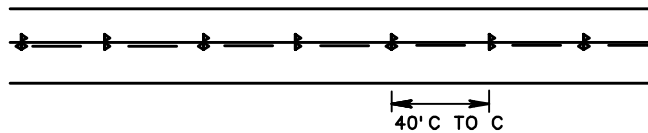
NOTE:
 MARKERS TO BE
 INSTALLED A MINIMUM
 OF 80' BEYOND
 PHYSICAL GORE.
 NOT TO SCALE

ENTRANCE RAMP

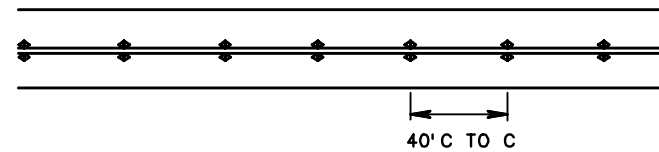


NOTE:
 MARKERS TO BE
 INSTALLED A MINIMUM
 OF 80' BEYOND
 PHYSICAL GORE.
 NOT TO SCALE

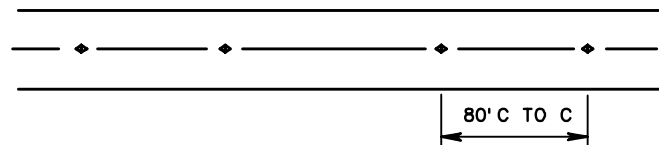
PASSING ONE DIRECTION



NO PASSING



PASSING TWO DIRECTIONS



SPECIFICATION REFERENCE
704

TYPICAL PAVEMENT MARKER
 LOCATION DETAILS
 VIRGINIA DEPARTMENT OF TRANSPORTATION

VDOT ROAD AND BRIDGE STANDARDS	
REVISION DATE	SHEET 1 OF 1
1330.90	