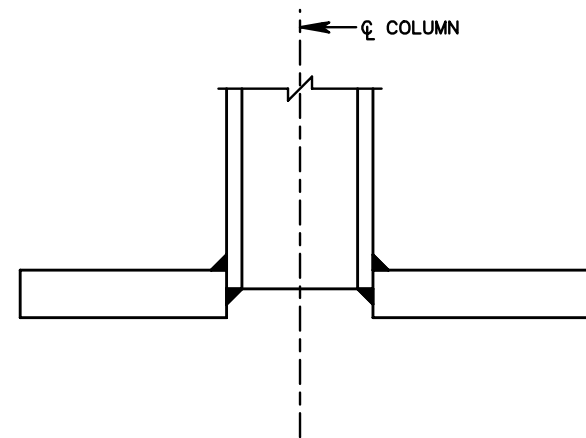


PLAN



ELEVATION

TYPICAL SOCKETED BASE PLATE CONNECTION

NOTES:

1. ALL POLES/UPRIGHTS OF OVERHEAD SIGN STRUCTURES INCLUDING "BUTTERFLY" STRUCTURES SHALL HAVE A MINIMUM OF SIX ANCHOR BOLTS, EACH HAVING A MINIMUM DIAMETER OF 1½".
2. THE MINIMUM BASE PLATE THICKNESS FOR ALL TYPES OF SIGN STRUCTURES SHALL BE 2".
3. ALL END POLE COLUMNS SHALL BE JOINED TO THE BASE PLATE USING A SOCKETED CONNECTION.

SPECIFICATION REFERENCE
700

OVERHEAD SIGN STRUCTURE
SOCKETED BASE PLATE CONNECTION
 VIRGINIA DEPARTMENT OF TRANSPORTATION

VDOT ROAD AND BRIDGE STANDARDS	
REVISION DATE	SHEET 2 OF 7
1324.11	