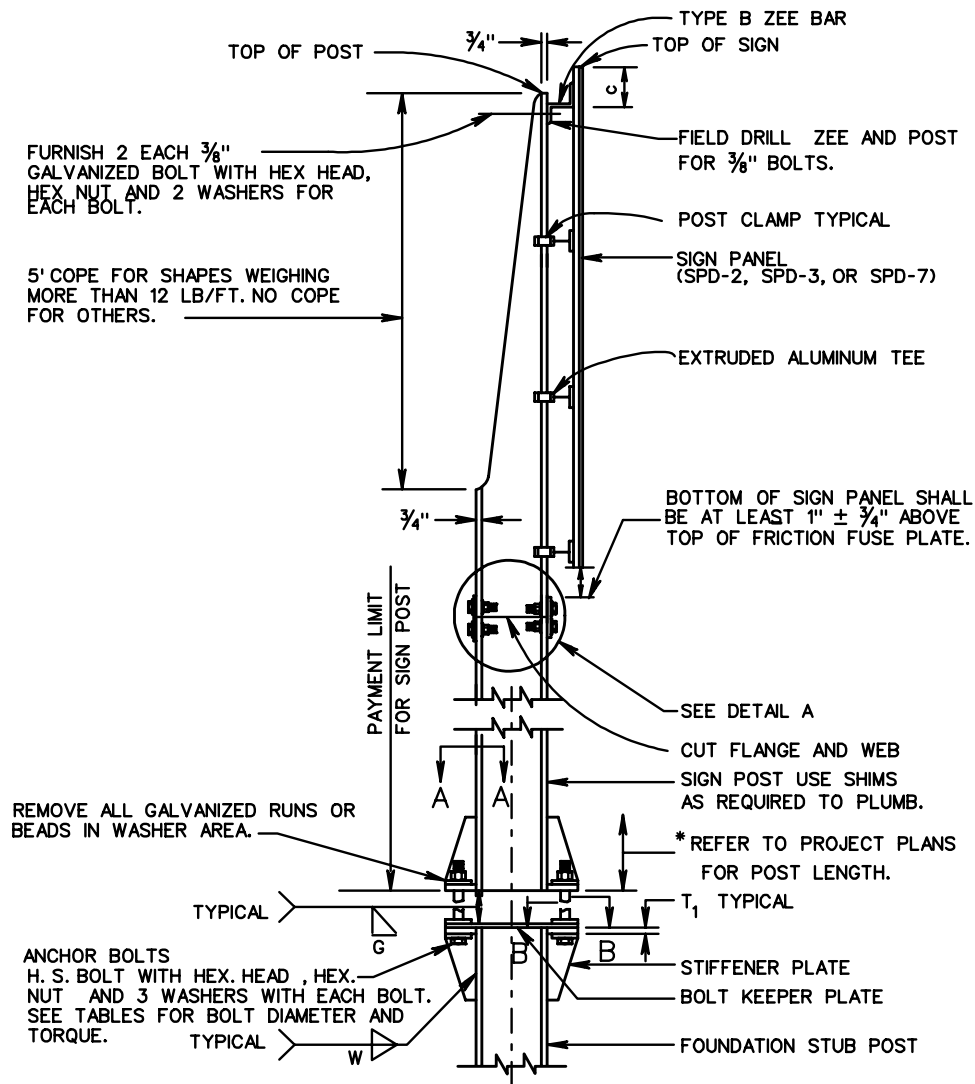


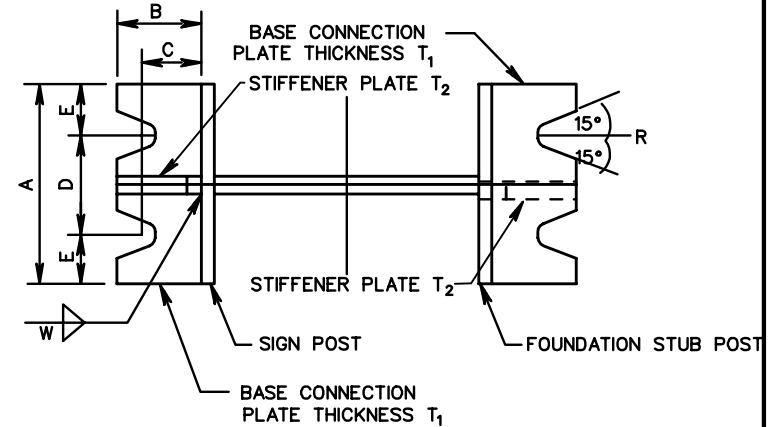
SIGN POST AND FOUNDATION STUB POST ELEVATION



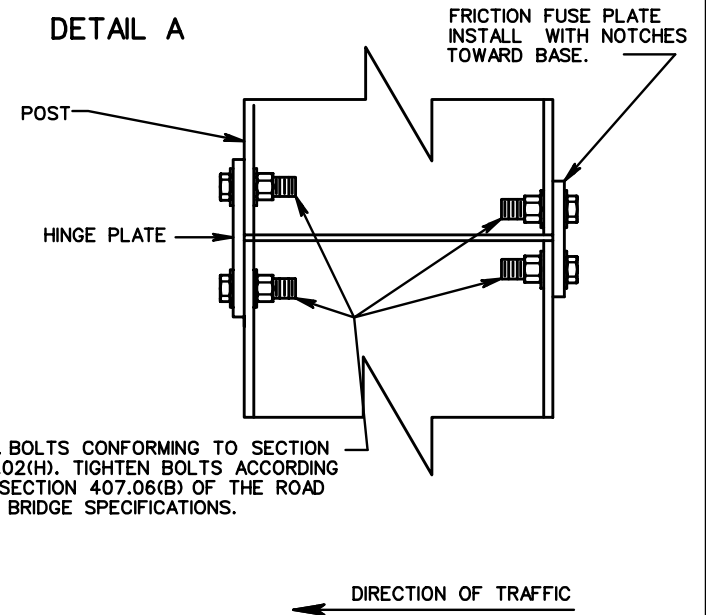
* ALL POST LENGTHS SHALL BE FIELD CHECKED BY CONTRACTOR PRIOR TO FABRICATION.

SECTION A-A

SECTION B-B



DETAIL A



H. S. BOLTS CONFORMING TO SECTION 226.02(H). TIGHTEN BOLTS ACCORDING TO SECTION 407.06(B) OF THE ROAD AND BRIDGE SPECIFICATIONS.

SPECIFICATION REFERENCE

700

INTERSTATE SIGN STRUCTURE
INSTALLATION DETAILS

VIRGINIA DEPARTMENT OF TRANSPORTATION

VDOT

ROAD AND BRIDGE STANDARDS

REVISION DATE

SHEET 2 OF 10

1323.11