

NOTES:

POLE HEIGHT AND SIZE WILL BE AS SPECIFIED IN THE PLANS.

THIS STANDARD IS APPLICABLE FOR ALL ELECTRICAL SERVICES OTHER THAN 480Y/277.

NO OTHER CONDUCTORS SHALL BE RUN IN THE SAME CONDUIT WITH ELECTRICAL SERVICE CABLE.

WHEN 200 AMP OR GREATER SERVICE IS REQUIRED, SERVICE SHALL ENTER METER BASE ACCORDING TO UTILITY COMPANY STANDARD.

LOCAL POWER UTILITY COMPANY WILL INSTALL SERVICE POWER UTILITY CABLE FROM THEIR POWER SOURCE TO THE JUNCTION BOX AND MAKE REQUIRED SPLICES TO THE SERVICE CABLE COILED IN THE JUNCTION BOX.

OPEN ENDS OF CONDUITS WITH CONDUCTORS INSTALLED SHALL BE SEALED WITH AN APPROVED SOFT, PLIABLE, AND EASILY REMOVABLE WATERPROOF SEALANT. THE SEALANT SHALL NOT HAVE A DELETERIOUS EFFECT ON CABLE COVERINGS.

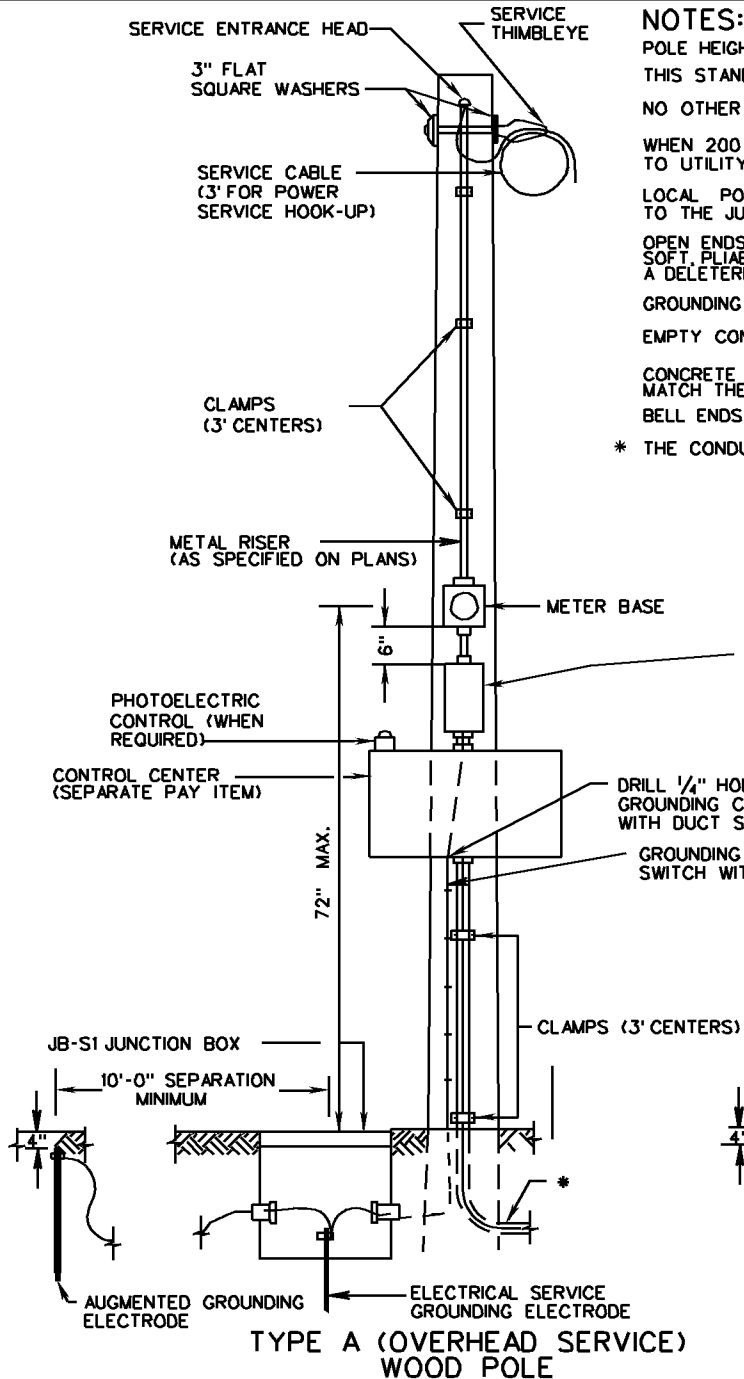
GROUNDING BUSHINGS SHALL BE INSTALLED ON EACH END OF METAL CONDUITS.

EMPTY CONDUITS SHALL BE PLUGGED TO PREVENT MOISTURE AND RODENT ENTRY.

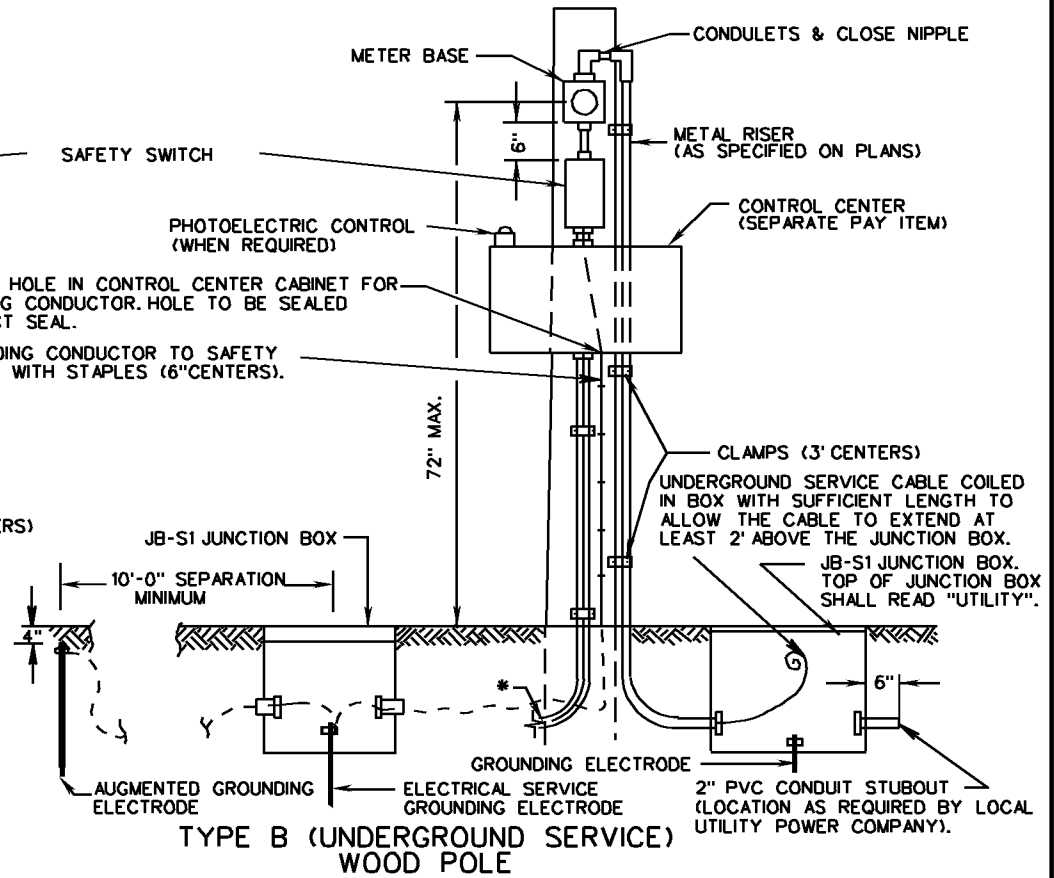
CONCRETE PAD SHALL BE INSTALLED IN FRONT OF CABINET DOORS, SIZED TO MATCH THE FOUNDATION WIDTH, AND SLOPED TO DRAIN (MIN. 20" W BY 36" L, 4" DEPTH)

BELL ENDS SHALL BE INSTALLED ON EACH END OF PVC CONDUITS.

* THE CONDUIT AND CONDUCTOR CABLE SHALL BE AS SPECIFIED ON THE PLANS.



**TYPE A (OVERHEAD SERVICE)
WOOD POLE**



**TYPE B (UNDERGROUND SERVICE)
WOOD POLE**

SPECIFICATION REFERENCE
700

**ELECTRICAL SERVICE
INSTALLATION DETAILS**
VIRGINIA DEPARTMENT OF TRANSPORTATION

VDOT	
ROAD AND BRIDGE STANDARDS	
REVISION DATE	SHEET 1 OF 1
1312.80	