

TYPE A (OVERHEAD SERVICE)
WOOD POLE

NOTES:

NO OTHER CONDUCTORS SHALL BE RUN IN THE SAME CONDUIT WITH ELECTRICAL SERVICE CABLE.

LOCAL POWER UTILITY COMPANY WILL INSTALL SERVICE POWER UTILITY CABLE FROM THEIR POWER SOURCE TO THE JUNCTION BOX AND MAKE REQUIRED SPLICES TO THE SERVICE CABLE COILED IN THE JUNCTION BOX.

CONCRETE PAD SHALL BE INSTALLED IN FRONT OF CABINET DOORS, SIZED TO MATCH THE FOUNDATION WIDTH, AND SLOPED TO DRAIN (MIN. 20" W BY 36" L, 4" DEPTH)

GROUNDING BUSHINGS SHALL BE INSTALLED ON EACH END OF METAL CONDUITS.

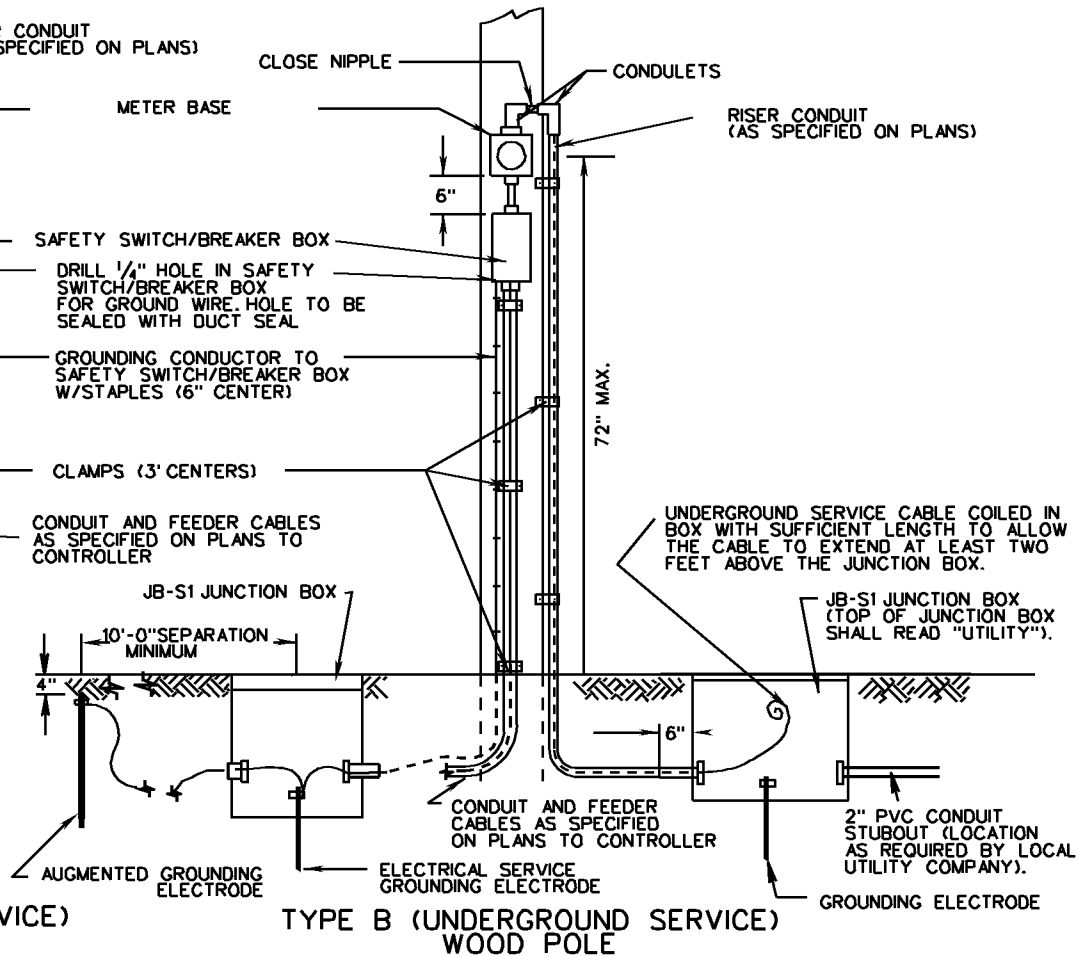
EMPTY CONDUITS SHALL BE PLUGGED TO PREVENT MOISTURE AND RODENT ENTRY.

OPEN ENDS OF CONDUITS WITH CONDUCTORS INSTALLED SHALL BE SEALED WITH AN APPROVED SOFT, PLIABLE, AND EASILY REMOVABLE WATERPROOF SEALANT. THE SEALANT SHALL NOT HAVE A DELETERIOUS EFFECT ON CABLE COVERINGS.

BELL ENDS SHALL BE INSTALLED ON EACH END OF PVC CONDUITS.

HEIGHT AND SIZE OF POLE WILL BE AS SPECIFIED ON THE PLANS.

THIS STANDARD IS APPLICABLE FOR ALL ELECTRICAL SERVICES OTHER THAN 480Y/277.



TYPE B (UNDERGROUND SERVICE)
WOOD POLE

SPECIFICATION REFERENCE
700

**ELECTRICAL SERVICE
INSTALLATION DETAILS**
VIRGINIA DEPARTMENT OF TRANSPORTATION

VDOT	
ROAD AND BRIDGE STANDARDS	
REVISION DATE	SHEET 1 OF 1
	1312.40