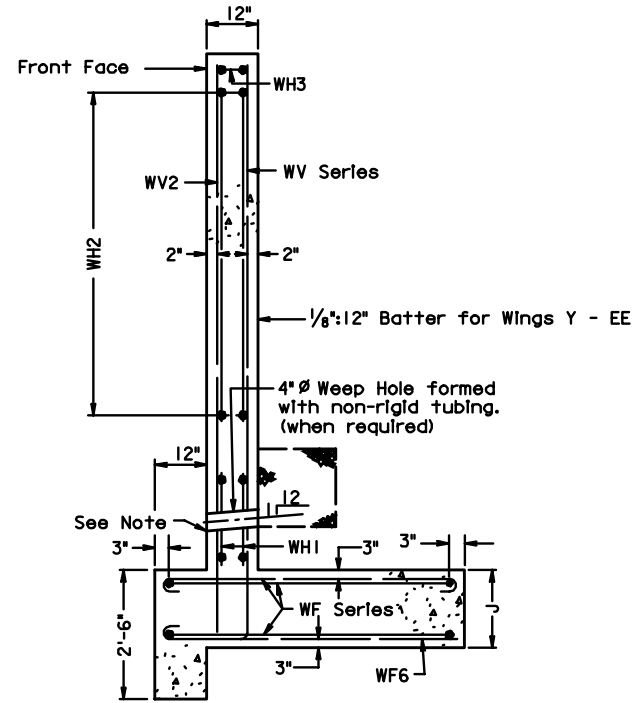
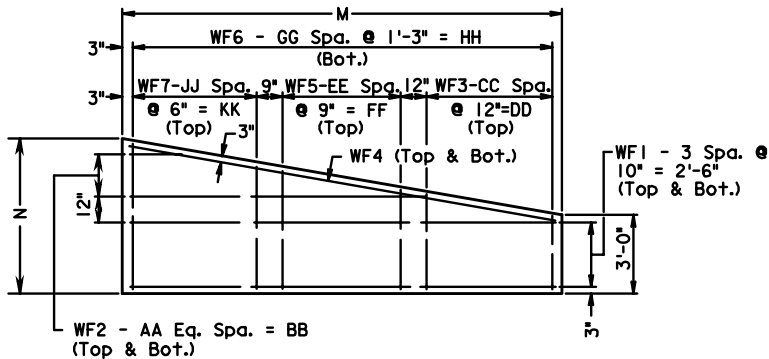


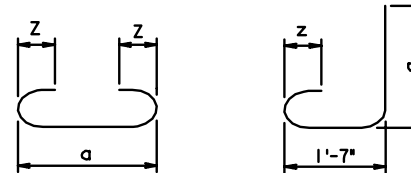
FRONT ELEVATION



END VIEW



FOOTING PLAN



WF3, WF5, WF7

WV1, WV3, WV4

| TABLE B | | |
|----------|----------|---------|
| Bar Size | Pin Dia. | Z |
| *3 | 2 1/4" | 4" |
| *4 | 3" | 4 1/2" |
| *5 | 3 3/4" | 5" |
| *6 | 4 1/2" | 6" |
| *7 | 5 1/4" | 7" |
| *8 | 6" | 8" |
| *9 | 9" | 10 1/8" |

| TABLE C | |
|----------|---------------|
| Bar Size | Splice Length |
| *4 | 1'-4" |
| *5 | 1'-8" |
| *6 | 1'-11" |
| *7 | 2'-4" |
| *8 | 3'-1" |
| *9 | 3'-11" |



ROAD AND BRIDGE STANDARDS

SHEET 1 OF 7

REVISION DATE

1006.15

WING DETAILS

2:1 FILL SLOPE - TYPE I

VIRGINIA DEPARTMENT OF TRANSPORTATION

SPECIFICATION REFERENCE