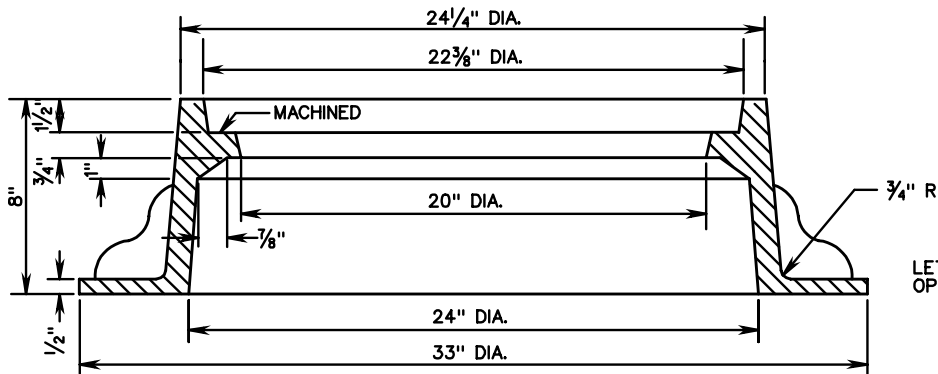
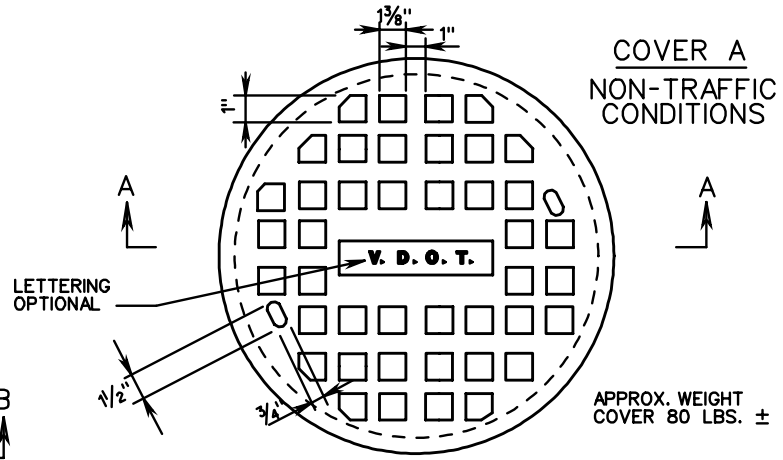


PLAN



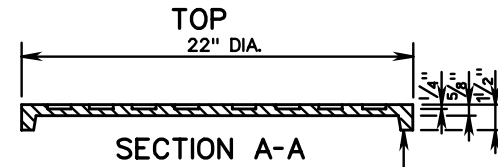
FRAME

EITHER COVER A OR B MAY BE USED WITH FRAME.
APPROX. WEIGHT COVER 170 LBS. ±

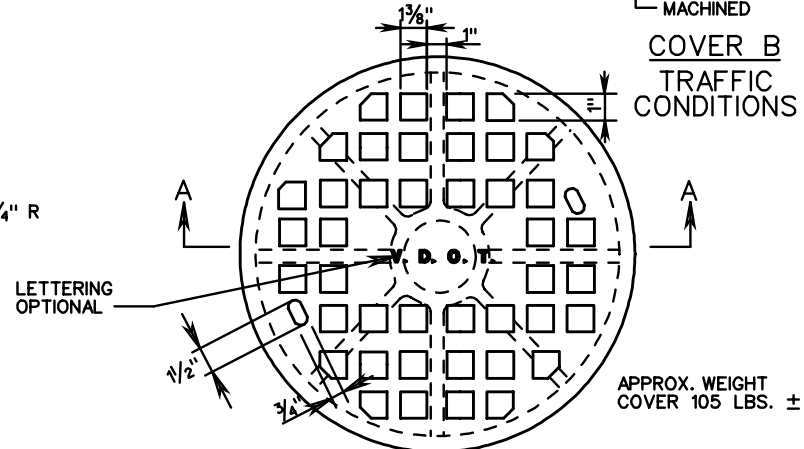


COVER A
NON-TRAFFIC
CONDITIONS

APPROX. WEIGHT COVER 80 LBS. ±

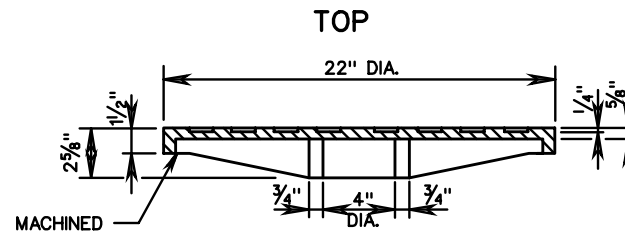


SECTION A-A



COVER B
TRAFFIC
CONDITIONS

APPROX. WEIGHT COVER 105 LBS. ±



SECTION A-A



ROAD AND BRIDGE STANDARDS

STANDARD MANHOLE FRAME AND COVER

SPECIFICATION
REFERENCE

SHEET 4 OF 5

REVISION DATE

VIRGINIA DEPARTMENT OF TRANSPORTATION

106.04

224
302