

NOT TO SCALE

ANCHOR BOLT LAYOUT/FOUNDATION

NOTES:

ANCHOR BOLTS SHALL HAVE A THREADED PLATE OR A PLATE WITH NUT AND WASHER ON THE END OF BOLT EMBEDDED IN FOUNDATION.

ANCHOR BOLT LAYOUT SHALL BE CHECKED AGAINST LATEST APPROVED STRUCTURE DRAWINGS. WHEN EIGHT ANCHOR BOLTS ARE REQUIRED, MINIMUM OF 5'-0" AND 7'-6" EMBEDMENT LENGTHS SHALL BE USED ALTERNATING IN BOLT CIRCLE.

MINIMUM REINFORCEMENT SHOWN, DESIGNER SHALL VERIFY.

ALL CONDUITS AS SPECIFIED ON PLANS. IN ADDITION 1" CONDUIT REQUIRED FOR GROUNDING CONDUCTOR, 2 - 2" PVC CONDUITS REQUIRED FOR FUTURE USE. NOTE THAT ADDITIONAL SPARE CONDUITS MAY BE REQUIRED BY PLANS.

BOLT PROJECTION AS REQUIRED BY SIGNAL POLE MANUFACTURER; HOWEVER, DISTANCE BETWEEN BOTTOM OF BASE PLATE AND TOP OF PEDESTAL SHALL BE NO GREATER THAN THE DIAMETER OF ANCHOR BOLT PLUS ONE INCH.

SQUARE OR HEX NUTS UNDER BASE SERVE AS A MEANS OF LEVELING OR RAKING POLE.

WINGS SHALL BE USED FOR TORSIONAL RESISTANCE.

ANCHOR BOLTS AND BOLT PATTERN SHALL BE FURNISHED WITH POLE. POLE SHALL BE CENTERED ON FOUNDATION.

EACH FOUNDATION SHALL BE PERMANENTLY MARKED TO INDICATE ALL SIDES FROM WHICH CONDUITS PASS. THIS MARK SHALL BE MADE WITH A TROWEL WHEN FINISHING THE CONCRETE AND SHALL BE 1/4" DEEP AND 4" TO 6" LONG. LOCATIONS OF EMPTY CONDUITS SHALL HAVE AN ADDITIONAL 2" LONG MARK MADE PERPENDICULAR TO AND CENTERED ON THIS MARKING.

WHEN FOUNDATION EXTENDS 4" ABOVE FINISHED GRADE ALL EDGES SHALL BE CHAMFERED 3/4" AND FOR SIDEWALKS SHALL BE FLUSH.

GROUNDING BUSHINGS SHALL BE INSTALLED ON EACH END OF METAL CONDUITS.

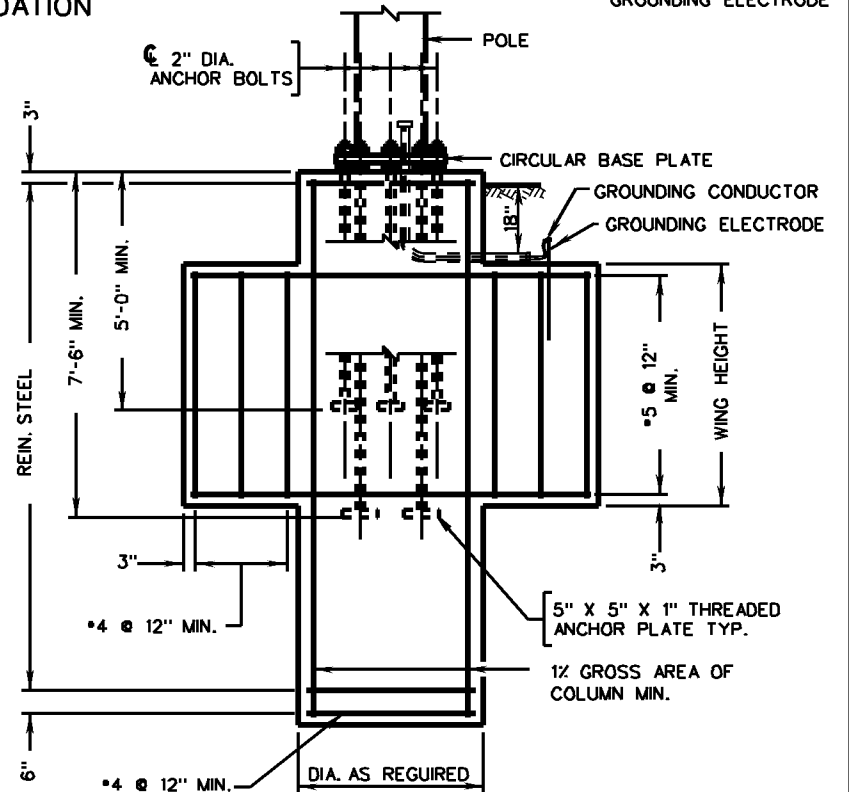
EMPTY CONDUITS SHALL BE PLUGGED TO PREVENT MOISTURE AND RODENT ENTRY.

BELL ENDS SHALL BE INSTALLED ON EACH END OF PVC CONDUITS.

OPEN ENDS OF CONDUITS WITH CONDUCTORS INSTALLED SHALL BE SEALED WITH AN APPROVED SOFT, PLIABLE, AND EASILY REMOVABLE WATERPROOF SEALANT. THE SEALANT SHALL NOT HAVE A DELETERIOUS EFFECT ON CABLE COVERINGS.

NO MORTAR, GROUT, OR CONCRETE SHALL BE PLACED BETWEEN BOTTOM OF BASE PLATE AND TOP OF FOUNDATION.

HEIGHT, WIDTH, AND DEPTH OF FOUNDATION SHALL BE AS REQUIRED BY FOUNDATION DESIGNER



ELEVATION



CAGE REINFORCING STEEL

| | | | | |
|-------------------------|-----|--|--|-------------------------|
| SPECIFICATION REFERENCE | 700 | <h1>SIGNAL POLE FOUNDATION</h1> <h2>INSTALLATION DETAILS</h2> <p>VIRGINIA DEPARTMENT OF TRANSPORTATION</p> | <p>ROAD AND BRIDGE STANDARDS</p> | |
| | | | REVISION DATE NEW 04/09 06/15/2009 | SHEET 1 OF 1 1310.11 |