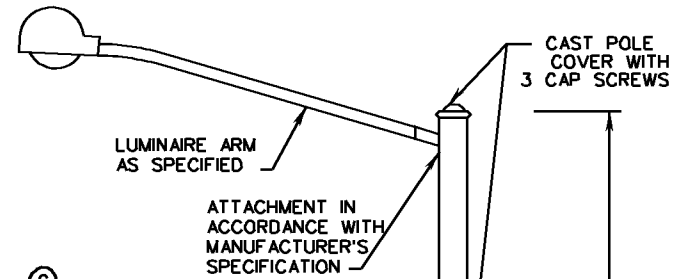
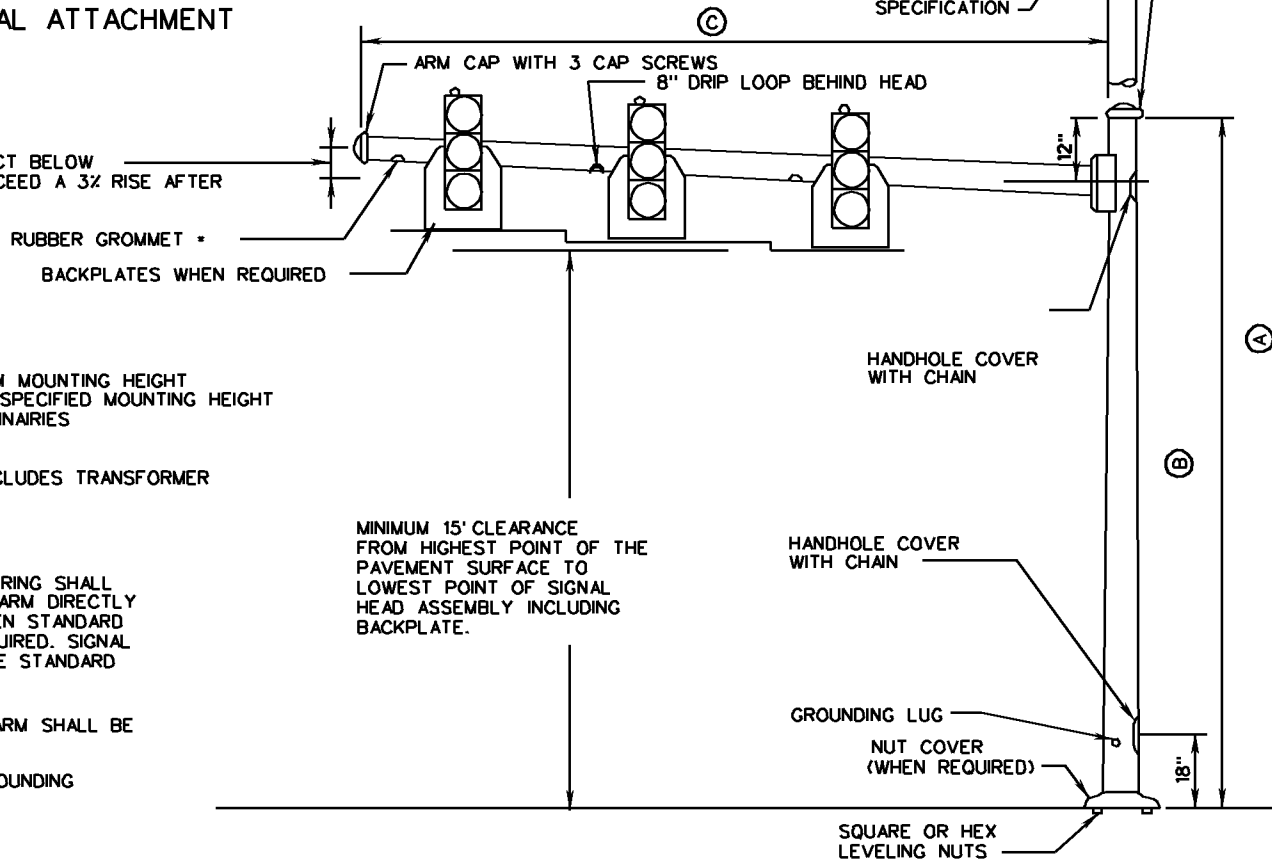


ARM AND SIGNAL ATTACHMENT



END OF ARM SHALL NOT DEFLECT BELOW THE HORIZONTAL PLANE NOR EXCEED A 3% RISE AFTER LOADS ARE APPLIED.



NOTES:

(A) POLE SHAFT LENGTH AND MAST ARM MOUNTING HEIGHT SHALL BE AS REQUIRED TO OBTAIN SPECIFIED MOUNTING HEIGHT OF TRAFFIC SIGNAL HEADS AND LUMINAIRES

(B) AS REQUIRED BY PLANS (HEIGHT INCLUDES TRANSFORMER BASE WHEN REQUIRED).

(C) AS REQUIRED BY PLANS.

* HOLE AND GROMMET FOR SIGNAL WIRING SHALL BE LOCATED ON THE SIDE OF THE ARM DIRECTLY BEHIND THE HANGER ASSEMBLY WHEN STANDARD SM-3 HANGER ASSEMBLIES ARE REQUIRED. SIGNAL WIRING SHALL BE CONCEALED IN THE STANDARD SM-3 HANGER ASSEMBLIES.

THE ALIGNMENT OF THE LUMINAIRE ARM SHALL BE AS SHOWN ON THE PLANS.

REFER TO STANDARD MP-2 FOR GROUNDING LUG DETAIL.

MINIMUM 15' CLEARANCE FROM HIGHEST POINT OF THE PAVEMENT SURFACE TO LOWEST POINT OF SIGNAL HEAD ASSEMBLY INCLUDING BACKPLATE.