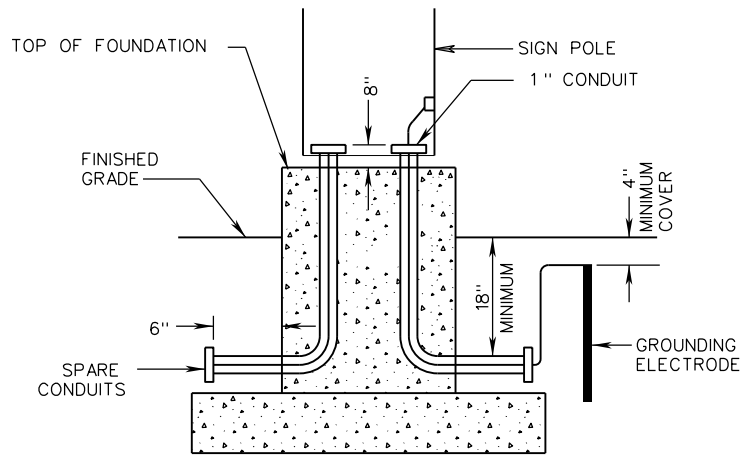
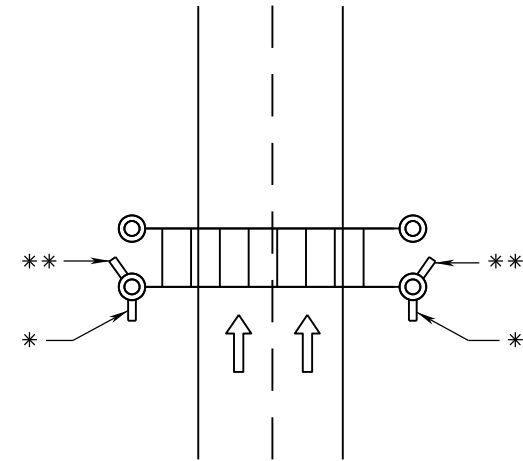


TYPICAL SIGN FOOTING DETAIL WITH CONDUIT



LOCATION OF FUTURE USE CONDUITS FOR DOUBLE END POLE STRUCTURES



NOTES:

THE TYPE, SIZE, NUMBER AND ORIENTATION OF CONDUITS ENTERING AND EXITING FOOTINGS MAY VARY PER SIGN LOCATION.

IN ADDITION TO THE CONDUITS SPECIFIED ON THE PLANS, ONE - 1" CONDUIT REQUIRED FOR GROUND WIRE AND TWO - 2" PVC HEAVY WALL CONDUITS REQUIRED FOR FUTURE USE. FUTURE USE CONDUITS SHALL BE STUBBED OUT AND CAPPED. FUTURE USE CONDUITS SHALL BE ORIENTED TO RUN PARALLEL TO THE ROADWAY. FOR LOCATION OF FUTURE USE CONDUITS IN FOUNDATIONS FOR DOUBLE END POLE STRUCTURES, SEE DRAWING AT RIGHT.

EACH FOUNDATION SHALL BE PERMANENTLY MARKED TO INDICATE ALL SIDES FROM WHICH CONDUITS PASS. THIS MARK SHALL BE MADE WITH A TROWEL WHEN FINISHING THE CONCRETE AND SHALL BE 1/4" DEEP AND 4" TO 6" LONG. LOCATIONS OF EMPTY CONDUITS SHALL HAVE AN ADDITIONAL 2" LONG MARK MADE PERPENDICULAR TO AND CENTERED ON THIS MARK.

FOUNDATIONS ABOVE FINISHED GRADE SHALL BE CHAMFERED 3/4" ON ALL EDGES.

GROUNDING BUSHINGS SHALL BE INSTALLED ON EACH END OF METAL CONDUITS.

BELL ENDS SHALL BE INSTALLED ON EACH END OF PVC CONDUITS.

BELL ENDS & BUSHINGS OF EMPTY CONDUITS SHALL BE PLUGGED TO PREVENT MOISTURE AND RODENT ENTRY.

VOIDS REMAINING AFTER CONDUCTORS EXIT OR ENTER BELL ENDS OR BUSHINGS OF CONDUITS SHALL BE SEALED WITH SILICONE TO PREVENT MOISTURE AND RODENT ENTRY.

NO MORTAR, GROUT, OR CONCRETE SHALL BE PLACED BETWEEN BOTTOM OF BASE PLATE AND TOP OF FOUNDATION.

* FUTURE USE CONDUITS PLACED PARALLEL TO THE ROADWAY

** FUTURE USE CONDUITS PLACED AT AN ANGLE TO MISS THE BACK FOUNDATION OR ANCHOR BOLTS IN A SPREAD FOOTING FOUNDATION.

SPECIFICATION REFERENCE

700

A COPY OF THE ORIGINAL SEALED AND SIGNED STANDARD DRAWING IS ON FILE IN THE CENTRAL OFFICE

OVERHEAD SIGN STRUCTURE

FOUNDATION DETAILS

VIRGINIA DEPARTMENT OF TRANSPORTATION

VDOT

ROAD AND BRIDGE STANDARDS

REVISION DATE

7/13

SHEET 4 OF 7

1324.13