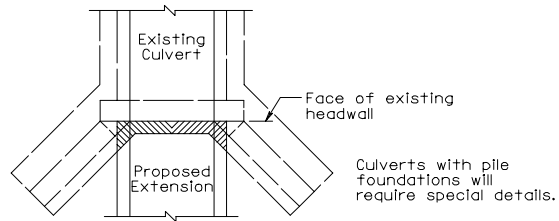
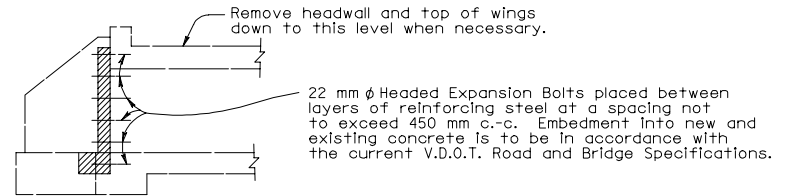
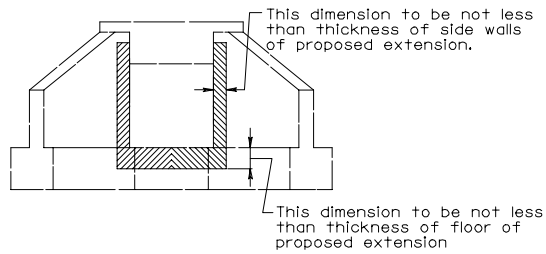


In case of skewed culverts, wingwalls conflicting with barrel of proposed extension are to be removed.



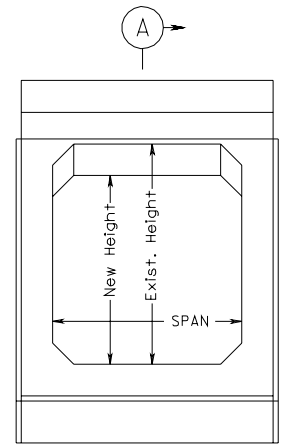
Notes:

Shaded portion indicates existing concrete to be removed, so that all portions of proposed extension will begin in a vertical plane at face of existing headwall.

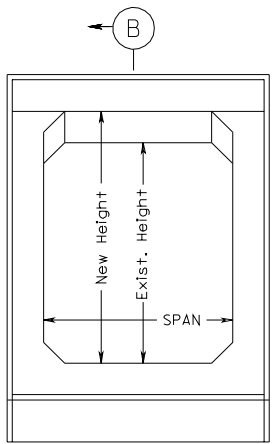
Details of proposed extension including headwall for same can be obtained from box culvert standard.

Unit price bid for concrete and reinforcement shall include cost of removal and disposal of old concrete and the furnishing and placing of dowels and expansion bolts required.

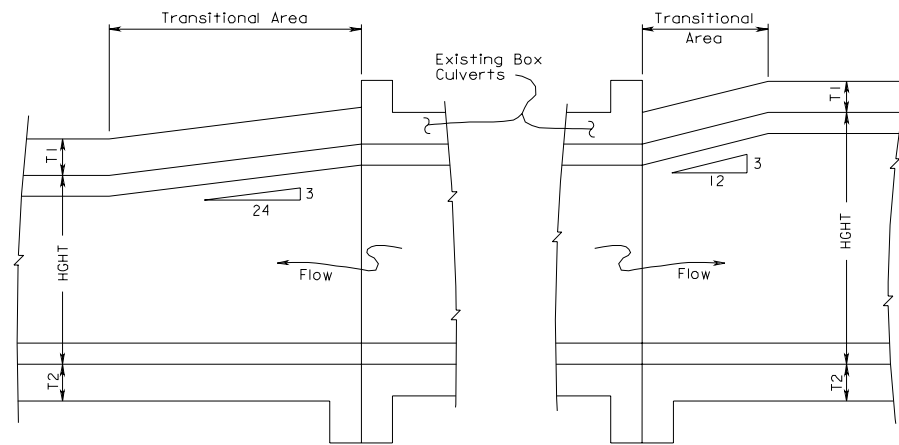
DETAILS FOR WIDENING EXISTING BOX CULVERTS  
MODIFICATIONS TO EXISTING BOX



SECTION A-A  
SECTION THRU CULVERT



SECTION B-B  
SECTION THRU CULVERT



SECTION A-A

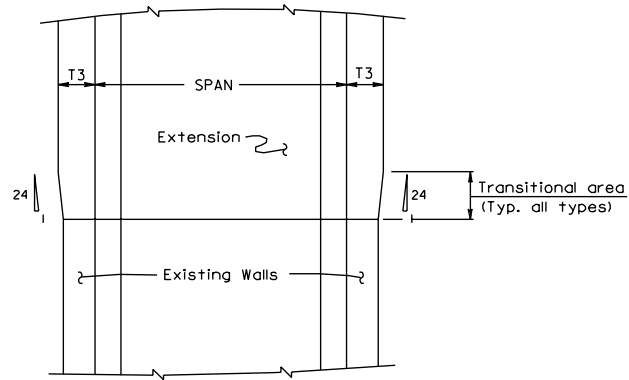
SECTION B-B

Notes:

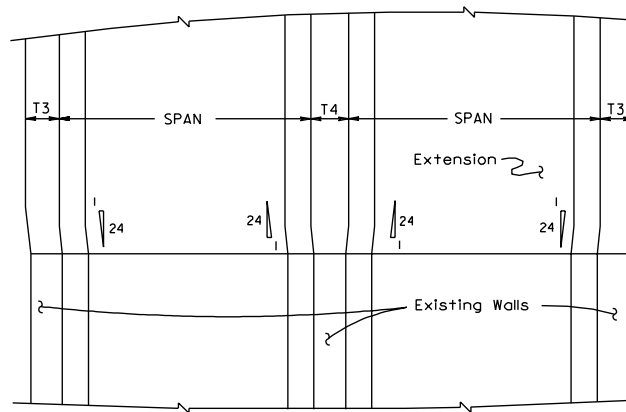
Adjustments in quantities will be required when a change in height exists as shown in Sections A & B. Quantities of concrete and reinforcing steel shall be increased or decreased accordingly. For cases where only wall thickness changes, there shall be no quantity adjustments.

For SPAN, HGHT, & T dimensions, refer to appropriate Box Culvert Standard. This standard is to be used only when a change in height or wall thickness occurs. It does not apply to changes in SPAN.

For SPAN, HGHT, & T dimensions, refer to appropriate Box Culvert Standard. This standard is to be used only when a change in height or wall thickness occurs. It does not apply to changes in SPAN.



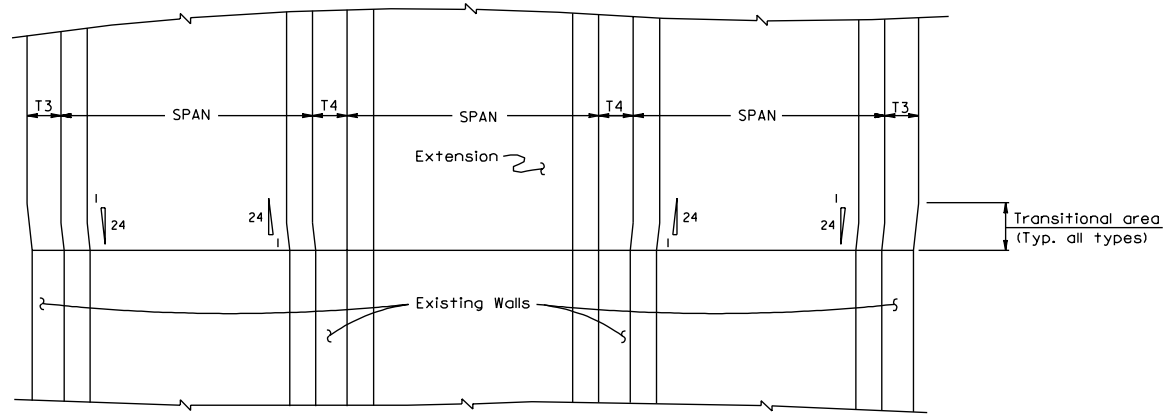
SINGLE BOX CULVERT



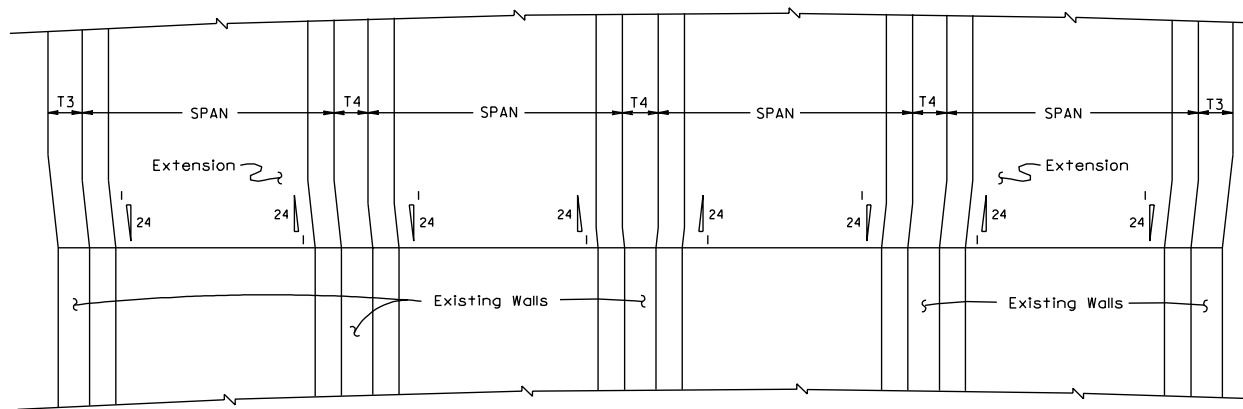
DOUBLE BOX CULVERT

DETAILS FOR WIDENING EXISTING BOX CULVERTS  
WALL TRANSITIONS

For SPAN, HGHT, & T dimensions, refer to appropriate Box Culvert Standard. This standard is to be used only when a change in height or wall thickness occurs. It does not apply to changes in SPAN.



TRIPLE BOX CULVERT



QUADRUPLE BOX CULVERT