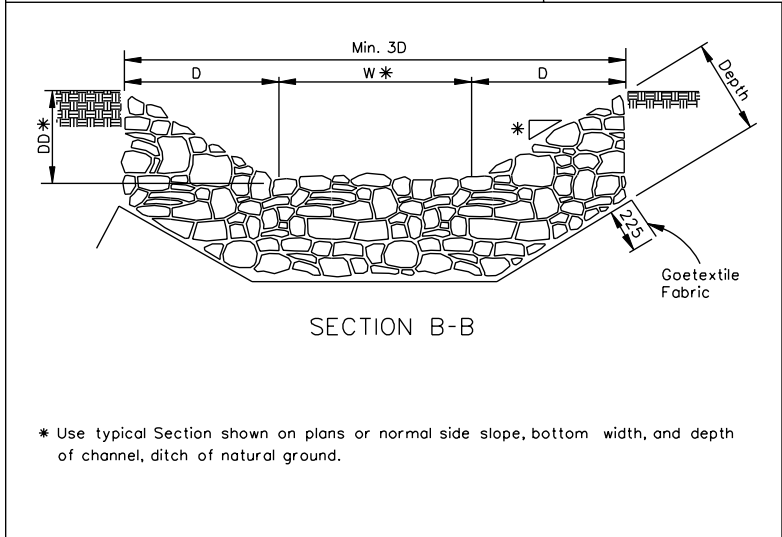
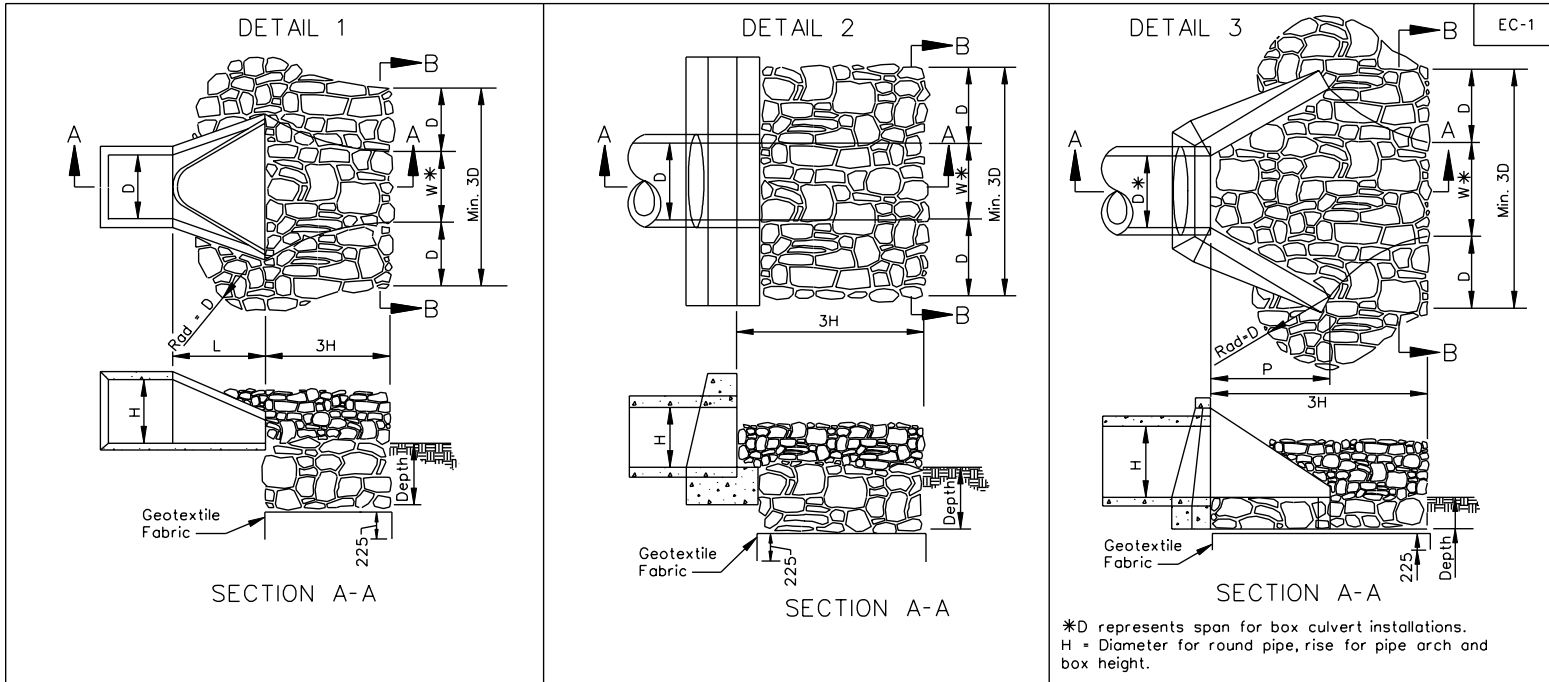


REVISED ON 2/01



Notes:

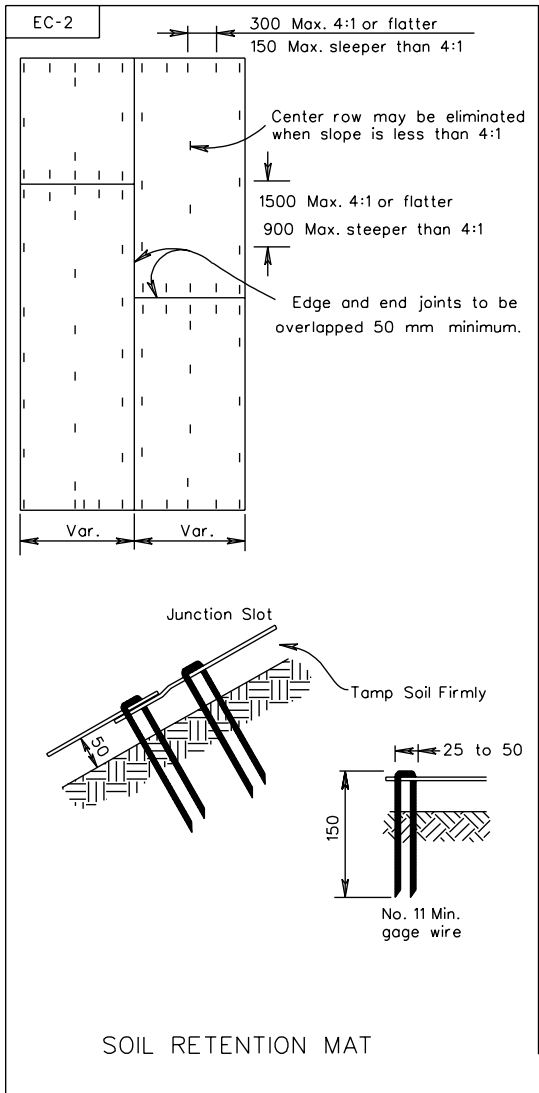
For multiple line installations Dimension D is to govern the protection outside the channel width (W).

On any Secondary Roads installation requiring erosion control stone where no endwall or endsection is specified on plans, construction is to be in accordance with Detail 2 shown above.

Geotextile Fabric to be installed under all erosion control stone in accordance with the specifications.

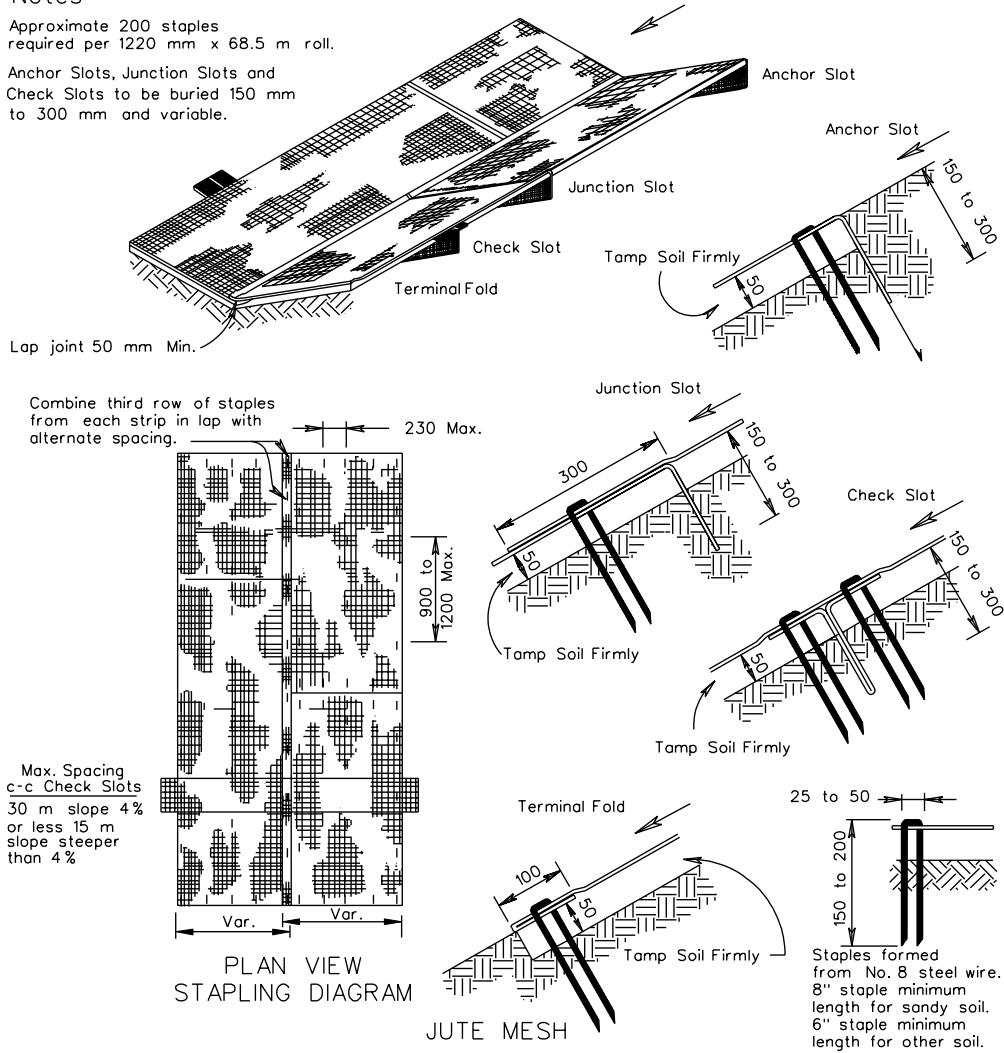
Dry Rip Rap	Min. Depth Rip Rap
Class I	600
Class II	900

REVISED ON 2/01



Notes:

Approximate 200 staples required per 1220 mm x 68.5 m roll.  
Anchor Slots, Junction Slots and Check Slots to be buried 150 mm to 300 mm and variable.



General Notes:

Basis of payment to be square meters of protective covering complete in place. Protective covering is to be located as indicated on the plans in accordance with the dimensions specified on typical section.  
"T-Top" staples or other manufacturer's design approved by the Engineer may be substituted for the staples shown.

Jute Mesh or Soil Retention Mat in accordance with the Specifications may be used at the option of the contractor.  
Width of material may vary from minimum dimension by increments of 1220 or 1525 mm.

PROTECTIVE COVERING INSTALLATION CRITERIA

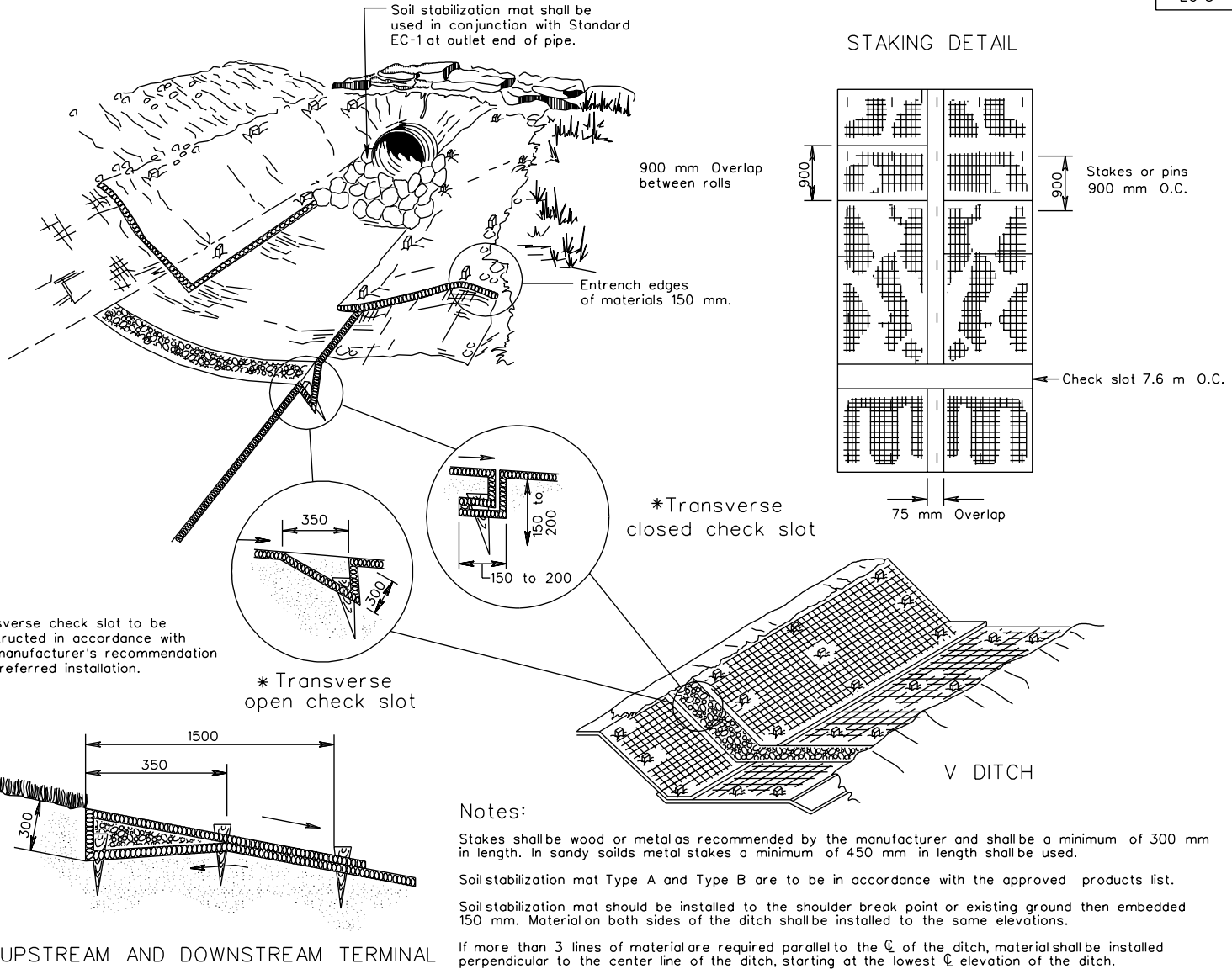
114.02 UNLESS OTHERWISE NOTED, ALL DIMENSIONS ON THIS SHEET ARE IN MILLIMETERS

VIRGINIA DEPARTMENT OF TRANSPORTATION

SPECIFICATION REFERENCE
244 606

REVISED ON 2/01

EC-3



Sheet 1 of 2

SPECIFICATION REFERENCE
606 244

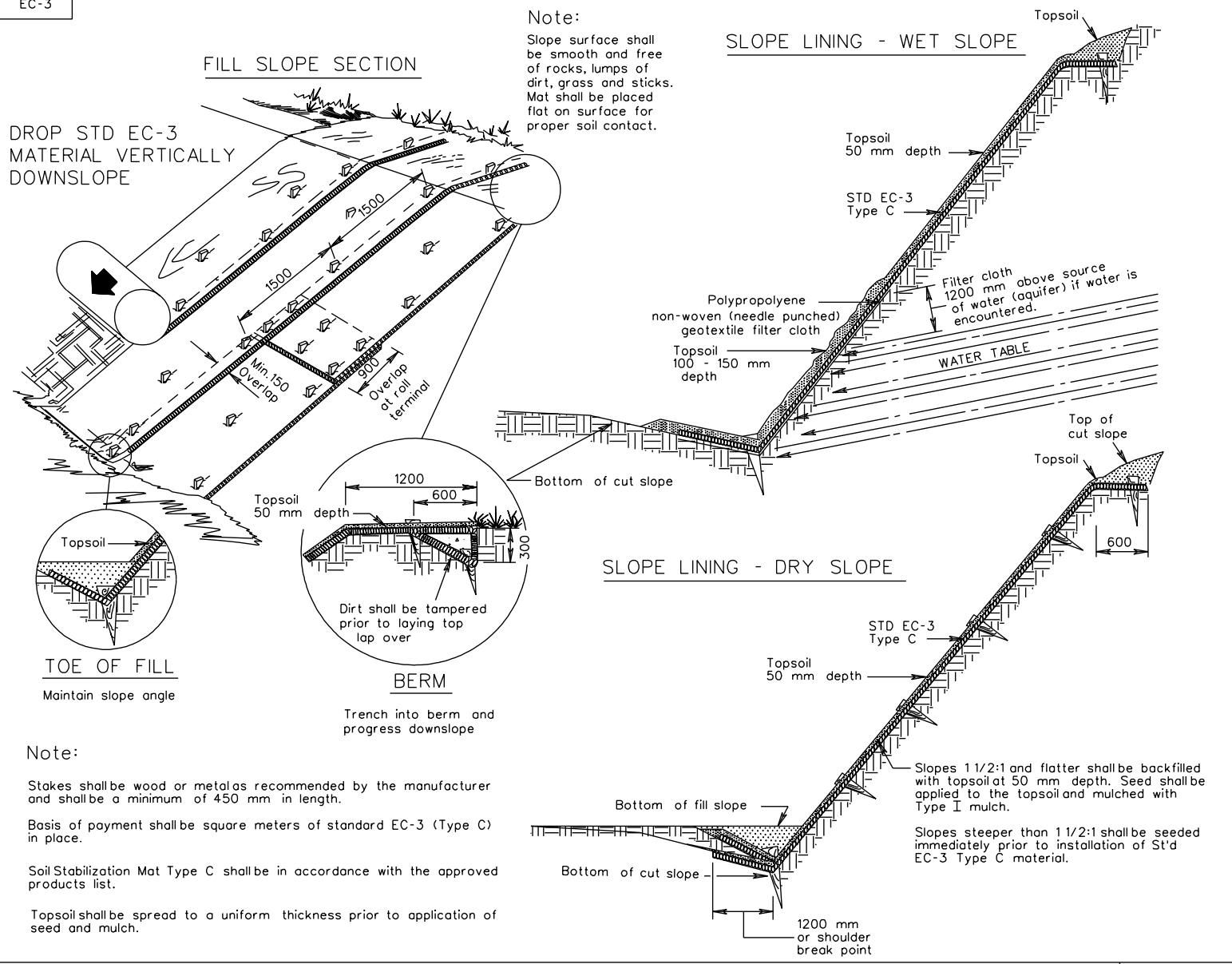
## SOIL STABILIZATION MAT DITCH INSTALLATION TYPE A OR B

VIRGINIA DEPARTMENT OF TRANSPORTATION

UNLESS OTHERWISE NOTED, ALL DIMENSIONS ON THIS SHEET ARE IN MILLIMETERS 114.03

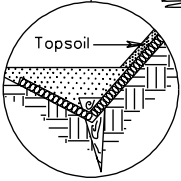
REVISED ON 2/01

EC-3

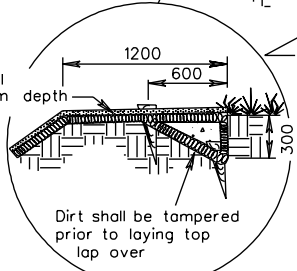


Note:  
Slope surface shall be smooth and free of rocks, lumps of dirt, grass and sticks. Mat shall be placed flat on surface for proper soil contact.

DROP STD EC-3 MATERIAL VERTICALLY DOWNSLOPE



**TOE OF FILL**  
Maintain slope angle



**BERM**

Trench into berm and progress downslope

Note:

- Stakes shall be wood or metals recommended by the manufacturer and shall be a minimum of 450 mm in length.
- Basis of payment shall be square meters of standard EC-3 (Type C) in place.
- Soil Stabilization Mat Type C shall be in accordance with the approved products list.
- Topsoil shall be spread to a uniform thickness prior to application of seed and mulch.

Slopes 1 1/2:1 and flatter shall be backfilled with topsoil at 50 mm depth. Seed shall be applied to the topsoil and mulched with Type I mulch.

Slopes steeper than 1 1/2:1 shall be seeded immediately prior to installation of Std EC-3 Type C material.

Sheet 2 of 2

SOIL STABILIZATION MAT - SLOPE INSTALLATION TYPE C

SPECIFICATION REFERENCE

244  
606

114.04 UNLESS OTHERWISE NOTED, ALL DIMENSIONS ON THIS SHEET ARE IN MILLIMETERS

VIRGINIA DEPARTMENT OF TRANSPORTATION