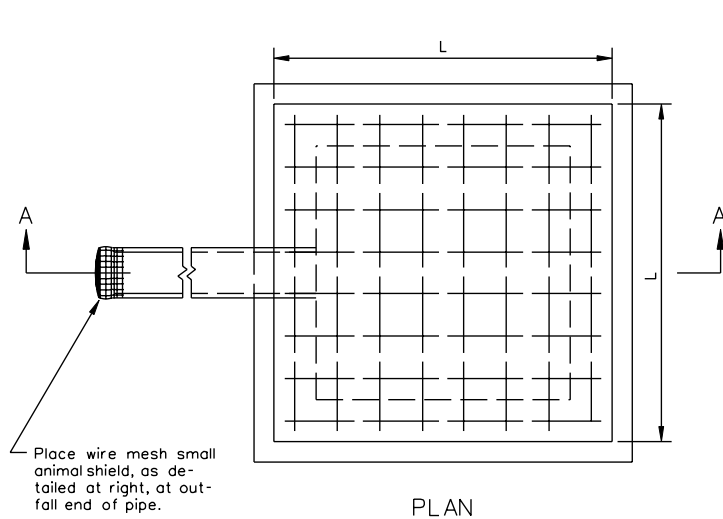
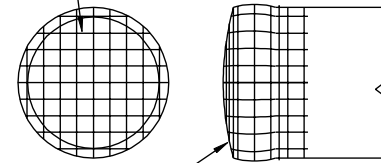


REVISED ON 7/01 REVISED ON 3/03

SB-1



19 mm x 19 mm Mesh, Min. 1.2 mm, Galvanized After Weaving, Hardware Cloth.



Crimp around outlet end of pipe and secure to pipe with galvanized steel wire.

Notes:

All concrete to be Class 20 if cast in place. For precast see Sheet 110.02.

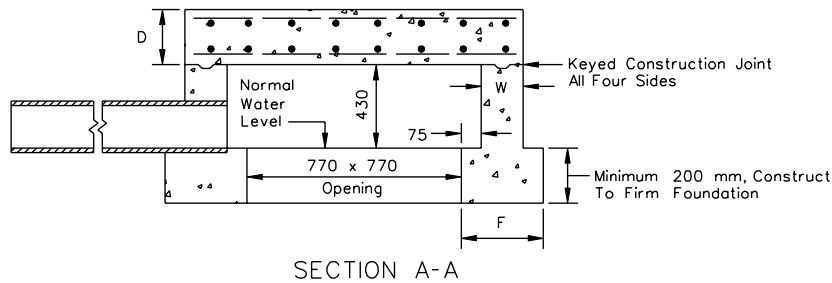
Concrete quantities shown are based on a 150 mm concrete sewer pipe. If other size or type of pipe is used quantities are to be adjusted accordingly.

Cost of wire mesh shield at outfall end of pipe is to be included in price bid for pipe.

This item may be precast or cast in place.

HEIGHT OF FILL	SIZE (L)	TOP SLAB (D)	SIDEWALLS (W)	FOOTING WIDTH (F)	REINFORCING STEEL				QUANTITIES		
					NO. REQ'D.	LENGTH	SIZE	SPACING C-C	m ³ CONC.	REINF. STEEL kg	INCREMENT * m ³
BELOW 7.6 m	1220	200	150	300	32	1145	#13	150	0.96	36	0.03
7.6 - 15.2 m	1320	200	200	350	32	1245	#16	150	1.11	62	0.04

* Quantities shown are based on a 200 mm depth of footing, add incremental quantity for each additional 25 mm of depth.



STANDARD SPRING BOX

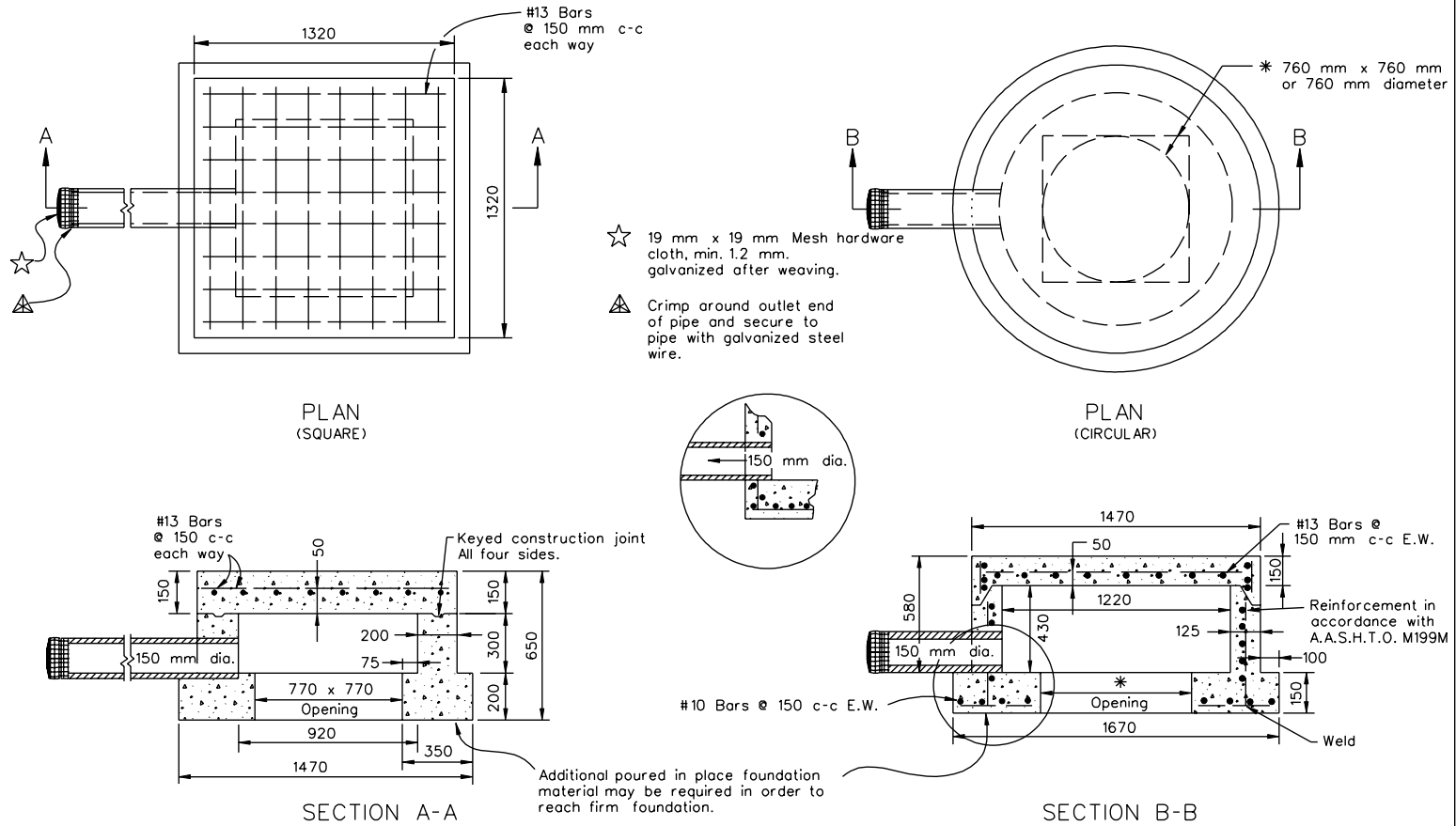
VIRGINIA DEPARTMENT OF TRANSPORTATION

110.01

UNLESS OTHERWISE NOTED, ALL DIMENSIONS ON THIS SHEET ARE IN MILLIMETERS

SPECIFICATION REFERENCE

105
232
302



Notes:

Concrete to be 30 MPa minimum
compressive strength.

Reinforcing steel in accordance with
A.S.T.M. A-615M (Reinforcing Bars).

Pipe opening as required 100 mm min.
200 mm max. larger than O.D. pipe.

Dimensions shown are minimum. Actual
measurements may vary with manufacturer's
tolerances.

SPECIFICATION REFERENCE	<h2 style="margin: 0;">PRECAST SPRING BOX</h2> <p style="margin: 0;">VIRGINIA DEPARTMENT OF TRANSPORTATION</p>		<p style="margin: 0; font-size: small;">UNLESS OTHERWISE NOTED, ALL DIMENSIONS ON THIS SHEET ARE IN MILLIMETERS</p>
105			110.02