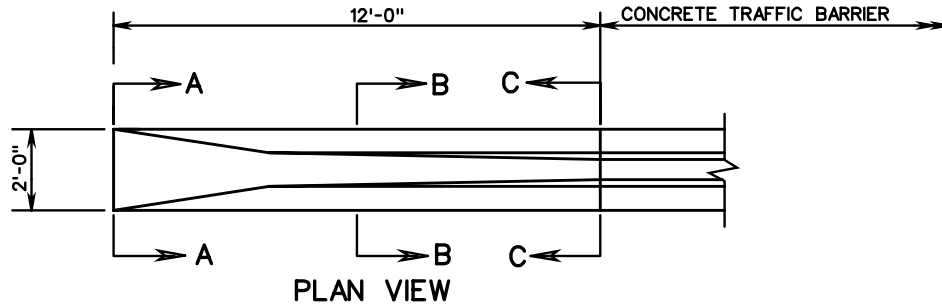
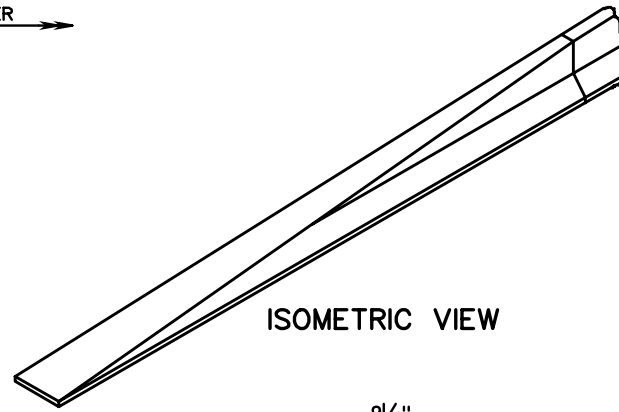


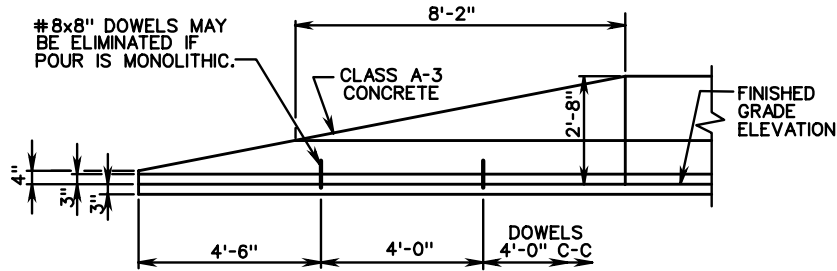
MB-9A



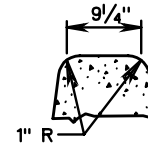
PLAN VIEW



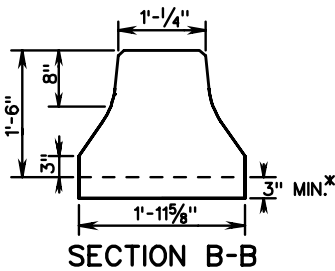
ISOMETRIC VIEW



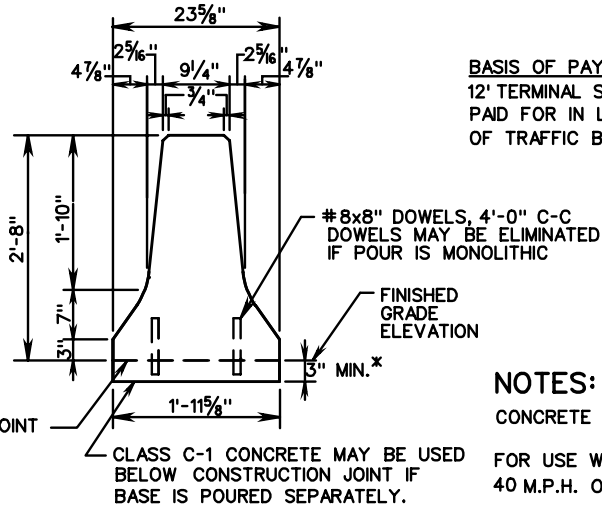
ELEVATION VIEW



ALTERNATE TOP



SECTION B-B



SECTION C-C

BASIS OF PAYMENT: CONCRETE MEDIAN BARRIER 12' TERMINAL SECTION IS TO BE MEASURED AND PAID FOR IN LIN. FT. ST'D. MB-7D, OR LIN. FT. OF TRAFFIC BARRIER SERVICE CONCRETE.

NOTES:

CONCRETE TO BE CLASS A3.

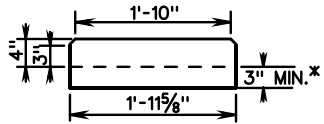
FOR USE WHERE THE OPERATING SPEED IS 40 M.P.H. OR LESS.

LOCATION OF THE BARRIER END SECTIONS TO BE AS NOTED ON PLANS OR AS APPROVED BY THE ENGINEER.

FOR POSITIVE CONNECTION DETAILS AND DIMENSIONS SEE STANDARD MB-INS.

ONLY FOR USE OUTSIDE OF CLEAR ZONE.

* DEPTH OF CONCRETE BASE MAY BE EXTENDED AT THE CONTRACTOR'S OPTION TO COINCIDE WITH BOTTOM OF PAVEMENT COURSE IN WHICH BASE TERMINATES; HOWEVER, THE COST OF ADDITIONAL CONCRETE SHALL BE INCLUDED IN UNIT PRICE BID PER LIN. FT. OF BARRIER.



SECTION A-A

OPTIONAL CONSTRUCTION JOINT

CLASS C-1 CONCRETE MAY BE USED BELOW CONSTRUCTION JOINT IF BASE IS POURED SEPARATELY.



ROAD AND BRIDGE STANDARDS

SHEET 1 OF 1

REVISION DATE

502.09

CAST IN PLACE CONCRETE MEDIAN BARRIER
12 FT. TERMINAL SECTION

VIRGINIA DEPARTMENT OF TRANSPORTATION

SPECIFICATION REFERENCE